

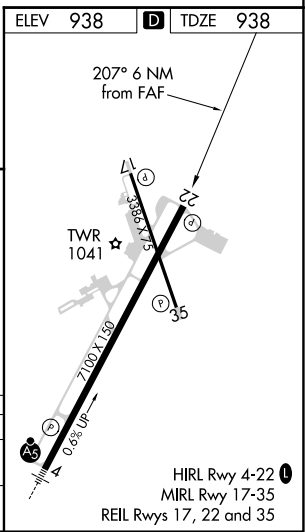
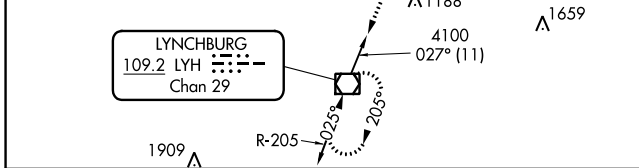
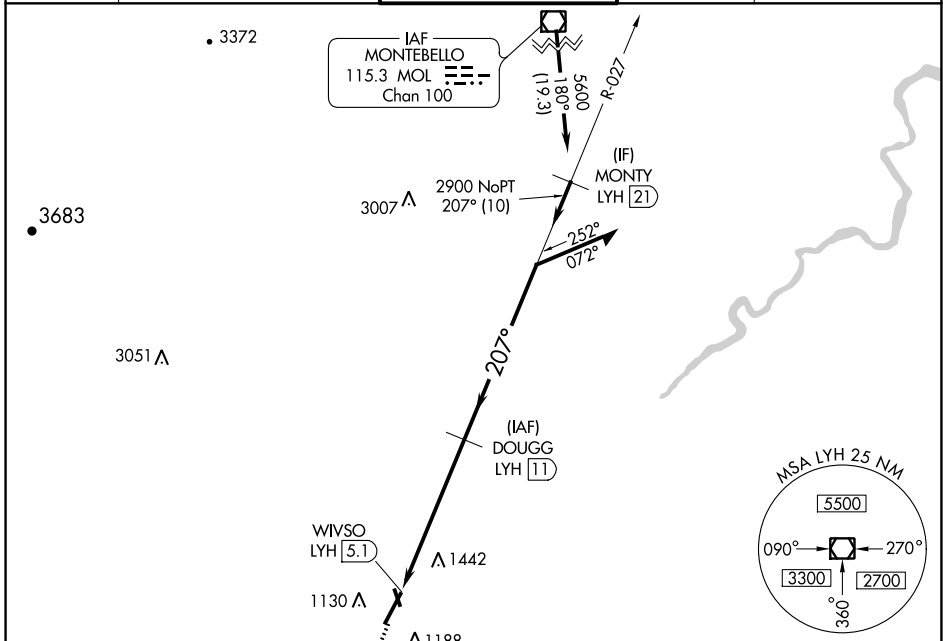
VOR/DME LYH	APP CRS	Rwy Idg	<b>7100</b>
<b>109.2</b>	<b>207°</b>	TDZE	<b>938</b>
Chan <b>29</b>		Apt Elev	<b>938</b>

# VOR RWY 22

LYNCHBURG RGNL/PRESTON GLENN FLD (LYH)

DME required.		LYNCHBURG TOWER ★		GND CON	UNICOM
<p>▼ Rwy 22 helicopter visibility reduction below ¾ SM NA.                  ▲ Circling Rwy 17 NA at night.</p>		<p><b>127.65</b> (CTAF) <b>0 257.8</b></p>		<b>121.9</b>	<b>122.95</b>

ATIS	ROANOKE APP CON	LYNCHBURG TOWER ★	GND CON	UNICOM
<b>119.8</b>	<b>135.0 254.325</b>	<b>127.65</b> (CTAF) <b>0 257.8</b>	<b>121.9</b>	<b>122.95</b>



2900	LYH		Remain within 10 NM
↑	☐		
WIVSO LYH (5.1)		DOUGG LYH (11)	
1130 AGL		4100	
205°		027°	
3.02°		207°	
TCH 39		2900	
0.1		5.9 NM	
VGSi and descent angles not coincident (VGSi Angle 3.00/TCH 45).			

CATEGORY	A	B	C	D
S-22	1740-1 802 (900-1)	1740-1¼ 802 (900-1¼)	1740-2¼ 802 (900-2¼)	1740-2½ 802 (900-2½)
CIRCLING	1740-1 802 (900-1)	1780-1¼ 842 (900-1¼)	1800-2½ 862 (900-2½)	1800-2¾ 862 (900-2¾)

# VOR RWY 22

HIRL Rwy 4-22  
MIRL Rwy 17-35  
REIL Rws 17, 22 and 35

NE-3, 23 MAR 2023 to 20 APR 2023

NE-3, 23 MAR 2023 to 20 APR 2023