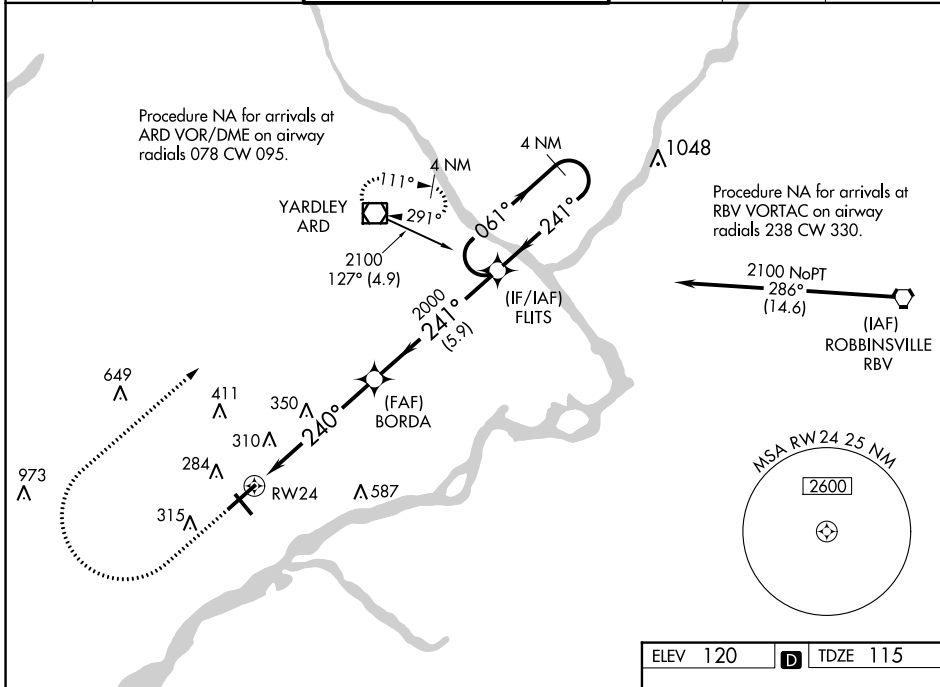


WAAS CH 45504 W24A	APP CRS 240°	Rwy Idg TDZE Apt Elev	6102 115 120
--	------------------------	-----------------------------	---

RNAV (GPS) RWY 24

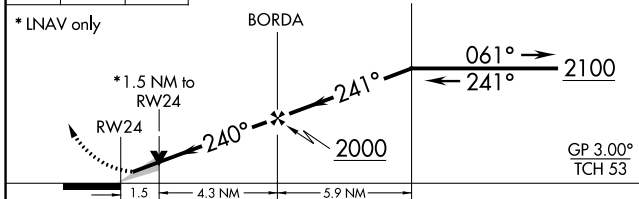
NORtheast PHILADELPHIA (PNE)

<p>For uncompensated Baro-VNAV systems, LNAV/VNAV NA below -1°C (11°F) or above 54°C (130°F). DME/DME RNP-0.3 NA.</p>	<p>MALS R</p>	<p>MISSED APPROACH: Climb to 900 then climbing right turn to 3000 direct ARD VOR/DME and hold.</p>			
		<p>ATIS 121.15</p>	<p>PHILADELPHIA APP CON 123.8 291.7</p>	<p>NORtheast PHILADELPHIA TOWER ★ 126.9 (CTAF) 278.8</p>	<p>GND CON 121.7</p>



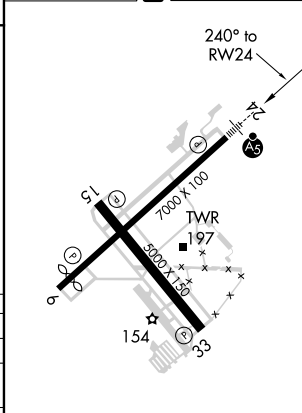
NE-4, 23 MAR 2023 to 20 APR 2023

NE-4, 23 MAR 2023 to 20 APR 2023



CATEGORY	A	B	C	D
LPV DA		315-½	200 (200-½)	
LNAV/VNAV DA		560-⅞	445 (500-⅞)	
LNAV MDA	640-½	525 (600-½)	640-1	525 (600-1)
CIRCLING	700-1	580 (600-1)	720-1½ 600 (600-1½)	780-2 660 (700-2)

ELEV 120	D	TDZE 115
----------	---	----------



HIRL Rwy 6-24
MIRL Rwy 15-33
REIL Rwy 6, 15 and 33