

WAAS CH <b>69327</b> <b>W33A</b>	APP CRS <b>333°</b>	Rwy Idg TDZE Apt Elev	<b>5000</b> <b>108</b> <b>120</b>
--	------------------------	-----------------------------	---

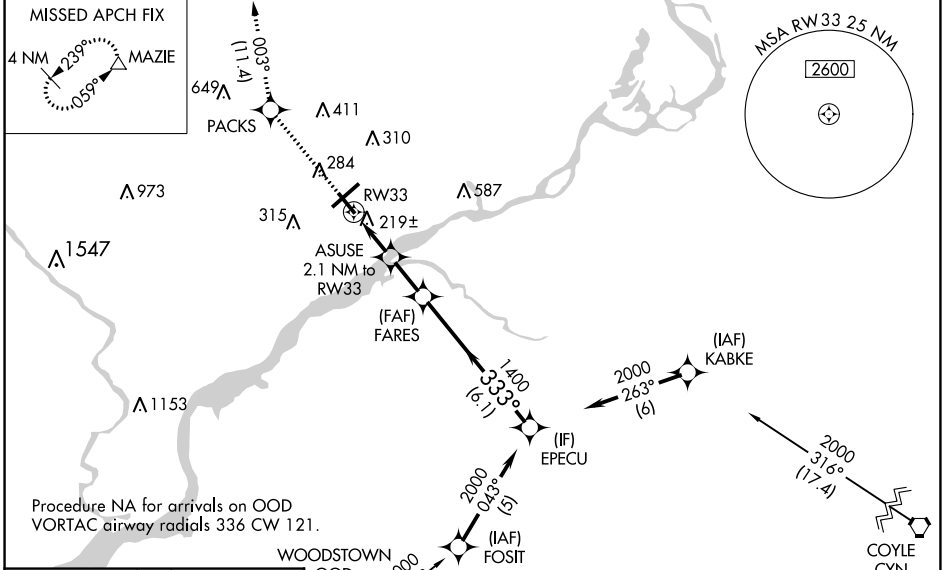
# RNAV (GPS) RWY 33

NORTHEAST PHILADELPHIA (PNE)

**⚠** Baro-VNAV NA when using Philadelphia Intl altimeter setting. For uncompensated Baro-VNAV systems, LNAV/VNAV NA below -15°C (5°F) or above 43°C (109°F). When local altimeter setting not received, use Philadelphia Intl altimeter setting: increase LPV DA to 430 feet and LNAV/VNAV DA to 450 feet and all LPV and LNAV/VNAV visibilities ½ SM; increase all MDAs 60 feet and LNAV visibility Cat C/D ¼ SM and Circling visibility Cat C/D ¼ SM. DME/DME RNP-0.3 NA.

**MISSED APPROACH:**  
Climb to 2500 direct  
PACKS and on track  
003° to MAZIE and hold.

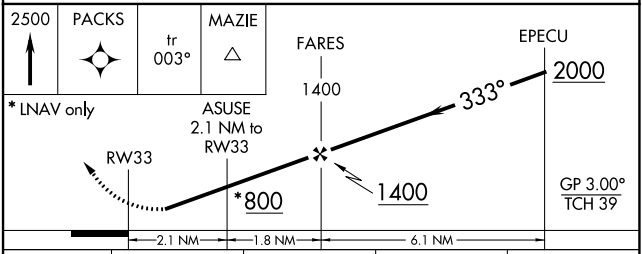
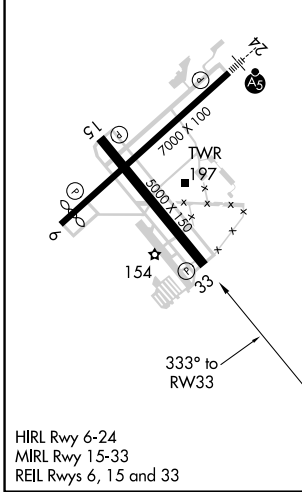
ATIS <b>121.15</b>	PHILADELPHIA APP CON <b>123.8 291.7</b>	NORTHEAST PHILADELPHIA TOWER * <b>126.9 (CTAF) 0 278.8</b>	GND CON <b>121.7</b>	CLNC DEL <b>127.25</b>	UNICOM <b>122.95</b>
-----------------------	--	---	-------------------------	---------------------------	-------------------------



NE-4, 23 MAR 2023 to 20 APR 2023

NE-4, 23 MAR 2023 to 20 APR 2023

ELEV 120	<b>D</b>	TDZE 108
----------	----------	----------



CATEGORY	A	B	C	D
LPV DA		380-1	272 (300-1)	
LNAV/VNAV DA		400-1	292 (300-1)	
LNAV MDA		480-1	372 (400-1)	
CIRCLING	700-1	580 (600-1)	720-1½ 600 (600-1½)	780-2 660 (700-2)