

RNAV (RNP) Z RWY 10C

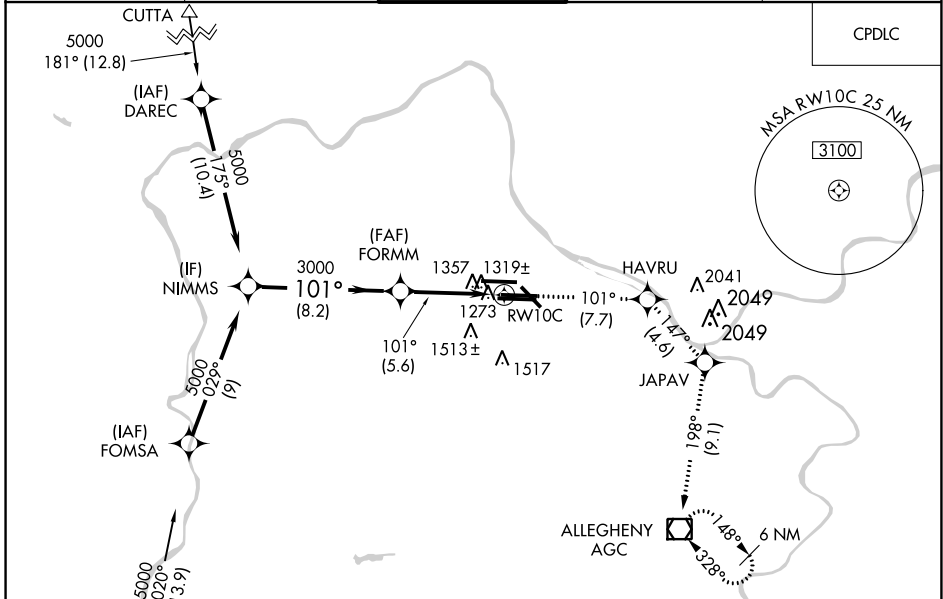
PITTSBURGH INTL (PIT')

APP CRS	Rwy Idg	9708
101°	TDZE	1141
	Apt Elev	1203

▼ For uncompensated Baro-VNAV systems, procedure NA below -17°C (1°F) or above 46°C (116°F). GPS Required. Simultaneous approach authorized with ILS or LOC Rwy 10L, ILS Rwy 10L (Cat II), ILS Rwy 10L (Cat III). Use of FD or AP providing RNAV track guidance required during simultaneous operations.

MISSED APPROACH: Climb to 4000 on track 101° to HAVRU and on track 147° to JAPAV and on track 198° to AGC VOR/DME and hold.

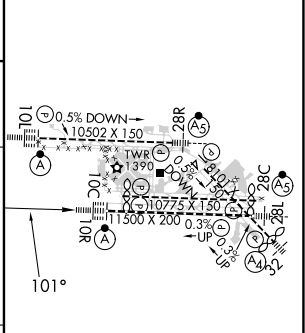
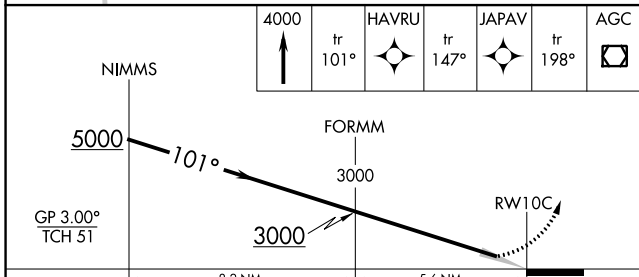
D-ATIS	PITTSBURGH APP CON	PITTSBURGH TOWER	GND CON	CLNC DEL
ARR 127.25	123.95 360.8	128.3 291.7	SOUTH 121.9 348.6	126.75 353.7
DEP 135.9			NORTH 127.8 348.6	



NE-4, 23 MAR 2023 to 20 APR 2023

NE-4, 23 MAR 2023 to 20 APR 2023

ELEV 1203	D	TDZE 1141
-----------	----------	-----------



CATEGORY	A	B	C	D
RNP 0.11 DA		1540-1½	399 (400-1½)	
RNP 0.20 DA		1566-1½	425 (400-1½)	
RNP 0.30 DA		1669-1¾	528 (500-1¾)	

AUTHORIZATION REQUIRED

REIL Rwy 10C
HIRL all Rwys
TDZ/CL Rwys 10L, 10R, 28L, 28R, 28C, and 32