

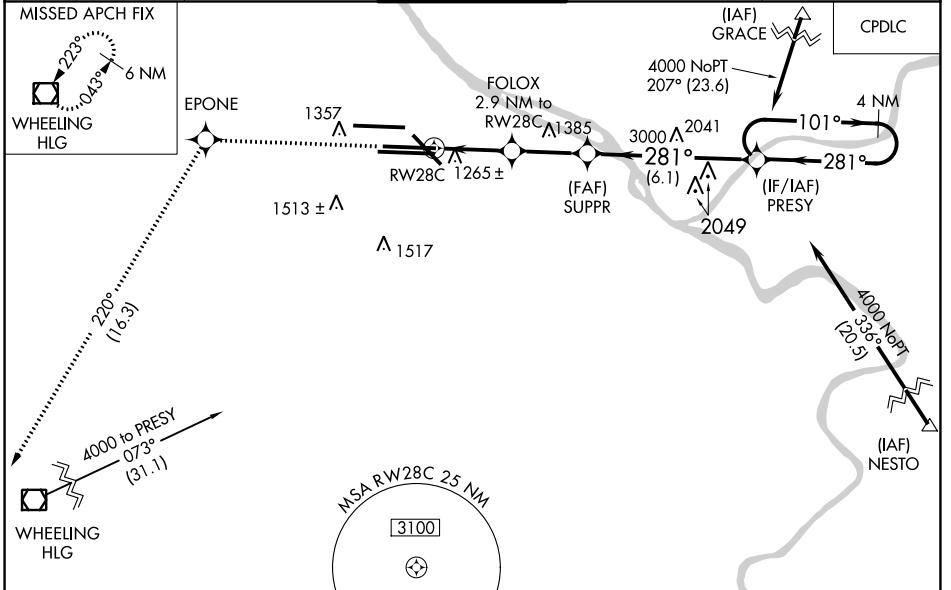
WAAS CH <b>45527</b> <b>W28A</b>	APP CRS <b>281°</b>	Rwy Idg TDZE Apt Elev	<b>9708</b> <b>1134</b> <b>1203</b>
--	------------------------	-----------------------------	---

# RNAV (GPS) Y RWY 28C

PITTSBURGH INTL (PIT)

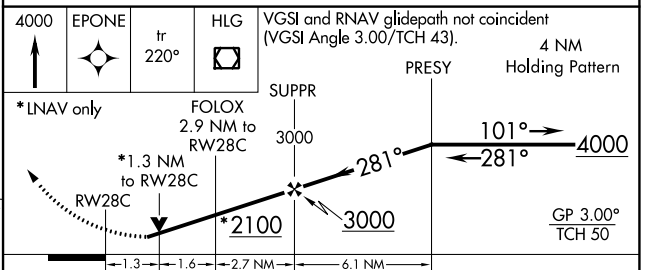
RNP APCH.	MISSED APPROACH:
<p>▼ For uncompensated Baro-VNAV systems, LNAV/VNAV NA below -17°C (2°F) or above 54°C (130°F).</p> <p>▲ Rwy 28C helicopter visibility reduction below RVR 4000 NA. Simultaneous approach authorized with ILS or LOC Rwy 28R, ILS Rwy 28R (Cat II). LNAV procedure NA during simultaneous operations. Use of FD or AP providing RNAV track guidance required during simultaneous operations.</p>	<p>Climb to 4000 direct EPONE and on track 220° to HLG VOR/DME and hold.</p>

D-ATIS ARR <b>127.25</b> DEP <b>135.9</b>	PITTSBURGH APP CON <b>123.95 360.8</b>	PITTSBURGH TOWER <b>128.3 291.7</b>	GND CON SOUTH <b>121.9 348.6</b> NORTH <b>127.8 348.6</b>	CLNC DEL <b>126.75 353.7</b>
---	---	--	---	---------------------------------



ELEV <b>1203</b>	<b>D</b>	TDZE <b>1134</b>
------------------	----------	------------------

REIL Rwy 10C  
HIRL all Rwy's  
TDZ/CL Rwy's 10L, 10R, 28L, 28R,  
28C, and 32



CATEGORY	A	B	C	D
LPV DA		1471/60	337 (300-1¼)	
LNAV/VNAV DA		1545-1½	411 (400-1½)	
LNAV MDA	1580/55	446 (400-1)	1580-1¾ 446 (400-1¾)	1580-1½ 446 (400-1½)
<input checked="" type="checkbox"/> CIRCLING	1700-1	497 (500-1)	1880-2 677 (700-2)	1880-2¼ 677 (700-2¼)

NE-4, 23 MAR 2023 to 20 APR 2023

NE-4, 23 MAR 2023 to 20 APR 2023