

WAAS CH <b>97326</b> <b>W28B</b>	APP CRS <b>281°</b>	Rwy Idg TDZE Apt Elev	<b>11500</b> <b>1125</b> <b>1203</b>
--	------------------------	-----------------------------	--

# RNAV (GPS) Y RWY 28L

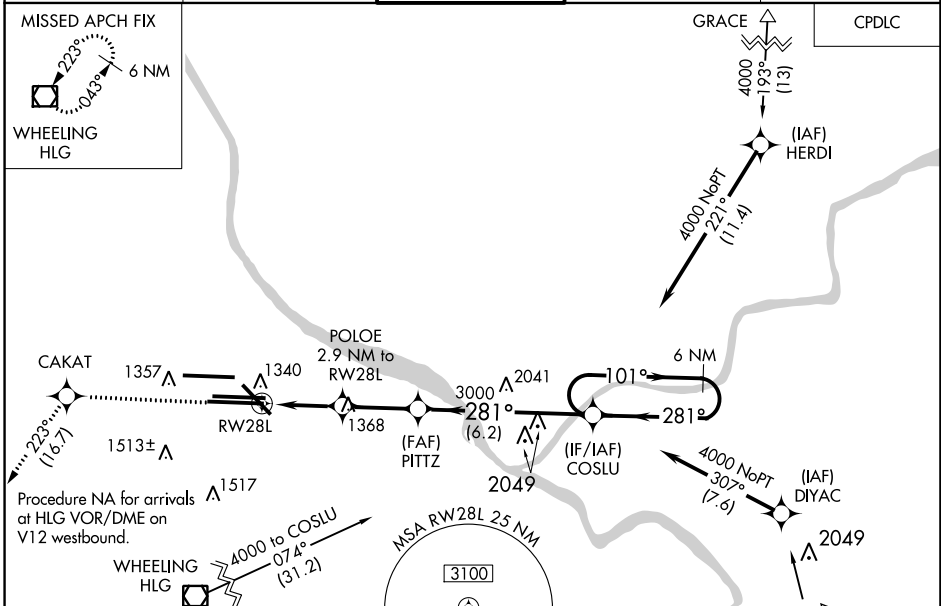
PITTSBURGH INTL (PIT)

**⚠** For uncompensated Baro-VNAV systems, LNAV/VNAV NA below -18°C (0°F) or above 54°C (130°F). DME/DME RNP-0.3 NA. For inop ALS, increase LNAV Cats C/D visibility to 1½ SM. LNAV procedure NA during simultaneous operations. Use of FD or AP required during simultaneous operations.

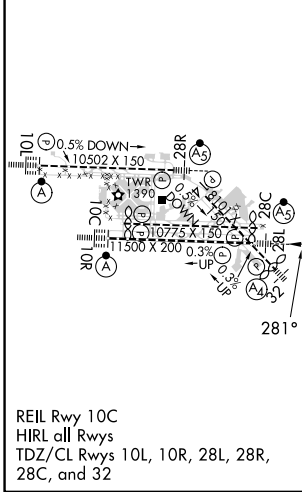
**MALSR**

**MISSED APPROACH:**  
Climb to 4000 direct CAKAT and on track 223° to HLG VOR/DME and hold.

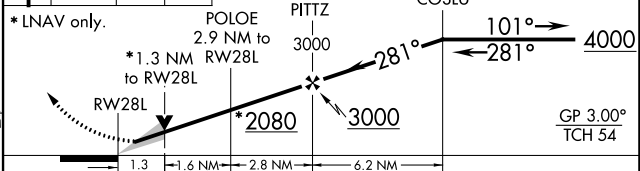
D-ATIS ARR <b>127.25</b> DEP <b>135.9</b>	PITTSBURGH APP CON <b>123.95 360.8</b>	PITTSBURGH TOWER <b>128.3 291.7</b>	GND CON SOUTH <b>121.9 348.6</b> NORTH <b>127.8 348.6</b>	CLNC DEL <b>126.75 353.7</b>
---	---	--	---	---------------------------------



ELEV <b>1203</b>	<b>D</b>	TDZE <b>1125</b>
------------------	----------	------------------



4000 CAKAT tr 223° HLG VGSi and RNAV glidepath not coincident (VGSi Angle 3.00/TCH 70). 6 NM Holding Pattern



CATEGORY	A	B	C	D
LPV DA		1325/18	200 (200-½)	
LNAV/VNAV DA		1549/40	424 (400-¾)	
LNAV MDA	1600/24	475 (400-½)	1600/50	475 (400-1)
<b>C</b> CIRCLING	1700-1	497 (500-1)	1880-2 677 (700-2)	1880-2¼ 677 (700-2¼)

NE-4, 23 MAR 2023 to 20 APR 2023

NE-4, 23 MAR 2023 to 20 APR 2023