

WAAS CH 70411 W18B	APP CRS 177°	Rwy Idg 7019 TDZE 128 Apt Elev 131
--	------------------------	---

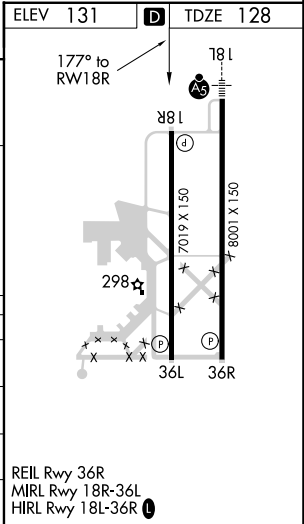
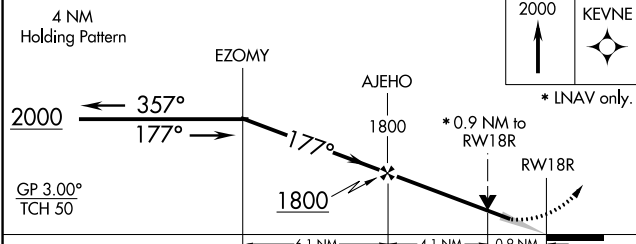
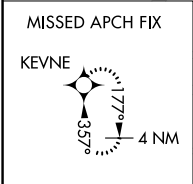
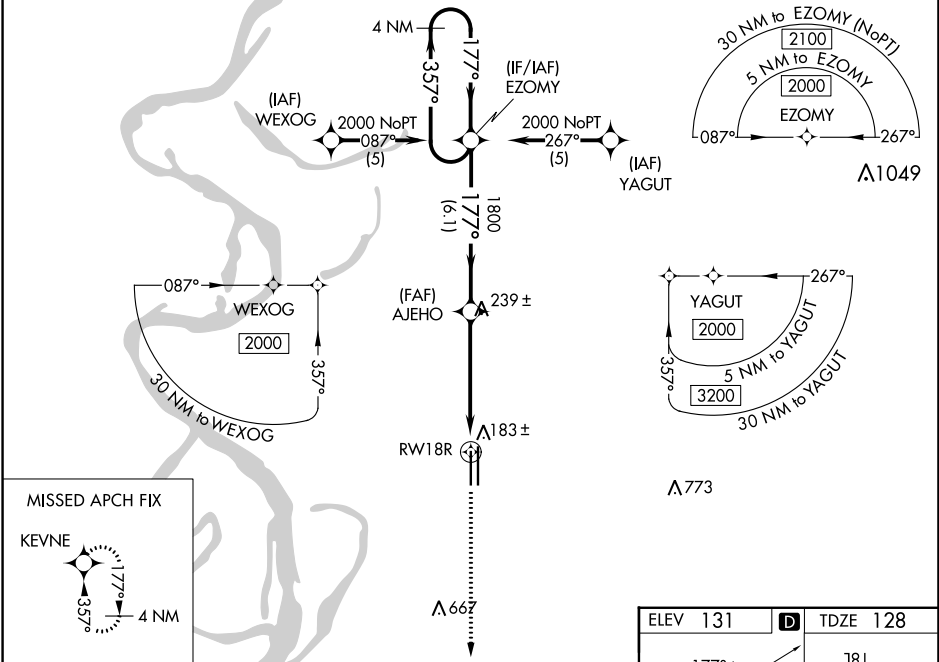
RNAV (GPS) RWY 18R

GREENVILLE MID-DELTA (GLH)

⚠ For uncompensated Baro-VNAV systems, LNAV/VNAV NA below -15°C (5°F) or above 54°C (130°F).
⚠ DME/DME RNP-0.3 NA. When local altimeter setting not received, use Greenwood altimeter setting:
 increase LPV DA to 486 feet and all Cats visibility ¼ SM; increase LNAV/VNAV DA to 554 feet and all
 Cats visibility ½ SM; increase all MDA 120 feet and LNAV Cat C/D visibility ¼ SM and Circling Cat D
 visibility ½ SM. VDP and Baro-VNAV NA when using Greenwood altimeter setting.

MISSED APPROACH:
 Climb to 2000 direct
 KEVNE and hold.

ASOS 125.525	MEMPHIS CENTER 135.875 269.35	GREENVILLE TOWER ★ 119.0 (CTAF) 0 256.9	GND CON 121.8 256.9	UNICOM 122.95
------------------------	---	--	-------------------------------	-------------------------



CATEGORY	A	B	C	D
LPV DA		378-1	250 (300-1)	
LNAV/VNAV DA		446-1	318 (400-1)	
LNAV MDA		480-1	352 (400-1)	480-1¼ 352 (400-1¼)
CIRCLING	600-1	469 (500-1)	600-1½ 469 (500-1½)	800-2 669 (700-2)

SC-4, 23 MAR 2023 to 20 APR 2023

SC-4, 23 MAR 2023 to 20 APR 2023