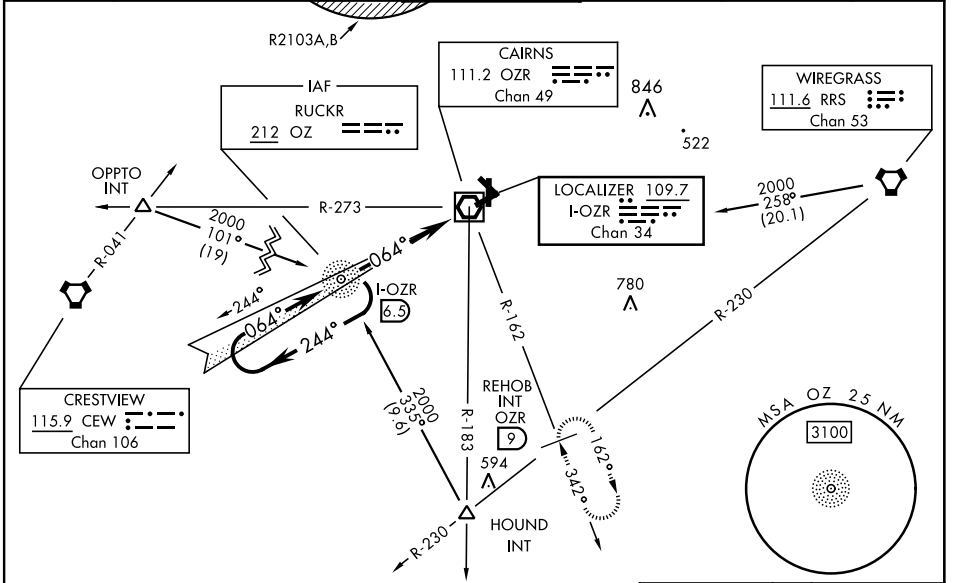


FORT RUCKER, ALABAMA

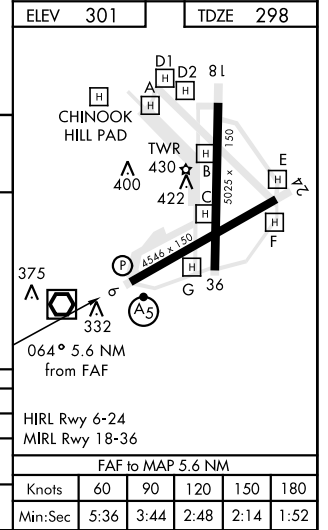
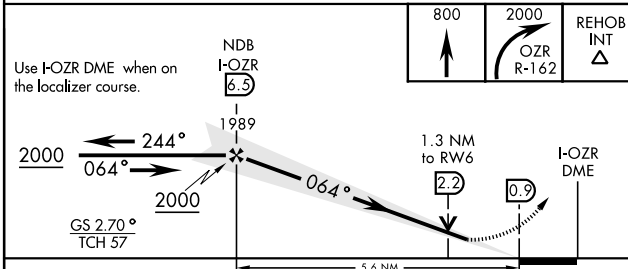
ILS or LOC RWY 6

LOC I-OZR 109.7 Chan 34	APCH CRS 064°	Rwy Idg TDZE Arpt Elev 4546 298 301	AL-577 [USA]	CAIRNS AAF (KOZR)
---	-------------------------	---	--------------	-------------------

ADF or DME required.		MALS R (A5)	MISSED APPROACH: Climb to 800 then climbing right turn to 2000 via OZR VOR/DME R-162 to REHOB INT (OZR 9 DME) and hold; or when directed by ATC, climb to 800 then climbing left turn to 2000 heading 290° within 10 NM (RADAR required).				
ATIS 111.2 316.15	125.4 133.75 121.1	APP CON 327.125 270.35 319.25	021°-120° 121°-219° 220°-340° 341°-020°	TOWER* 135.2 (CTAF) 248.55	GND CON 121.9 288.25	CLNC DEL 118.075 380.1	PAR



ELEV 301	TDZE 298
----------	----------



CATEGORY	A	B	C	D
S-ILS 6		498/24	200 (200-½)	
S-LOC 6 *	760/24	462 (500-½)	760/40 462 (500-¾)	760/50 462 (500-1)
CIRCLING	780-1 479 (500-1)	820-1 519 (600-1)	860-1½ 559 (600-1½)	900-2 599 (600-2)

HIRL Rwy 6-24					
MIRL Rwy 18-36					
FAF to MAP 5.6 NM					
Knots	60	90	120	150	180
Min:Sec	5:36	3:44	2:48	2:14	1:52

FORT RUCKER, ALABAMA
Amdt B 05NOV20

31° 16' N-85° 43' W

CAIRNS AAF (KOZR)

ILS or LOC RWY 6

SE-4, 23 MAR 2023 to 20 APR 2023

SE-4, 23 MAR 2023 to 20 APR 2023