

# NDB RWY 6

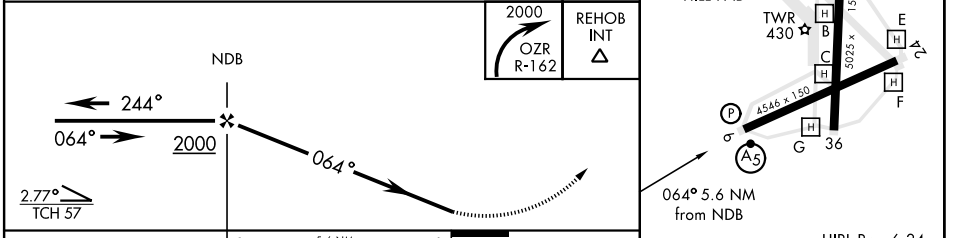
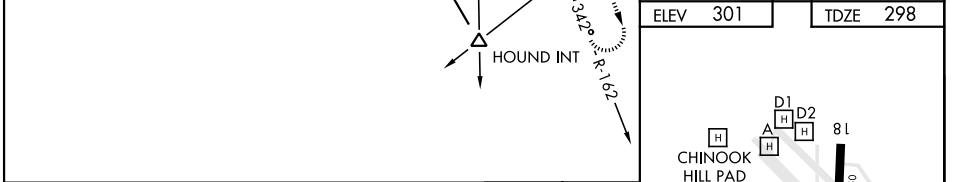
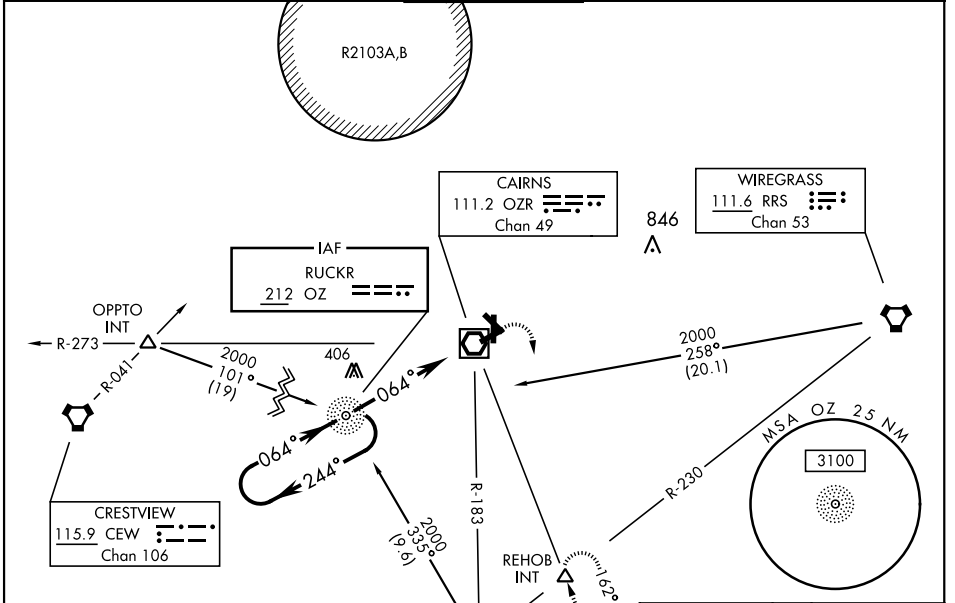
NDB OZ <b>212</b>	APCH CRS <b>064°</b>	Rwy Ldg TDZE <b>298</b> Arprt Elev <b>301</b>	AL-577 [USA]	CAIRNS AAF (KOZR)
----------------------	-------------------------	--	--------------	-------------------

▼\* When ALS inop, increase CAT AB RVR to 50, vis to 1 mile; CAT CD RVR to 60, vis to 1¼ miles.  
 Visibility reduction by helicopters NA.

MALS R (A5)

MISSED APPROACH: Climbing right turn to 2000 via OZR VOR/DME R-162 to REHOB INT and hold; or when directed by ATC, climbing left turn to 2000 heading 290° within 10 NM (RADAR required).

ATIS <b>111.2</b> <b>316.15</b>	APP CON <b>125.4 327.125</b> 021°-120° <b>133.75 270.35</b> 121°-219° <b>133.45 239.275</b> 220°-340° <b>121.1 319.25</b> 341°-020°	TOWER ★ <b>135.2 (CTAF)</b> <b>248.55</b>	GND CON <b>121.9</b> <b>288.25</b>	CLNC DEL <b>118.075</b> <b>380.1</b>	PAR
---------------------------------------	---	---	--	--	-----



CATEGORY	S-6 *				FAF to MAP 5.6 NM					
	A	B	C	D	Knots	60	90	120	150	180
CIRCLING	780-1 479 (500-1)	820-1 519 (600-1)	860-1½ 559 (600-1½)	900-2 599 (600-2)	Min:Sec	5:36	3:44	2:48	2:14	1:52

FORT RUCKER, ALABAMA 31° 16' N-85° 43' W CAIRNS AAF (KOZR)

# NDB RWY 6

SE-4, 23 MAR 2023 to 20 APR 2023

SE-4, 23 MAR 2023 to 20 APR 2023