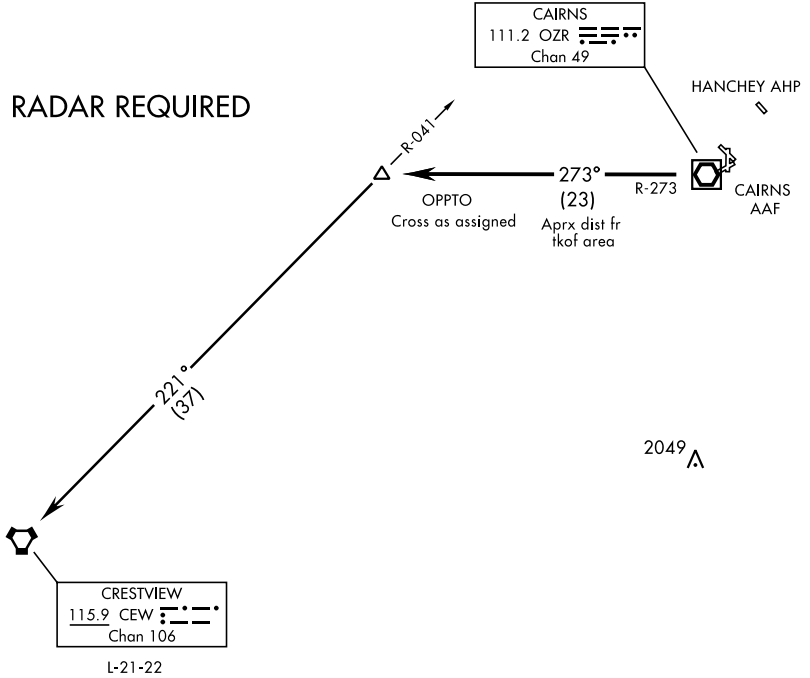


# OPPTO-TWO DEPARTURE (OPPTO2•OPPTO)

ATIS 111.2 316.15  
 CLNC DEL  
 118.075 380.1  
 GND CON  
 121.9 288.25  
 TOWER ★  
 135.2 (CTAF) 248.55  
 DEP CON  
 133.45 239.275  
 JACKSONVILLE CENTER  
 120.2 346.4

AL-577 [USA]

## RADAR REQUIRED



SE-4, 23 MAR 2023 to 20 APR 2023

SE-4, 23 MAR 2023 to 20 APR 2023

### DEPARTURE ROUTE DESCRIPTION

- TAKEOFF RWY 6: Climbing left turn heading 270° ....
  - TAKEOFF RWY 18: Climbing right turn heading 205° ....
  - TAKEOFF RWY 24: Climbing right turn heading 300° ....
  - TAKEOFF RWY 36: Climbing left turn heading 270° ....
  - TAKEOFF PAD A: Climb heading 310° ....
  - TAKEOFF PAD D2: Climb heading 360° ....
- Maintain 2000, expect clearance to requested altitude/flight level ten (10) minutes after departure.  
 Expect Radar vector to intercept OZR VOR/DME R-273 to OPPTO INT. Thence via Transition.
- CRESTVIEW TRANSITION: (OPPTO2 • CEW) Turn left via CEW R-041 to CEW VORTAC.