

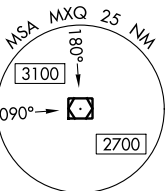
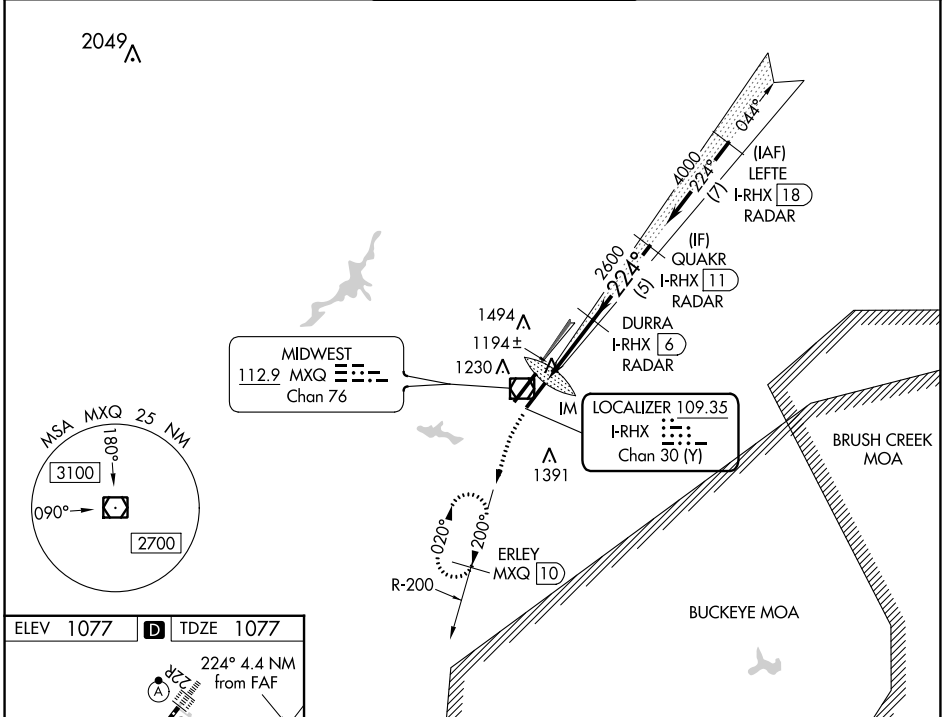
LOC/DME I-RHX 109.35 Chan 30 (Y)	APP CRS 224°	Rwy Idg 9000 TDZE 1077 Apt Elev 1077
------------------------------------------------------	------------------------	-----------------------------------------------------------------

ILS or LOC RWY 22L

WILMINGTON AIR PARK (ILN)

DME required for missed approach. RADAR required for procedure entry.	ALSIF-2 	MISSED APPROACH: Climb to 1500 then climbing left turn to 4000 on MXQ VOR/DME R-200 to ERLEY/MXQ 10 DME and hold.
Simultaneous approach authorized. For inop ALS, increase S-LOC 22L Cats A/B visibility to RVR 5500.		

D-ATIS 124.925	COLUMBUS APP CON 118.85 269.275	WILMINGTON TOWER * 119.475 (CTAF) 0	GND CON 121.6	CLNC DEL 128.85
--------------------------	-------------------------------------------	-----------------------------------------------	-------------------------	---------------------------



ELEV 1077	D	TDZE 1077			
TDZ/CL 22R Δ TDZ/CL 22L HIRL Rwy 4R-22L HIRL Rwy 4L-22R Δ					
FAF to MAP 4.4 NM					
Knots	60	90	120	150	180
Min:Sec	4:24	2:56	2:12	1:46	1:28

1500	4000	ERLEY MXQ 10	VGSI and ILS glidepath not coincident (VGSI Angle 3.00/TCH 71).	
			DURRA I-RHX 6 RADAR	QUAKR I-RHX 11 RADAR
CATEGORY	A	B	C	D
S-ILS 22L	1277/18 200 (200-1/2)			
S-LOC 22L	1460/24	383 (400-1/2)	1460/35	383 (400-5/8)
CIRCLING	1540-1	463 (500-1)	1860-2 1/4 783 (800-2 1/4)	1860-2 1/2 783 (800-2 1/2)

EC-2, 23 MAR 2023 to 20 APR 2023

EC-2, 23 MAR 2023 to 20 APR 2023