

LOC I-HWM 110.7	APP CRS 044°	Rwy Idg 10701 TDZE 1057 Apt Elev 1077
---------------------------	------------------------	--

ILS or LOC RWY 4L

WILMINGTON AIR PARK (ILN)

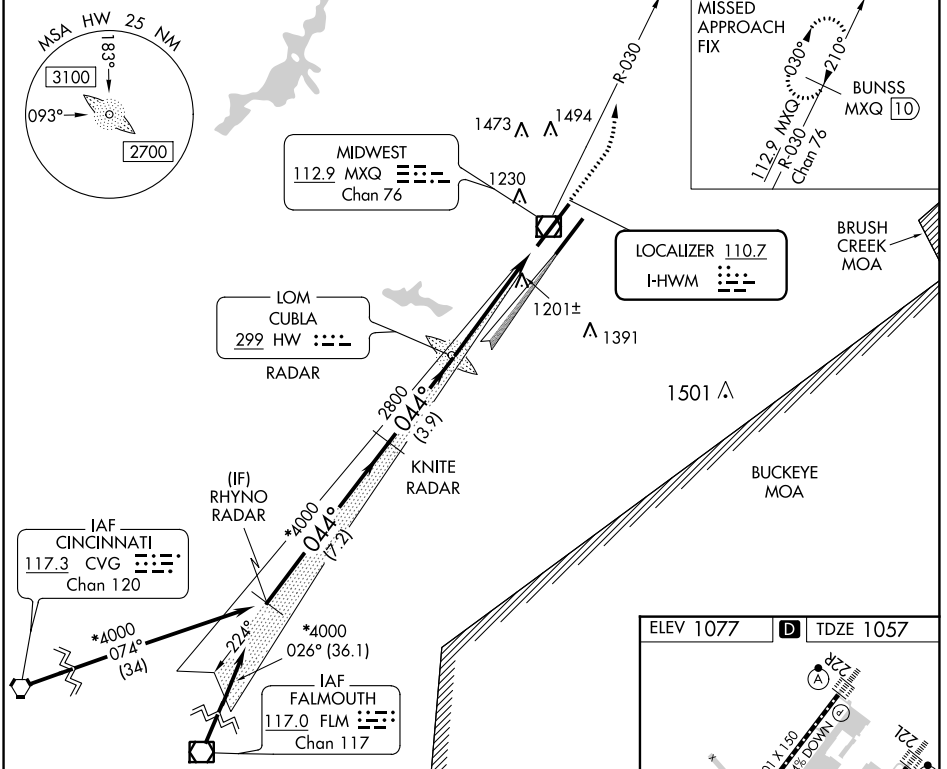
DME required. RADAR required to define RHYNO and KNITE.

Simultaneous approach authorized. For inop ALS, increase S-LOC 4L Cats A/B visibility to RVR 5500 and Cats C/D visibility to RVR 6000. # RVR 1800 authorized with use of FD or AP or HUD to DA.

MALSR

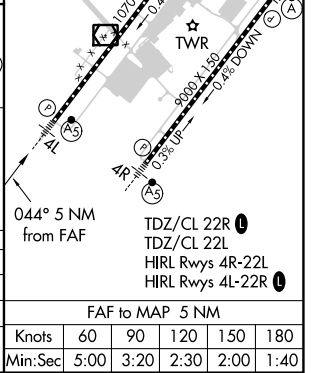
MISSED APPROACH: Climb to 1600 then climbing left turn to 4000 on MXQ VOR/DME R-030 to BUNSS/MXQ 10 DME and hold.

D-ATIS 124.925	COLUMBUS APP CON 118.85 269.275	WILMINGTON TOWER * 119.475 (CTAF)	GND CON 121.6	CLNC DEL 128.85
--------------------------	---	---	-------------------------	---------------------------



VGSI and ILS glidepath not coincident (VGSI Angle 3.00/TCH 62).

RHYNO RADAR	KNITE RADAR	HW LOM RADAR	BUNSS MXQ 10
*4000	*4000	2725	
GS 3.00° TCH 51	*2800 when authorized by ATC.	2800	
CATEGORY	A	B	C
S-ILS 4L #	1257/24 200 (200-½)		
S-LOC 4L	1460/24	403 (400-½)	1460/40 403 (400-¾)
CIRCLING	1540-1	463 (500-1)	1860-2¼ 783 (800-2¼) 1860-2½ 783 (800-2½)



EC-2, 23 MAR 2023 to 20 APR 2023

EC-2, 23 MAR 2023 to 20 APR 2023

FAF to MAP 5 NM					
Knots	60	90	120	150	180
Min:Sec	5:00	3:20	2:30	2:00	1:40