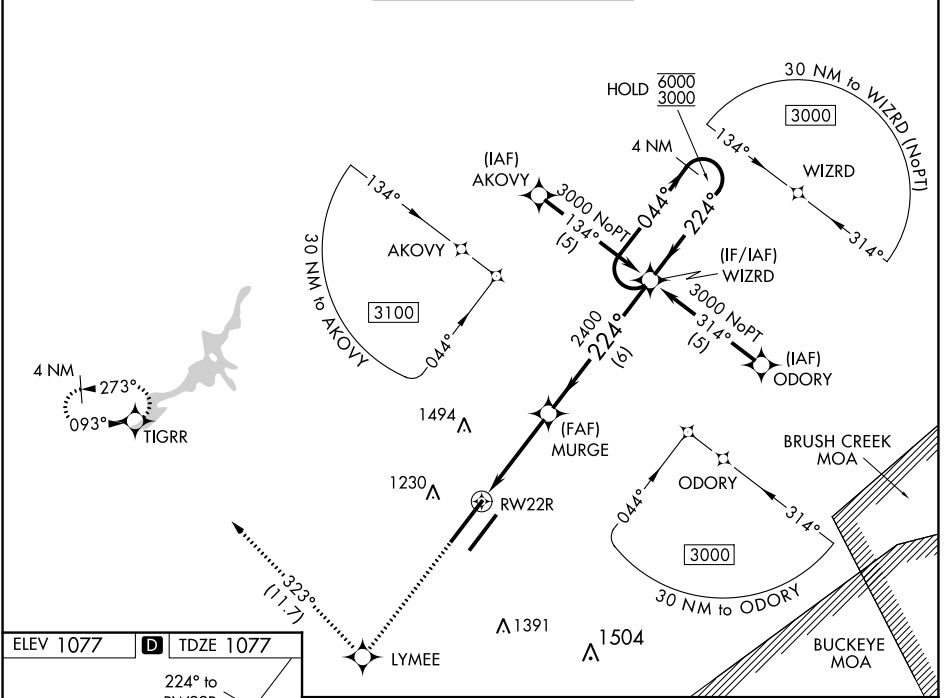


WAAS CH 40214 W22A	APP CRS 224°	Rwy Idg TDZE 1077 Apt Elev 1077	10701
--	------------------------	---	--------------

RNAV (GPS) RWY 22R

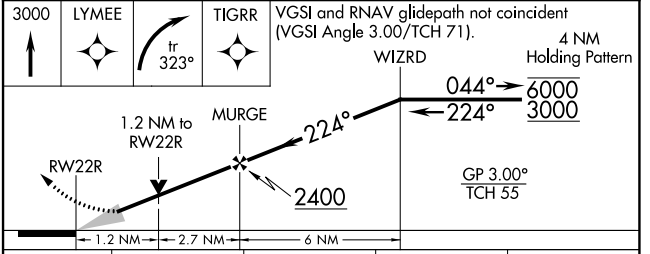
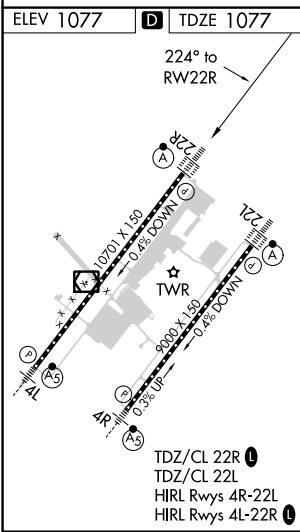
WILMINGTON AIR PARK (ILN)

RNP APCH - GPS.		ALSF-2	MISSED APPROACH: Climb to 3000 direct LYMEE and right turn on track 323° to TIGRR and hold.	
<p>⚠ For uncompensated Baro-VNAV systems, LNAV/VNAV NA below -17°C or above 54°C. For inop ALS, increase LNAV/VNAV all Cats visibility to RVR 6000, LNAV Cats A/B to RVR 5500, and LNAV Cats C/D to 1 3/8 SM.</p>				
D-ATIS 124.925	COLUMBUS APP CON 118.85 269.275	WILMINGTON TOWER ★ 119.475 (CTAF) 0	GND CON 121.6	CLNC DEL 128.85



EC-2, 23 MAR 2023 to 20 APR 2023

EC-2, 23 MAR 2023 to 20 APR 2023



CATEGORY	A	B	C	D
LPV DA		1277/18	200 (200-1/2)	
LNAV/VNAV DA		1497/40	420 (500-3/4)	
LNAV MDA	1540/24	463 (500-1/2)	1540/50	463 (500-1)
C CIRCLING	1540-1	463 (500-1)	1860-2 1/4 783 (800-2 1/4)	1860-2 1/2 783 (800-2 1/2)