


LOC I-RDG <b>109.5</b>	APP CRS <b>004°</b>	Rwy Idg <b>5151</b> TDZE <b>343</b> Apt Elev <b>344</b>
---------------------------	------------------------	---

# ILS or LOC RWY 36

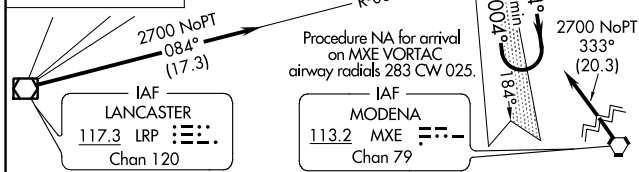
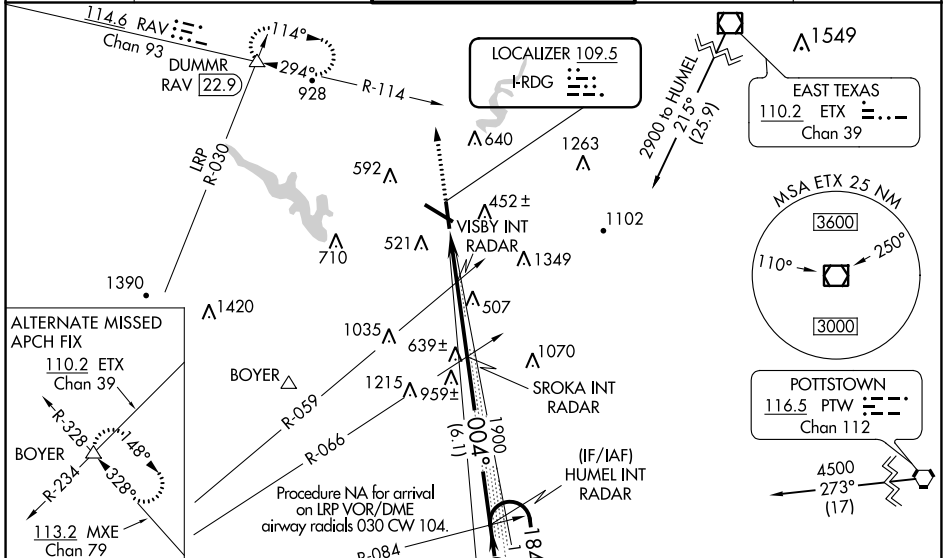
READING RGNL/CARL A SPAATZ FLD (RDG)

**⚠** Night Landing: Rwy 18, 31 NA. Inoperative table does not apply. When local altimeter setting not received, use Harrisburg Intl altimeter setting and increase S-ILS 36 DA to 686 feet and all Cats visibility ¼ SM, and increase all MDAs 100 feet, and S-LOC 36 Cats C and D and Circling Cats B and C visibility ¼ SM.

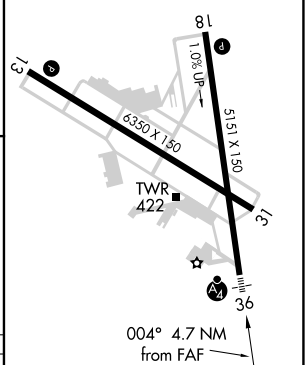
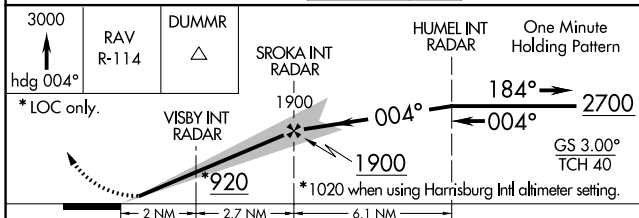
**MALSIF** 

**MISSED APPROACH:** Climb to 3000 on heading 004° and RAV VORTAC R-114 to DUMMR INT/RAV 22.9 DME and hold, continue climb-in-hold to 3000.

ATIS <b>127.1</b>	READING APP CON* <b>125.15 257.9</b>	READING TOWER* <b>119.9 (CTAF) 288.3</b>	GND CON <b>121.9</b>	UNICOM <b>122.95</b>
----------------------	---	---	-------------------------	-------------------------



ELEV 344	<b>D</b>	TDZE 343
----------	----------	----------



CATEGORY	A	B	C	D
S-ILS 36		593-1	250 (300-1)	
S-LOC 36	820-1	477 (500-1)	820-1¼ 477 (500-1¼)	820-1½ 477 (500-1½)
CIRCLING	1020-1 676 (700-1)	1080-1 736 (800-1)	1280-2¾ 936 (1000-2¾)	1660-3 1316 (1400-3)

REIL Rwy 13 and 31					
HRL Rws 13-31 and 18-36					
FAF to MAP 4.7 NM					
Knots	60	90	120	150	180
Min:Sec	4:42	3:08	2:21	1:53	1:34

NE-4, 23 MAR 2023 to 20 APR 2023

NE-4, 23 MAR 2023 to 20 APR 2023