

APP CRS **184°**  
 Rwy Idg **5151**  
 TDZE **319**  
 Apt Elev **344**

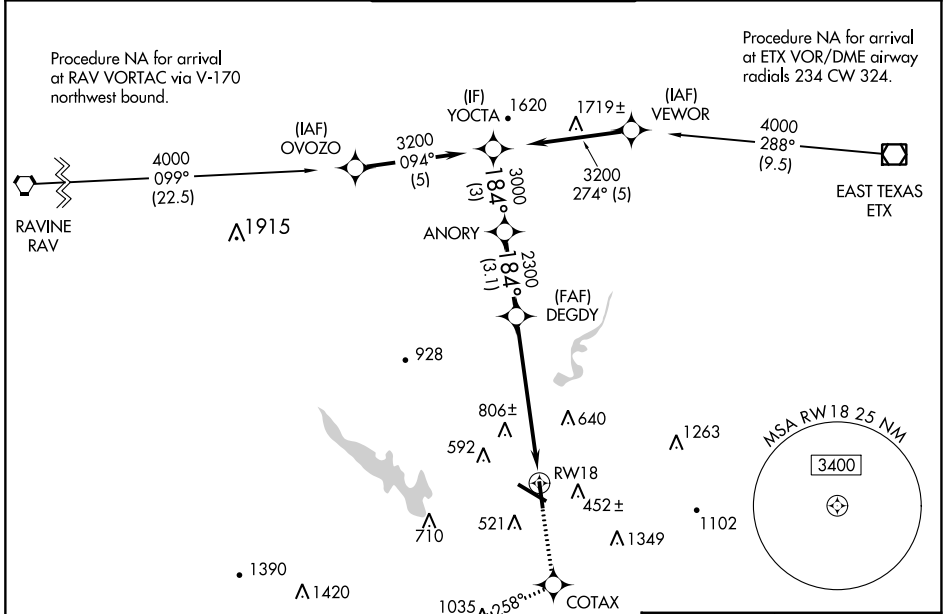
# RNAV (GPS) RWY 18

READING RGNL/CARL A SPAATZ FLD (RDG)

**⚠** Night landing: Rwy 18, 31 NA. DME/DME RNP-0.3 NA. Helicopter visibility reduction below 1 SM NA. When local altimeter setting not received, use Harrisburg Intl altimeter setting and increase all MDAs 100 feet, and increase LNAV Cat B visibility ¼ SM and Cat C and D visibility ½ SM, and increase Circling Cats B and C visibility ¼ SM.

**MISSED APPROACH:** Climb to 3000 direct COTAX and via 258° track to BOYER and hold, continue climb-in-hold to 3000.

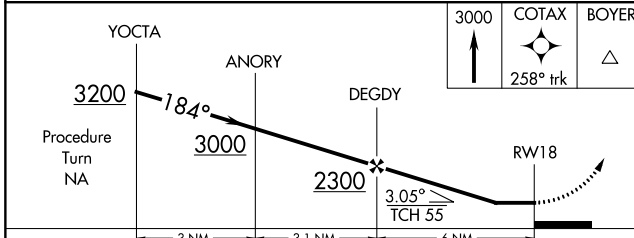
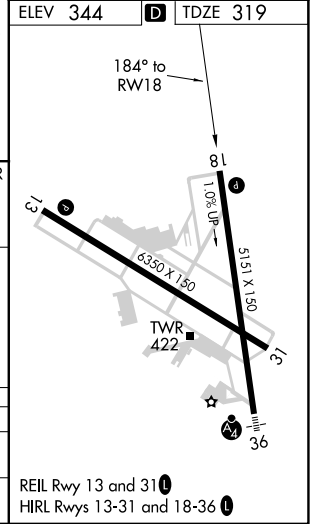
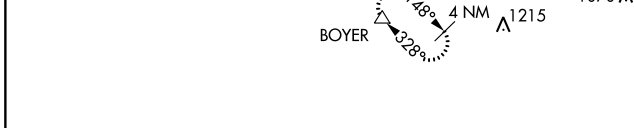
ATIS <b>127.1</b>	READING APP CON * <b>125.15 257.9</b>	READING TOWER * <b>119.9 (CTAF) 288.3</b>	GND CON <b>121.9</b>	UNICOM <b>122.95</b>
----------------------	--	--	-------------------------	-------------------------



NE-4, 23 MAR 2023 to 20 APR 2023

NE-4, 23 MAR 2023 to 20 APR 2023

ELEV 344 **D** TDZE 319



CATEGORY	A	B	C	D
LNAV MDA	980-1	661 (700-1)	980-1¾ 661 (700-1¾)	980-2 661 (700-2)
CIRCLING	1020-1 676 (700-1)	1080-1 736 (800-1)	1280-2¾ 936 (1000-2¾)	1660-3 1316 (1400-3)

# RNAV (GPS) RWY 18

REIL Rwy 13 and 31  
 HIRL Rwy 13-31 and 18-36