

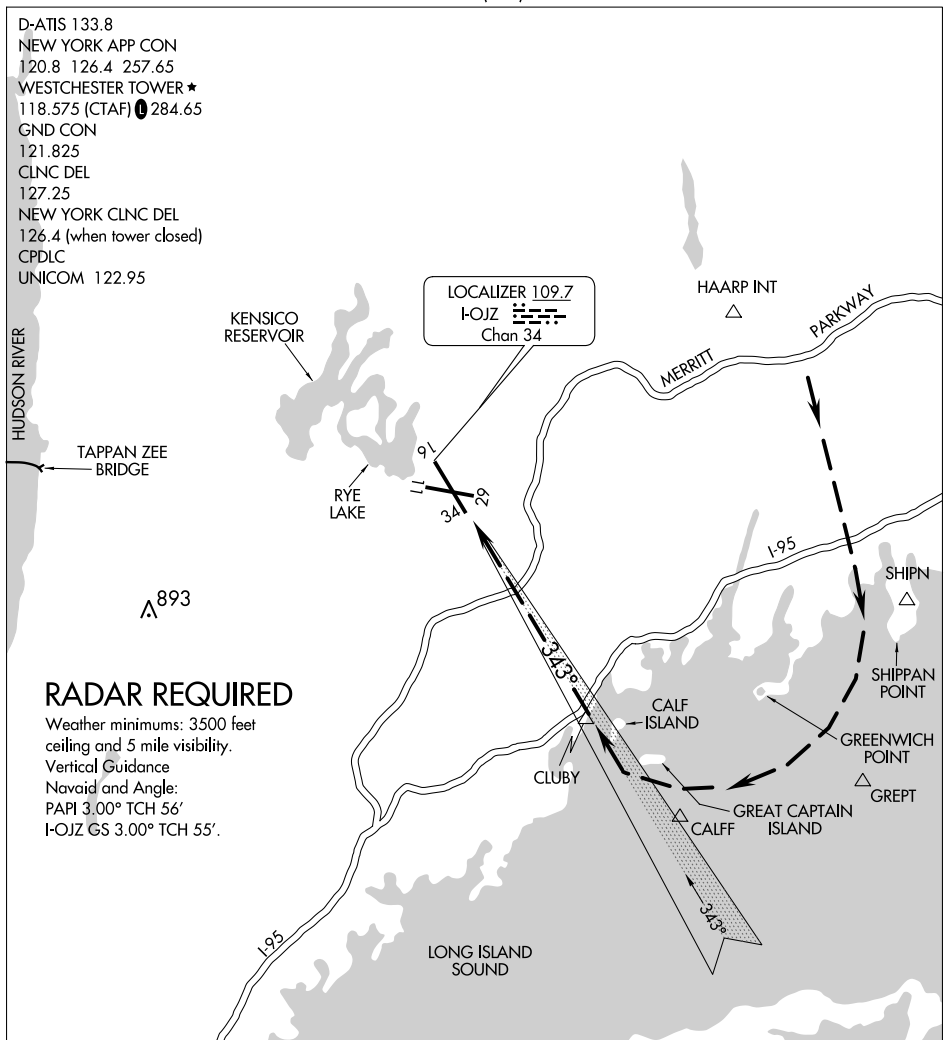
# SOUND VISUAL RWY 34

AL-651 (FAA)

WESTCHESTER COUNTY (HPN)  
WHITE PLAINS, NEW YORK

D-ATIS 133.8  
 NEW YORK APP CON  
 120.8 126.4 257.65  
 WESTCHESTER TOWER ★  
 118.575 (CTAF) 284.65  
 GND CON  
 121.825  
 CLNC DEL  
 127.25  
 NEW YORK CLNC DEL  
 126.4 (when tower closed)  
 CPDLC  
 UNICOM 122.95

LOCALIZER 109.7  
 I-OJZ  
 Chan 34



NE-2, 23 MAR 2023 to 20 APR 2023

NE-2, 23 MAR 2023 to 20 APR 2023

## RADAR REQUIRED

Weather minimums: 3500 feet ceiling and 5 mile visibility.  
 Vertical Guidance  
 Navaid and Angle:  
 PAPI 3.00° TCH 56'  
 I-OJZ GS 3.00° TCH 55'.

|      |   |   |   |   |   |   |   |    |    |    |    |    |    |    |
|------|---|---|---|---|---|---|---|----|----|----|----|----|----|----|
| 1 NM | 3 | 4 | 5 | 6 | 7 | 8 | 9 | 10 | 11 | 12 | 13 | 14 | 15 | 16 |
|------|---|---|---|---|---|---|---|----|----|----|----|----|----|----|

### SOUND VISUAL RWY 34

When cleared for a Sound Visual Approach RWY 34, maintain 3000 feet until south of the shoreline on base leg (2000 feet when authorized by ATC).

Fly depicted track to remain offshore of Greenwich Point.

# SOUND VISUAL RWY 34

41°04'N-73°42'W

WHITE PLAINS, NEW YORK  
WESTCHESTER COUNTY (HPN)