

LOC I-PSM <b>110.1</b>	APP CRS <b>345°</b>	Rwy Idg TDZE Apt Elev	<b>11321</b> <b>84</b> <b>100</b>
---------------------------	------------------------	-----------------------------	---

# ILS or LOC RWY 34

PORTSMOUTH INTL AT PEASE (PSM)

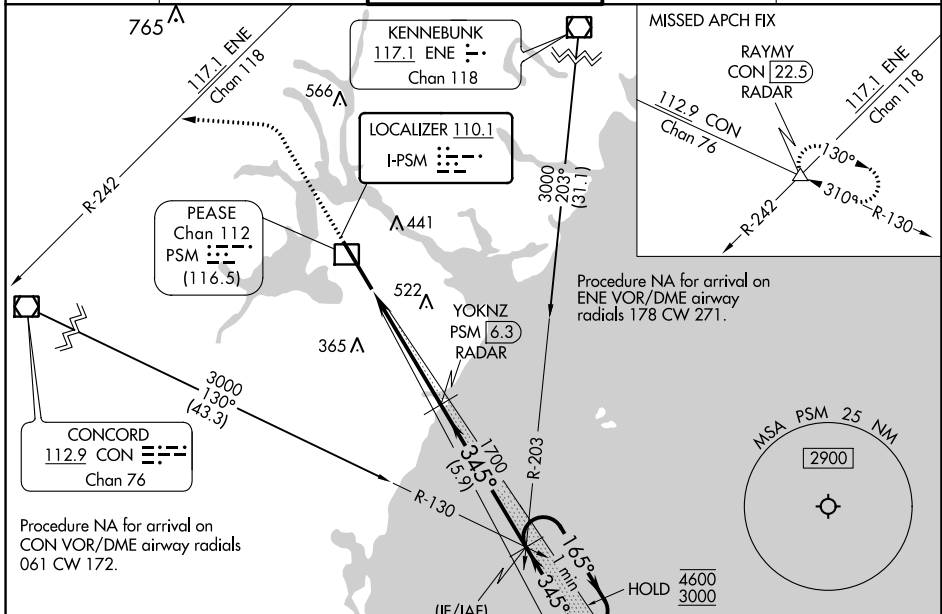
DME or RADAR required.

**⚠** Circling NA east of Rwy 16-34. DME from PSM DME. Simultaneous reception of I-PSM and PSM DME required. For inop ALS, increase S-ILS 34 Cat E visibility to RVR 4000; increase S-LOC 34 Cat E visibility to 1 1/2 SM.

MALSR

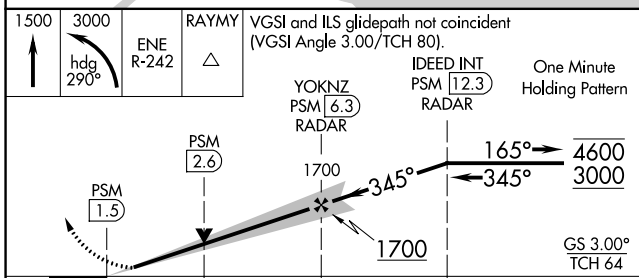
MISSED APPROACH: Climb to 1500 then dimbing left turn on heading 290° to 3000 and ENE VOR/DME R-242 to RAYMY INT/CON VOR/DME 22.5 DME/RADAR and hold.

ATIS <b>132.05 273.5</b>	BOSTON APP CON <b>125.05 269.4</b>	PORTSMOUTH TOWER <b>128.4 269.0</b>	GND CON <b>120.95 275.8</b>	CLNC DEL <b>335.8</b>
-----------------------------	---------------------------------------	--	--------------------------------	--------------------------



Use of CON R-130 and ENE R-203 may be necessary to locate IDEED intersection.

(IF/IAF)  
IDEED INT  
PSM [12.3]  
RADAR  
CON [43.3]  
ENE [31.1]



CATEGORY	A	B	C	D	E
S-ILS 34	284/24 200 (200-1/2)				
S-LOC 34	540/24 456 (500-1/2) 540/45 456 (500-3/4)				
<b>CIRCLING</b>	540-1 440 (500-1)	560-1 460 (500-1)	680-1 1/2 580 (600-1 1/2)	780-2 1/4 680 (700-2 1/4)	800-2 1/2 700 (700-2 1/2)

ELEV 100 **D** TDZE 84

HOLD 4600/3000

RAYMY CON 22.5 RADAR

IDEED INT PSM [12.3] RADAR

YOKNZ PSM [6.3] RADAR

PSM [2.6]

PSM [1.5]

GS 3.00° TCH 64

345° 4.9 NM from FAF

HIRL Rwy 16-34

FAF to MAP 4.9 NM

Knots	60	90	120	150	180
Min:Sec	4:54	3:16	2:27	1:58	1:38

NE-1, 23 MAR 2023 to 20 APR 2023

NE-1, 23 MAR 2023 to 20 APR 2023