

WAAS CH 40012 W16A	APP CRS 165°	Rwy Idg TDZE Apt Elev	10518 100 100
--	------------------------	-----------------------------	--

RNAV (GPS) RWY 16

PORTSMOUTH INTL AT PEASE (PSM)

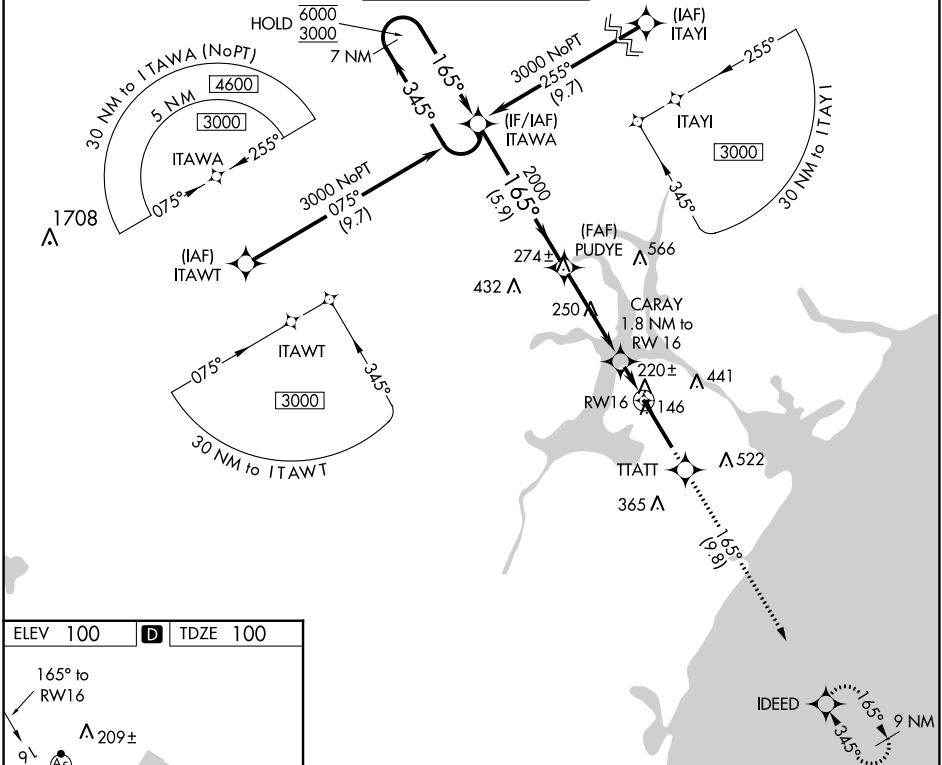
RNP APCH - GPS.

⚠ For uncompensated Baro-VNAV systems, LNAV/VNAV NA below -15°C or above 54°C. Circling NA east of Rwy 16-34. For inop ALS, increase LPV Cat E visibility to RVR 4500; increase LNAV/VNAV all Cats visibility to RVR 4500; increase LNAV Cat C/D/E visibility to RVR 5500. * RVR 1800 authorized with use of FD or AP or HUD to DA (NA when using Rochester altimeter setting).



MISSED APPROACH:
Climb to 3000 direct TTATT and track 165° to IDEED and hold, continue climb-in-hold to 3000.

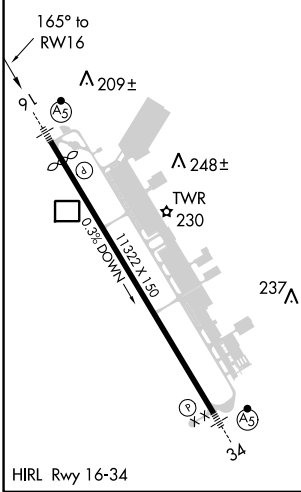
ATIS 132.05 273.5	BOSTON APP CON 125.05 269.4	PORTSMOUTH TOWER 128.4 269.0	GND CON 120.95 275.8	CLNC DEL 335.8
-----------------------------	---------------------------------------	---	--------------------------------	--------------------------



NE-1, 23 MAR 2023 to 20 APR 2023

NE-1, 23 MAR 2023 to 20 APR 2023

ELEV 100	D	TDZE 100
----------	----------	----------



PORTSMOUTH, NEW HAMPSHIRE
Amdt 3A 30DEC21

VGSIs and RNAV glidepath not coincident 7 NM (VGS Angle 3.00/TCH 72). Holding Pattern ITAWA					
GP 3.00° TCH 55 6000 ← 345° 3000 → 165°		2000 CARAY 1.8 NM to RWY 16 720	1 NM to RWY 16 RWY 16	IDEED 9 NM 165° 345°	
		← 5.9 NM → ← 4 NM → ← 0.8 NM → ← 1 NM →			
CATEGORY	A	B	C	D	E
LPV DA*	300/24 200 (200-½)				
LNAV/VNAV DA	397/24 297 (300-½)				
LNAV MDA	480/24 380 (400-½) 480/35 380 (400-¾)				
CIRCLING	500-1	560-1	680-1½	780-2¼	800-2½
	400 (400-1)	460 (500-1)	580 (600-½)	680 (700-2¼)	700 (700-2½)