

(TANKR3.TANKR) 21112  
**TANKER THREE DEPARTURE** AL-678 (FAA)

PORTSMOUTH INTL AT PEASE (PSM)  
 PORTSMOUTH, NEW HAMPSHIRE

ATIS  
 132.05 273.5  
 CLNC DEL  
 335.8  
 GND CON  
 120.95 275.8  
 PSM TOWER  
 128.4 269.0  
 BOSTON DEP CON  
 125.05 269.4

**TOP ALTITUDE:  
 3000**

KENNEBUNK  
 117.1 ENE  
 Chan 118  
 N43°25.54' - W70°36.81'  
 L-32, H-11-12

CONCORD  
 112.9 CON  
 Chan 76  
 N43°13.19' - W71°34.53'  
 L-32-33

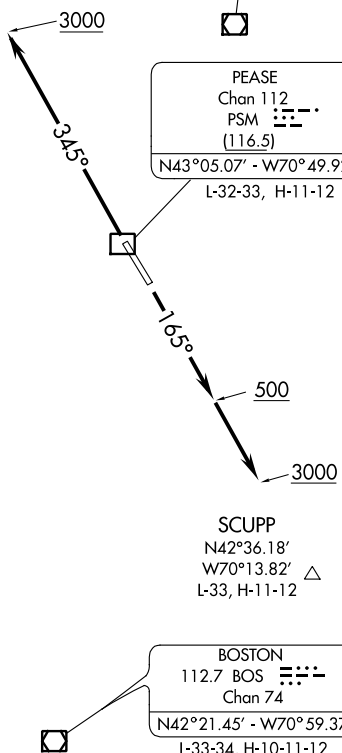
CAMBRIDGE  
 115.0 CAM  
 Chan 97  
 N42°59.66' - W73°20.64'  
 L-32-34, H-11-12

PEASE  
 Chan 112  
 PSM  
 (116.5)  
 N43°05.07' - W70°49.92'  
 L-32-33, H-11-12

GARDNER  
 110.6 GDM  
 Chan 43  
 N42°32.76' - W72°03.49'  
 L-33-34, H-11-12

SCUPP  
 N42°36.18'  
 W70°13.82' △  
 L-33, H-11-12

BOSTON  
 112.7 BOS  
 Chan 74  
 N42°21.45' - W70°59.37'  
 L-33-34, H-10-11-12



TAKEOFF MINIMUMS:  
 Rwy 16, 34: Standard.

NOTE: RADAR required.

NOTE: Chart not to scale.

**DEPARTURE ROUTE DESCRIPTION**

TAKEOFF RUNWAY 16: Climb on heading 165° to 500, continue climb to 3000 or as assigned by ATC, thence. . . .

TAKEOFF RUNWAY 34: Climb on heading 345° to 3000 or as assigned by ATC, thence. . . .

. . . . expect RADAR vectors to assigned route/navaid/fix. Expect further clearance to filed altitude/flight level 5 minutes after departure.

**TANKER THREE DEPARTURE**  
 (TANKR3.TANKR) 22APR21

PORTSMOUTH, NEW HAMPSHIRE  
 PORTSMOUTH INTL AT PEASE (PSM)

NE-1, 23 MAR 2023 to 20 APR 2023

NE-1, 23 MAR 2023 to 20 APR 2023