

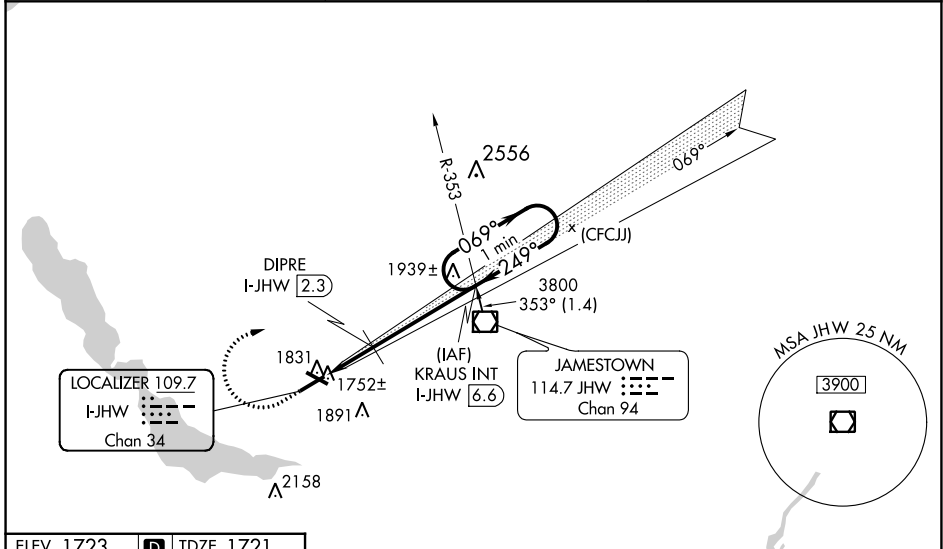
LOC/DME I-JHW <b>109.7</b> Chan <b>34</b>	APP CRS <b>249°</b>	Rwy Idg <b>5299</b> TDZE <b>1721</b> Apt Elev <b>1723</b>
---	------------------------	---

**ILS or LOC RWY 25**  
CHAUTAUQUA COUNTY/JAMESTOWN (JHW)

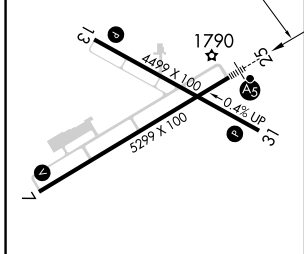
**∇** Circling to Rwy 13/31 NA at night. Autopilot coupled approach NA below 2420. VDP NA with Dunkirk altimeter setting. Cat D SI NA when using Dunkirk altimeter. When local altimeter setting not received, use Dunkirk altimeter setting and increase S-ILS 25 DA to 2161 and all MDA 200 feet; increase S-ILS 25 all Cats visibility 3/4 mile; increase S-LOC 25 Cats A and B visibility to 3/4, Circling Cats A and B 1 1/4, increase S-LOC 25 Cats C and D visibility to 2, Circling Cats C visibility 2 3/4 and D visibility 3, DIPRE fix minimums increase S-LOC 25 Cats C and D visibility 1 1/8, and Circling Cats C visibility 2 and Cat D visibility 2 3/4 mile. For inoperative MALSR when using Dunkirk altimeter setting, increase S-ILS 25 all Cats visibility 1 1/8 mile. VDP NA when using Dunkirk altimeter setting.

**MALSR**  
**AS**  
MISSED APPROACH: Climb to 2420 then climbing right turn to 3800 on heading 125° and I-JHW LOC course NE to KRAUS INT/ I-JHW 6.6 DME and hold.

AWOS-3PT <b>118.425</b>	BUFFALO APP CON * <b>126.05</b>	UNICOM <b>122.975 (CTAF) 0</b>
----------------------------	------------------------------------	-----------------------------------



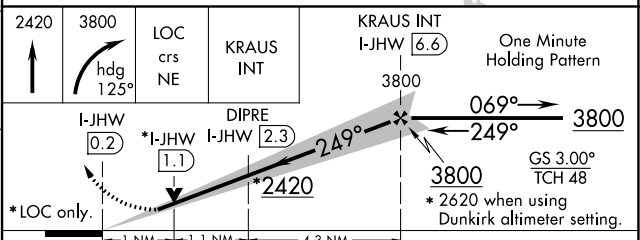
ELEV 1723	<b>D</b>	TDZE 1721
-----------	----------	-----------



REIL Rwy 31 **0**  
MIRL Rwy 13-31 **0**  
HIRL Rwy 7-25 **0**

FAF to MAP 6.4 NM

Knots	60	90	120	150	180
Min:Sec	6:23	4:15	3:11	2:33	2:08



2420	3800	LOC crs NE	KRAUS INT	KRAUS INT I-JHW [6.6]	One Minute Holding Pattern
I-JHW [0.2]	*I-JHW [1.1]	DIPRE I-JHW [2.3]	3800	069°	3800
*LOC only.	1 NM	1.1 NM	4.3 NM	249°	GS 3.00° TCH 48
	A	B	C	D	* 2620 when using Dunkirk altimeter setting.
S-ILS 25	1971-1/2		250 (300-1/2)		
S-LOC 25	2420-1/2	699 (700-1/2)	2420-1 1/2	699 (700-1 1/2)	
<b>C</b> CIRCLING	2420-1	697 (700-1)	2420-2	2420-2 1/4	697 (700-2 1/4)
DIPRE FIX MINIMUMS (DME REQUIRED)					
S-LOC 25	2080-1/2	359 (400-1/2)	2080-5/8	359 (400-5/8)	
<b>C</b> CIRCLING	2200-1	477 (500-1)	2260-1 1/2	2340-2	537 (600-1 1/2) 617 (700-2)

NE-2, 23 MAR 2023 to 20 APR 2023

NE-2, 23 MAR 2023 to 20 APR 2023