

WAAS CH <b>61105</b> <b>W03A</b>	APP CRS <b>030°</b>	Rwy Idg <b>6801</b> TDZE <b>640</b> Apt Elev <b>640</b>
--	------------------------	---

# RNAV (GPS) RWY 3

CHARLOTTESVILLE-ALBEMARLE (CHO)

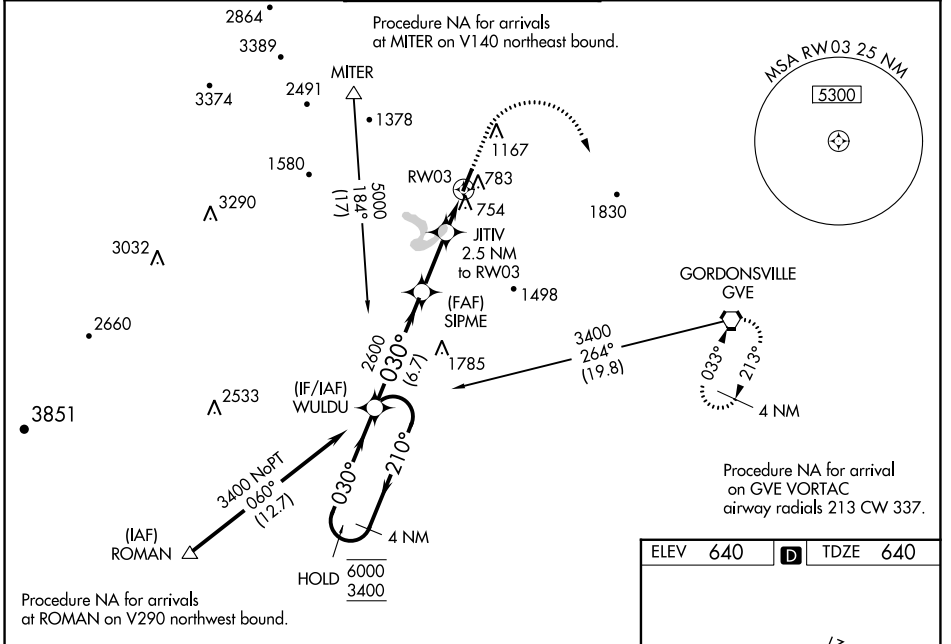
RNP APCH.

▼ For uncompensated Baro-VNAV systems, LNAV/VNAV NA below -12°C or above 54°C.  
 ▲ When local altimeter setting not received, use Orange altimeter setting and increase LPV DA to 910, LNAV/VNAV DA to 985, and all MDA 80 feet; increase LNAV/VNAV all Cats visibility 1/8 SM, LNAV Cat C/D visibility 1/4 SM and Circling Cats C/D visibility 1/4 SM. Baro-VNAV and VDP NA when using Orange altimeter setting. For Inop ALS, increase LNAV/VNAV all Cats visibility to 7/8 SM and LNAV Cats C/D visibility to 1 SM. For Inop ALS when using Orange altimeter setting, increase LPV all Cats visibility to 7/8 SM, and LNAV/VNAV all Cats visibility to 1 SM.

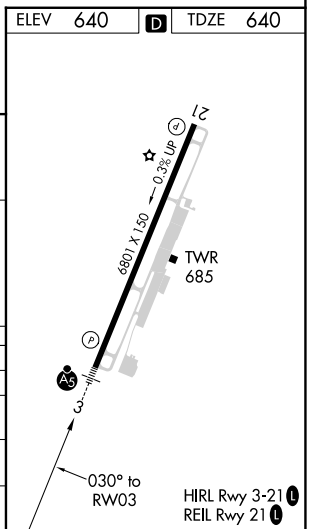
MALSR

MISSED APPROACH: Climb to 2000 then climbing right turn to 4000 direct GVE VORTAC and hold.

ATIS <b>118.425</b>	POTOMAC APP CON <b>132.85 323.125</b>	CHARLOTTESVILLE TOWER ★ <b>124.5 (CTAF) 0 338.275</b>	GND CON <b>121.9 338.275</b>	UNICOM <b>122.95</b>
------------------------	--	--	---------------------------------	-------------------------



4 NM Holding Pattern	WULDU		SIPME	JITIV	2000	4000	GVE
6000 ← 210°	← 030°	→ 030°	2600	2.5 NM to RW03	↑	↻	
3400 → 030°							
GP 3.00° TCH 54			*1480	*1 NM to RW03			
CATEGORY	A	B	C	D			
LPV DA		840-1/2	200 (200-1/2)				
LNAV/VNAV DA		915-1/2	275 (300-1/2)				
LNAV MDA	1020-1/2	380 (400-1/2)	1020-5/8	380 (400-5/8)			
CIRCLING	1100-1	460 (500-1)	1500-2 1/2	1500-2 3/4			
			860 (900-2 1/2)	860 (900-2 3/4)			



NE-3, 23 MAR 2023 to 20 APR 2023

NE-3, 23 MAR 2023 to 20 APR 2023