

WAAS CH <b>62831</b> <b>W21A</b>	APP CRS <b>196°</b>	Rwy Idg TDZE <b>626</b> Apt Elev <b>640</b>	<b>6801</b>
--	------------------------	---	-------------

# RNAV (GPS) Y RWY 21

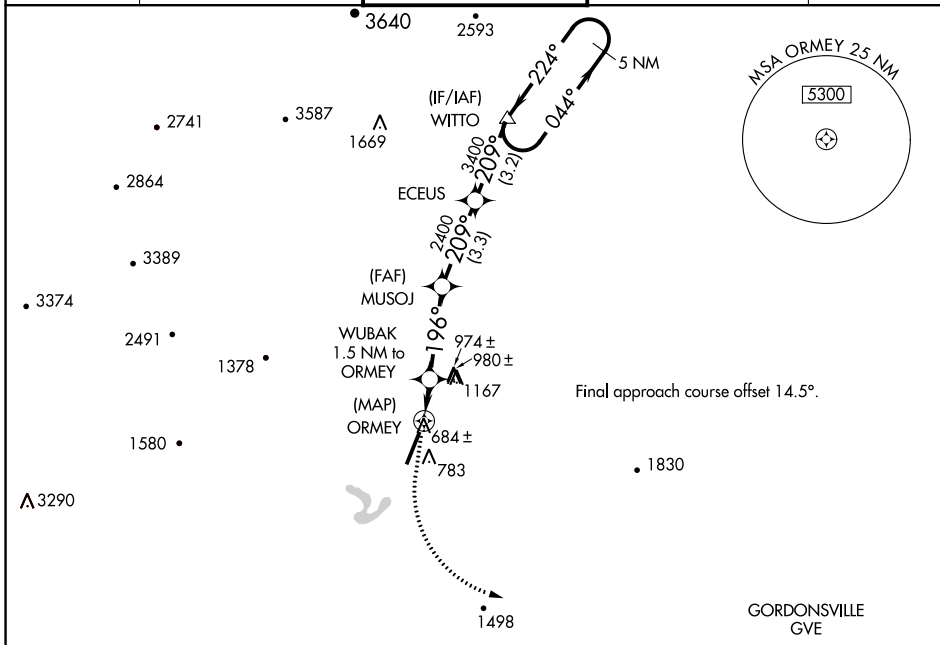
CHARLOTTESVILLE-ALBEMARLE (CHO)

RNP APCH

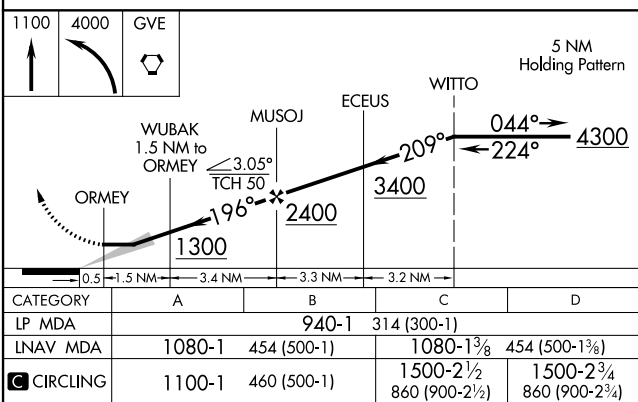
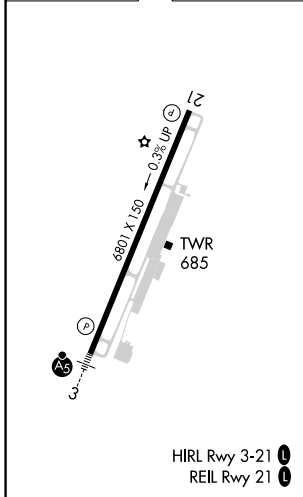
When local altimeter setting not received, use Staunton/Waynesboro/Harrisonburg altimeter setting and increase all MDA 140 feet, and increase LP Cats C/D visibility to 1 1/8 SM, LNAV Cats C/D to 1 1/4 SM, and Circling Cat C/D to 3 SM.

MISSED APPROACH: Climb to 1100 then climbing left turn to 4000 direct GVE VORTAC and hold.

ATIS <b>118.425</b>	POTOMAC APP CON <b>132.85 323.125</b>	CHARLOTTESVILLE TOWER ★ <b>124.5 (CTAF) 0 338.275</b>	GND CON <b>121.9 338.275</b>	UNICOM <b>122.95</b>
------------------------	--	--	---------------------------------	-------------------------



ELEV 640	<b>D</b>	TDZE 626
----------	----------	----------



CATEGORY	A	B	C	D
LP MDA		940-1	314 (300-1)	
LNAV MDA	1080-1	454 (500-1)	1080-1 3/8	454 (500-1 3/8)
<b>C</b> CIRCLING	1100-1	460 (500-1)	1500-2 1/2 860 (900-2 1/2)	1500-2 3/4 860 (900-2 3/4)

NE-3, 23 MAR 2023 to 20 APR 2023

NE-3, 23 MAR 2023 to 20 APR 2023