

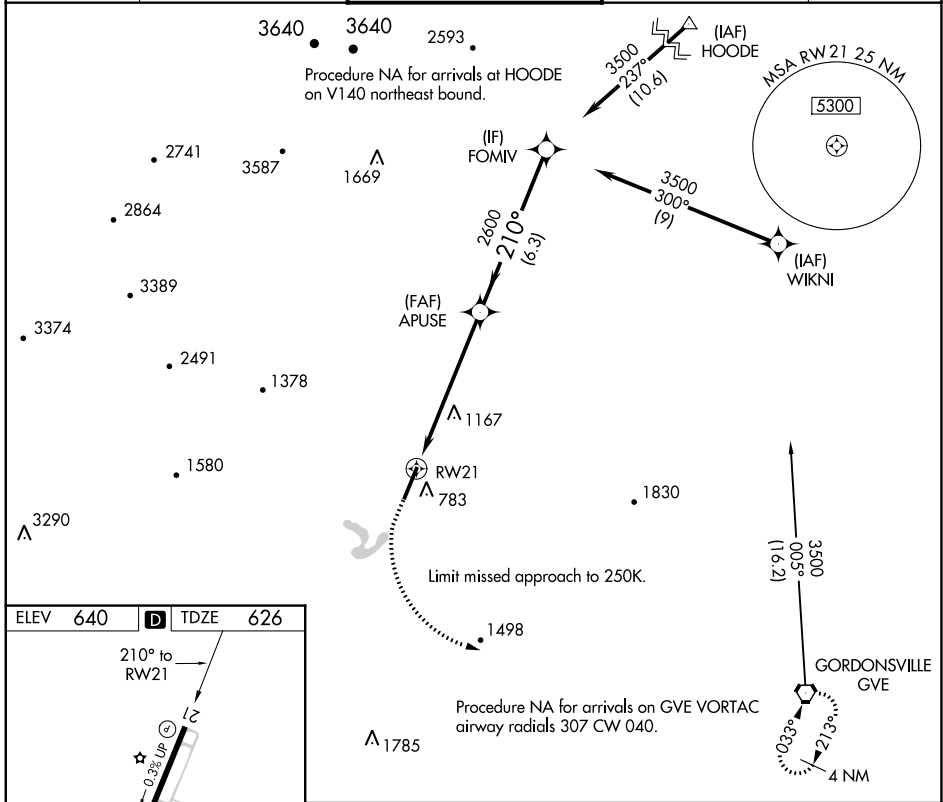
WAAS CH <b>45602</b> <b>W21B</b>	APP CRS <b>210°</b>	Rwy ldg TDZE Apt Elev	<b>6801</b> <b>626</b> <b>640</b>
--	------------------------	-----------------------------	---

# RNAV (GPS) Z RWY 21

CHARLOTTESVILLE-ALBEMARLE (CHO)

RNP APCH.	<p>Baro-VNAV NA when using Staunton/Waynesboro/Harrisonburg altimeter setting. For uncompensated Baro-VNAV systems, procedure NA below -16°C or above 54°C.</p> <p>When local altimeter setting not received, use Staunton/Waynesboro/Harrisonburg altimeter setting and increase all DA 130 feet and LPV visibility 1/8 mile.</p>	MISSED APPROACH: Climb to 1100, then climbing left turn to 4000 direct GVE VORTAC and hold.
-----------	--	---

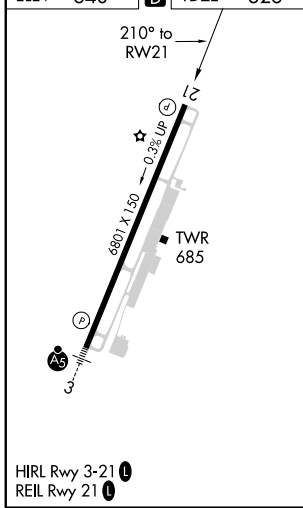
ATIS <b>118.425</b>	POTOMAC APP CON <b>132.85 323.125</b>	CHARLOTTESVILLE TOWER ★ <b>124.5 (CTAF) 0 338.275</b>	GND CON <b>121.9 338.275</b>	UNICOM <b>122.95</b>
------------------------	--	--	---------------------------------	-------------------------



NE-3, 23 MAR 2023 to 20 APR 2023

NE-3, 23 MAR 2023 to 20 APR 2023

ELEV 640	<b>D</b>	TDZE 626
----------	----------	----------



1100	4000	GVE	FOMIV
↑	↻	⬡	
RWY 21		APUSE 2600	3500
6.1 NM		6.3 NM	
GP 3.00°	TCH 50		
CATEGORY	A	B	C
LPV DA	826-1 200 (200-1)		
LNAV/VNAV DA	1588-4 962 (1000-4)		