

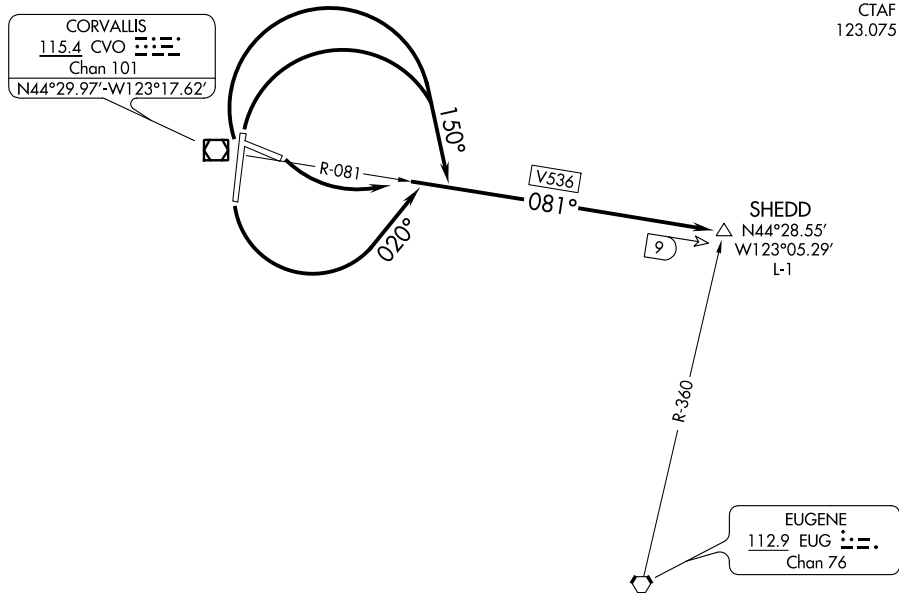
SHEDD FOUR DEPARTURE

AL-782 (FAA)

CORVALLIS MUNI (CVO)
CORVALLIS, OREGON

TOP ALTITUDE:
3000

AWOS-3PT
135.775
CASCADE DEP CON★
127.5 348.7
SEATTLE CENTER
125.8 291.7
CTAF
123.075



TAKEOFF MINIMUMS

Rwys 10, 17: Standard.

Rwy 28: Standard with minimum climb of 329' per NM to 3000.

Rwy 35: 400-2¾ or standard with minimum climb of 211' per NM to 800.

NOTE: Chart not to scale.

DEPARTURE ROUTE DESCRIPTION

TAKEOFF RUNWAY 10: Climbing left turn to 3000 on CVO R-081 to SHEDD INT, thence. . .

TAKEOFF RUNWAY 17: Climbing left turn to 3000 heading 020° and on CVO R-081 to SHEDD INT, thence. . .

TAKEOFF RUNWAYS 28, 35: Climbing right turn to 3000 heading 150° and on CVO R-081 to SHEDD INT, thence. . . .

...on assigned route of flight.

LOST COMMUNICATIONS

If not in contact with air traffic control upon reaching 3000, continue climb to assigned altitude direct CVO VOR/DME. Thence on assigned route of flight.

SHEDD FOUR DEPARTURE

(SHEDD4.SHEDD) 02DEC21

CORVALLIS, OREGON
CORVALLIS MUNI (CVO)

NW-1, 23 MAR 2023 to 20 APR 2023