

WAAS CH 42520 W23A	APP CRS 229°	Rwy Idg TDZE Apt Elev	6333 1663 1663
--	------------------------	-----------------------------	---

RNAV (GPS) RWY 23

ADIRONDACK RGNL (SLK)

RNP APCH - GPS.

⚠ Rwy 23 helicopter visibility reduction below 3/4 SM NA. For uncompensated Baro-VNAV systems, LNAV/VNAV NA below -29°C or above 54°C. When local altimeter setting not received, procedure NA. Circling Rwy 5, 9, 27 NA at night. Inop table does not apply to LPV DA. For inop ALS, increase LNAV/VNAV all Cats visibility to 1 3/8 SM; increase LNAV Cat A/B visibility to 1 SM.

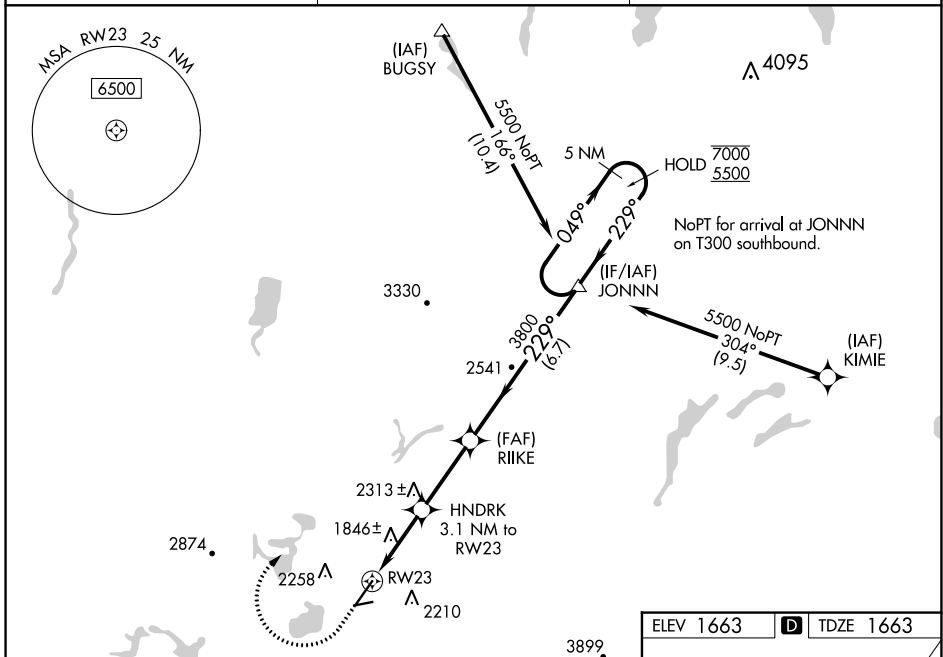


MISSED APPROACH:
Climb to 3500 then climbing right turn to 5500 direct JONNN and hold.

ASOS
124.175

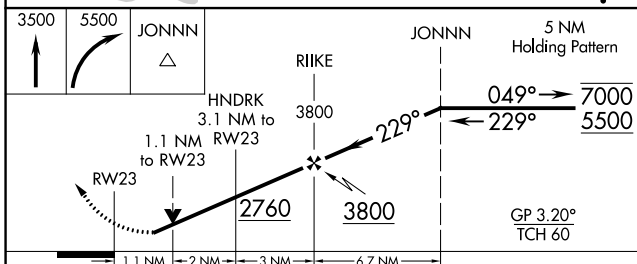
BOSTON CENTER
120.35 342.25

UNICOM
123.0 (CTAF) 0



NE-2, 23 MAR 2023 to 20 APR 2023

NE-2, 23 MAR 2023 to 20 APR 2023



ELEV 1663 **D** TDZE 1663

229° to RW23
5500 X 130
3997 X 100
1700

HIRL Rwy 5-23 **0**
MIRL Rwy 9-27 **0**

CATEGORY	A	B	C	D
LPV DA		1913-3/4	250 (300-3/4)	
LNAV/VNAV DA		2149-1	486 (500-1)	
LNAV MDA		2100-3/4	437 (500-3/4)	
C CIRCLING	2500-1 1/4 837 (900-1 1/4)	2660-1 1/2 997 (1000-1 1/2)	2660-3 997 (1000-3)	2800-3 1137 (1200-3)