

(LBY2.LBY) 20086

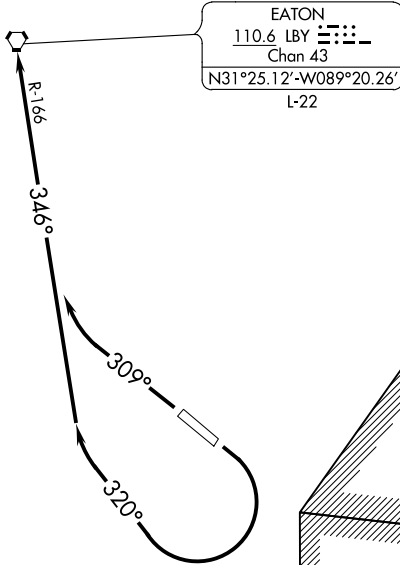
AL-853 (FAA)

HATTIESBURG BOBBY L CHAIN MUNI (HBG)  
HATTIESBURG, MISSISSIPPI

# EATON TWO DEPARTURE

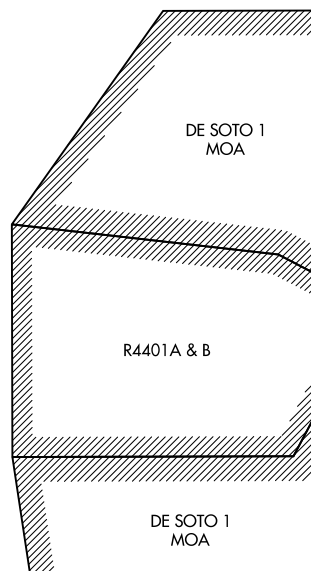
ASOS 135.425  
HOUSTON CENTER  
126.8 327.8  
CTAF 122.8

**TOP ALTITUDE:  
3000**



**TAKEOFF MINIMUMS:**

Rwy 13: ATC climb of 300' per NM to 600.  
Rwy 13: Do not exceed 230K until established on heading 320°.  
Rwy 31: Standard.



SC-4, 23 MAR 2023 to 20 APR 2023

SC-4, 23 MAR 2023 to 20 APR 2023

NOTE: Chart not to scale.



## DEPARTURE ROUTE DESCRIPTION

TAKEOFF RWY 13: Climbing right turn heading 320° and LBV VORTAC R-166 to LBV VORTAC. Thence. . . .

TAKEOFF RWY 31: Climb heading 309° and LBV VORTAC R-166 to LBV VORTAC. Thence. . . .

. . . .maintain 3000 or ATC assigned altitude. Expect clearance to filed altitude 10 minutes after departure.

**EATON TWO DEPARTURE**  
(LBY2.LBY) 21JUL16

HATTIESBURG, MISSISSIPPI  
HATTIESBURG BOBBY L CHAIN MUNI (HBG)