


VORTAC TWF 113.1 Chan 78	APP CRS 248°	Rwy Idg TDZE Apt Elev	8704 4154 4154
--	------------------------	-----------------------------	---

VOR RWY 26

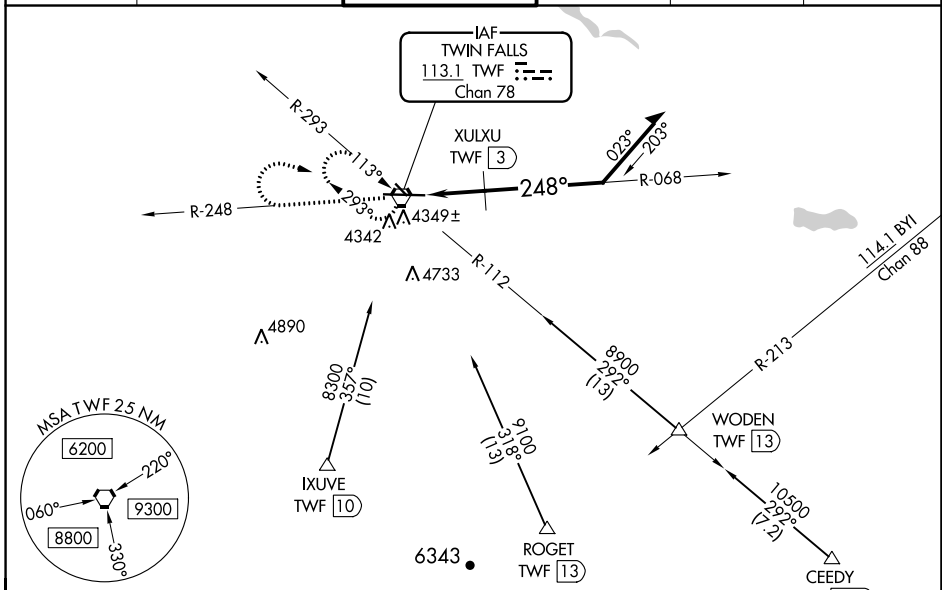
JOSLIN FLD/MAGIC VALLEY RGNL (TWF)

⚠ Night landing: Rwy 30 NA. VDP NA with Jerome altimeter setting. When local altimeter setting not received, use Jerome altimeter setting and increase all MDA 60 feet; increase S-26 Cat A visibility ¼ mile, Cat C/D ½ mile, Circling Cat C ¼ mile, and XULXU FIX S-26 Cat C/D ½ mile. For inop MALS, increase S-26 Cat C/D visibility to 2½ miles; when using Jerome altimeter setting increase XULXU FIX S-26 Cat C/D visibility to 1½ mile.

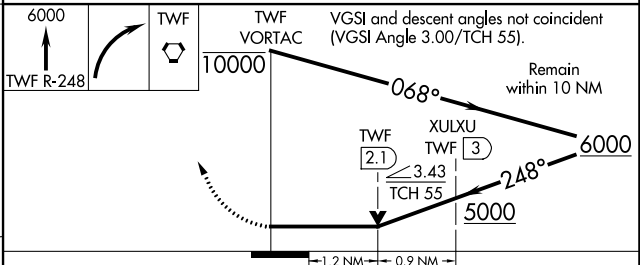
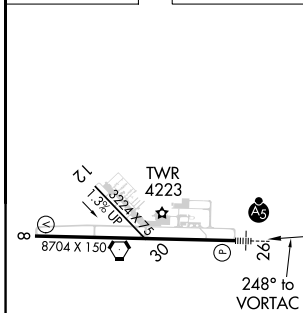
MALS 

MISSED APPROACH: Climb to 6000 on TWF VORTAC R-248 then right turn direct TWF VORTAC and hold.

ASOS 135.025	TWIN FALLS APP CON* 126.7 353.75	TWIN FALLS TOWER* 118.2 (CTAF) 0 317.5	GND CON 121.7	CLNC DEL 123.65	UNICOM 122.95
------------------------	--	--	-------------------------	---------------------------	-------------------------



ELEV 4154	TDZE 4154
------------------	------------------



CATEGORY	A	B	C	D
S-26	5000-½ 846 (900-½)	5000-¾ 846 (900-¾)	5000-1⅞ 846 (900-1⅞)	846 (900-1⅞)
C CIRCLING	5000-1¼ 846 (900-1¼)	5100-2¾ 946 (1000-2¾)	5100-3 946 (1000-3)	5100-3 946 (1000-3)
XULXU FIX MINIMUMS				
S-26	4600-½ 446 (500-½)	446 (500-½)	4600-⅞ 446 (500-⅞)	446 (500-⅞)
C CIRCLING	4700-1 546 (600-1)	4780-1 626 (700-1)	5100-2¾ 946 (1000-2¾)	5100-3 946 (1000-3)

REIL Rwy 8 **0**
HIRL Rwy 8-26 **0**

NW-1, 23 MAR 2023 to 20 APR 2023

NW-1, 23 MAR 2023 to 20 APR 2023