

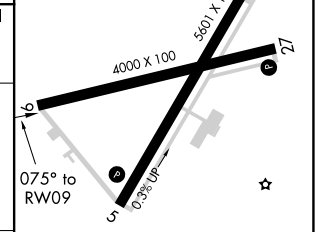
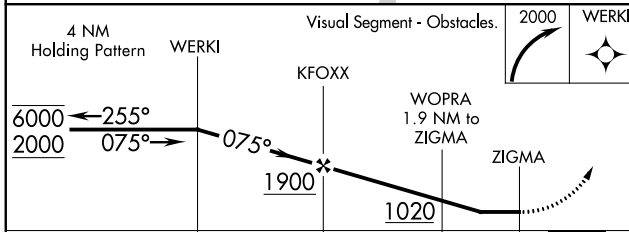
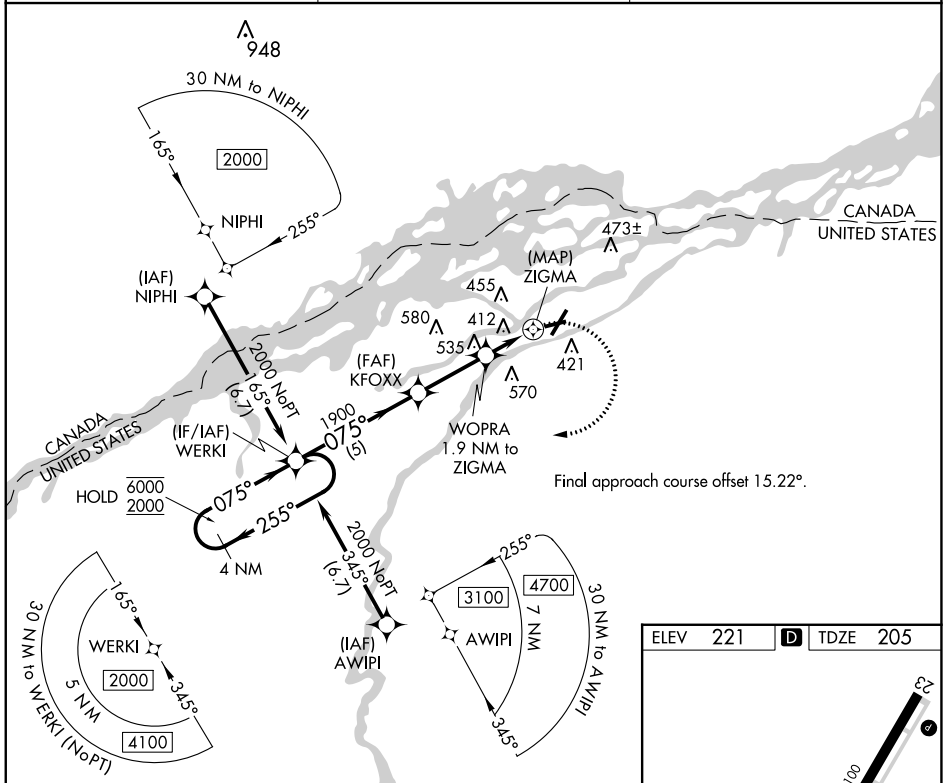
APP CRS	Rwy Idg	<b>4000</b>
<b>075°</b>	TDZE	<b>205</b>
	Apt Elev	<b>221</b>

# RNAV (GPS) RWY 9

MASSENA INTL-RICHARDS FLD (MSS)

RNP APCH - GPS.		MISSED APPROACH: Climbing right turn to 2000 direct WERKI and hold.
<b>▽</b>	Rwy 9 helicopter visibility reduction below 1 SM NA.	
<b>▲</b>	Straight-in Rwy 9 NA at night, Circling Rwy 9, 23, 27 NA at night.	

ASOS <b>128.075</b>	BOSTON CENTER <b>135.25 377.1</b>	UNICOM <b>123.0 (CTAF) 0</b>
------------------------	--------------------------------------	---------------------------------



CATEGORY	A	B	C	D
LNVA MDA	680-1	475 (500-1)	680-1 $\frac{3}{8}$	475 (500-1 $\frac{3}{8}$ )
<b>C</b> CIRCLING	740-1	519 (600-1)	880-1 $\frac{3}{4}$ 659 (700-1 $\frac{3}{4}$ )	880-2 659 (700-2)

REIL Rwy 5, 9 and 27 **0**  
 HIRL Rwy 5-23 **0**  
 MIRL Rwy 9-27 **0**

NE-2, 23 MAR 2023 to 20 APR 2023

NE-2, 23 MAR 2023 to 20 APR 2023