

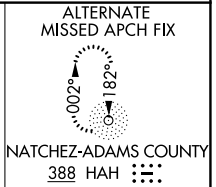
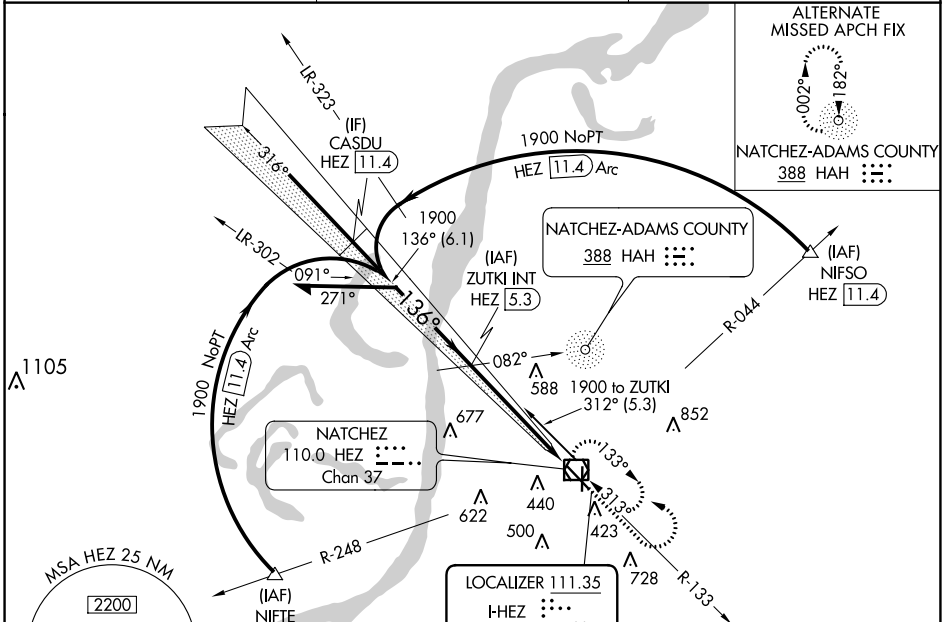
LOC I-HEZ <b>111.35</b>	APP CRS <b>136°</b>	Rwy Idg TDZE Apt Elev	<b>6500</b> <b>266</b> <b>272</b>
----------------------------	------------------------	-----------------------------	---

# ILS or LOC RWY 13

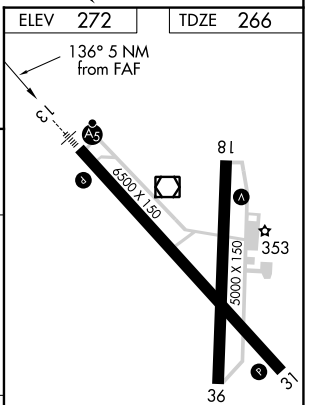
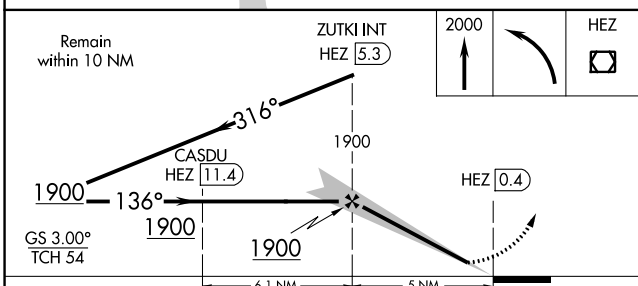
HARDY-ANDERS FLD/NATCHEZ-ADAMS COUNTY (HE/Z)

ADF or DME required for procedure entry.	MALSR 	MISSED APPROACH: Climb to 2000 then left turn direct HEZ VOR/DME and hold.
Circling Rwy 36 NA at night. Inop table does not apply to S-ILS 13 all Cats and S-LOC 13 Cats A/B.		

AWOS-3PT <b>124.675</b>	HOUSTON CENTER <b>120.975 299.6</b>	UNICOM <b>122.8 (CTAF)</b>
----------------------------	--	-------------------------------



ELEV 272	TDZE 266
----------	----------



CATEGORY	A	B	C	D
S-ILS 13		575-1	309 (400-1)	
S-LOC 13		760-1	494 (500-1)	
CIRCLING	760-1 488 (500-1)	820-1 548 (600-1)	1020-2¼ 748 (800-2¼)	1220-3 948 (1000-3)

FAF to MAP 5 NM					
Knots	60	90	120	150	180
Min:Sec	5:00	3:20	2:30	2:00	1:40

SC-4, 23 MAR 2023 to 20 APR 2023

SC-4, 23 MAR 2023 to 20 APR 2023