

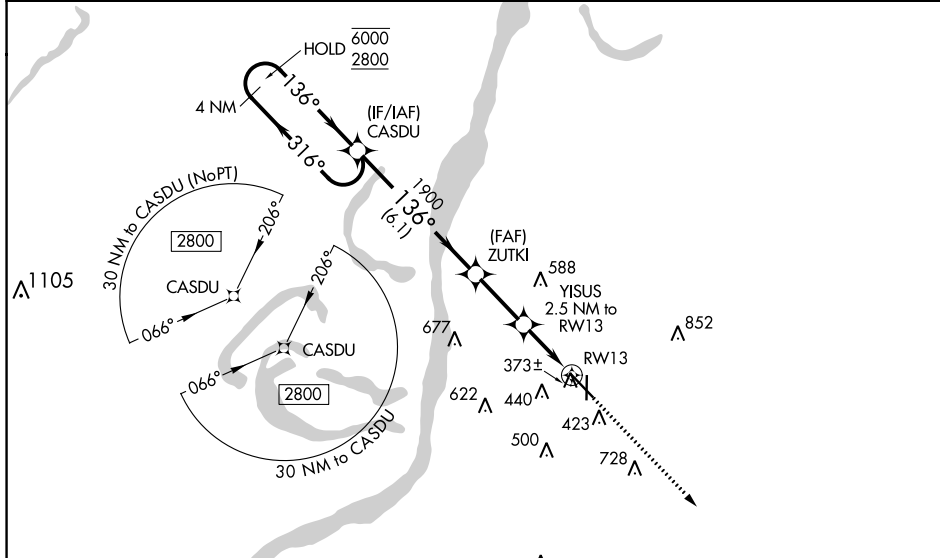
WAAS CH 50505 W13A	APP CRS 136°	Rwy Idg 6500 TDZE 266 Apt Elev 272
--	------------------------	---

RNAV (GPS) RWY 13

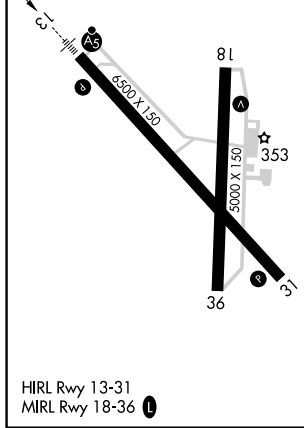
HARDY-ANDERS FLD/NATCHEZ-ADAMS COUNTY (HE/Z)

<p>RNP APCH.</p> <p>⚠ Circling to Rwy 36 NA at night. For uncompensated Baro-VNAV systems, LNAV/VNAV NA below -15° C or above 54° C. For inop ALS, increase LNAV/VNAV all Cats visibility to 7/8 SM and LNAV Cat C and D visibility to 1 1/8 SM.</p>		<p>MALSR</p>	<p>MISSED APPROACH: Climb to 2800 direct WEGRA and hold.</p>
---	--	--------------	--

AWOS-3PT 124.675	HOUSTON CENTER 120.975 299.6	UNICOM 122.8 (CTAF)
----------------------------	--	-------------------------------



ELEV 272	TDZE 266
----------	----------



4 NM Holding Pattern		CASDU	ZUTKI	YISUS	2800 WEGRA
6000 ← 316°		2800 → 136°	1900	1900	2800 WEGRA
GP 3.00° TCH 54					
		6.1 NM	2.5 NM	1.4 NM	1.1 NM
CATEGORY	A	B	C	D	
LPV DA		466-1/2	200 (200-1/2)		
LNAV/VNAV DA		534-1/2	268 (300-1/2)		
LNAV MDA	680-1/2	414 (500-1/2)	680-3/4	414 (500-3/4)	
C CIRCLING	740-1 468 (500-1)	800-1 528 (600-1)	1020-2 1/4 748 (800-2 1/4)	1220-3 948 (1000-3)	

SC-4, 23 MAR 2023 to 20 APR 2023

SC-4, 23 MAR 2023 to 20 APR 2023