

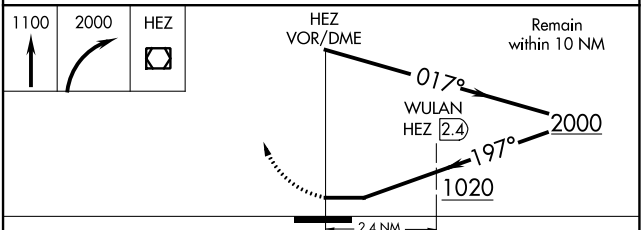
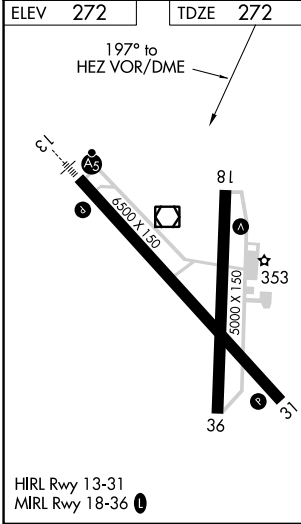
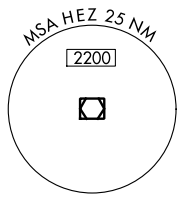
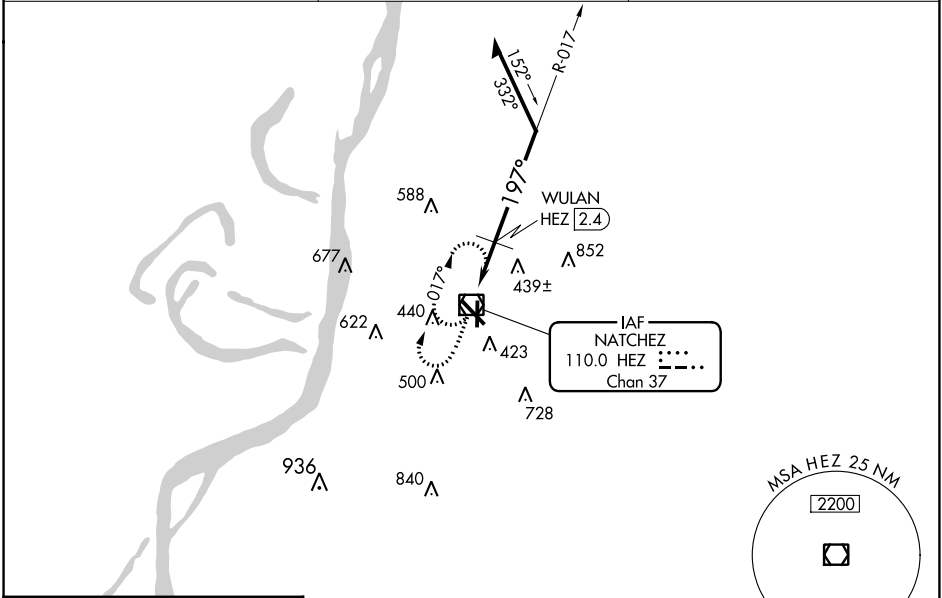
VOR/DME HEZ 110.0 Chan 37	APP CRS 197°	Rwy Idg TDZE Apt Elev	5000 272 272
---	------------------------	-----------------------------	---

VOR RWY 18

HARDY-ANDERS FLD/NATCHEZ-ADAMS COUNTY (HEZ)

<p>⚠ Circling Rwy 36 NA at night. Rwy 18 helicopter visibility reduction below 1 SM NA. Straight-in and Circling Rwy 18 NA at night.</p>	<p>MISSED APPROACH: Climb to 1100 then climbing right turn to 2000 in HEZ VOR/DME holding pattern, continue climb-in-hold to 2000.</p>
---	---

AWOS-3PT 124.675	HOUSTON CENTER 120.975 299.6	UNICOM 122.8 (CTAF) ①
----------------------------	--	--



CATEGORY	A	B	C	D
S-18	1020-1 748 (800-1)	1020-1¼ 748 (800-1¼)	1020-2 748 (800-2)	1220-3 948 (1000-3)
C CIRCLING	1020-1 748 (800-1)	1020-1¼ 748 (800-1¼)	1020-2¼ 748 (800-2¼)	1220-3 948 (1000-3)
WULAN FIX MINIMUMS				
S-18	700-1	428 (500-1)	700-1¼	428 (500-1¼)
C CIRCLING	740-1 468 (500-1)	820-1 548 (600-1)	1020-2¼ 748 (800-2¼)	1220-3 948 (1000-3)

SC-4, 23 MAR 2023 to 20 APR 2023

SC-4, 23 MAR 2023 to 20 APR 2023