

WAAS CH 99330 W16A	APP CRS 158°	Rwy Idg TDZE Apt Elev	4800 213 213
--	------------------------	-----------------------------	---

RNAV (GPS) RWY 16

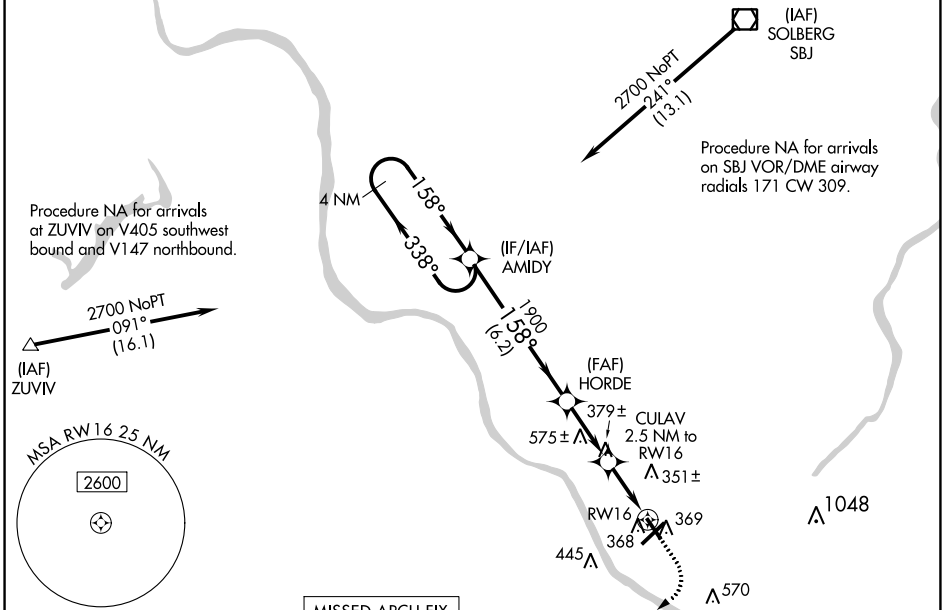
TRENTON MERCER (TTN)

Night Landing: Rwy 34 operational VGSI required, remain on or above VGSI glidepath until threshold. Baro-VNAV NA when using Northeast Philadelphia altimeter setting. For uncompensated Baro-VNAV systems, LNAV/VNAV NA below -1.5°C (5°F) or above 54°C (130°F). DME/DME RNP-0.3 NA.

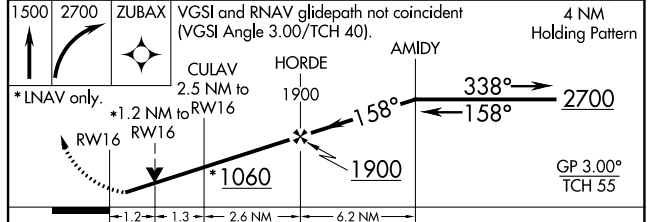
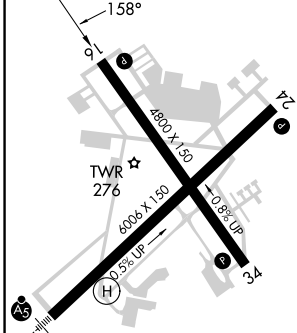
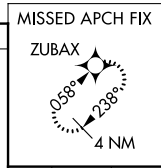
Helicopter visibility reduction below 3/4 SM NA. When local altimeter setting not received use Northeast Philadelphia altimeter setting; increase LPV DA to 510 feet and all Cats visibility: 3/8 SM, LNAV/VNAV DA to 576 feet; increase all MDA 60 feet and LNAV Cat C/D visibility 3/8 SM and Circling Cat C visibility 1/2 SM.

MISSED APPROACH: Climb to 1500 then climbing right turn to 2700 direct ZUBAX and hold.

ATIS 126.775	PHILADELPHIA APP CON 123.8 291.7	TRENTON TOWER ★ 120.7 (CTAF) 0 257.8	GND CON 121.9 257.8	CLNC DEL 121.9 257.8	UNICOM 122.95
------------------------	--	--	-------------------------------	--------------------------------	-------------------------



ELEV 213	D	TDZE 213
-----------------	----------	-----------------



CATEGORY	A	B	C	D
LPV DA	463-3/4 250 (300-3/4)			
LNAV/VNAV DA	529-1 316 (400-1)			
LNAV MDA	640-1	427 (500-1)	640-1 1/4	427 (500-1 1/4)
CIRCLING	680-1 467 (500-1)		760-1 1/2	960-2 1/2
			547 (600-1 1/2)	747 (800-2 1/2)

HIRL Rwy 6-24 and 16-34
REIL Rwy 16, 24 and 34

NE-2, 23 MAR 2023 to 20 APR 2023

NE-2, 23 MAR 2023 to 20 APR 2023