

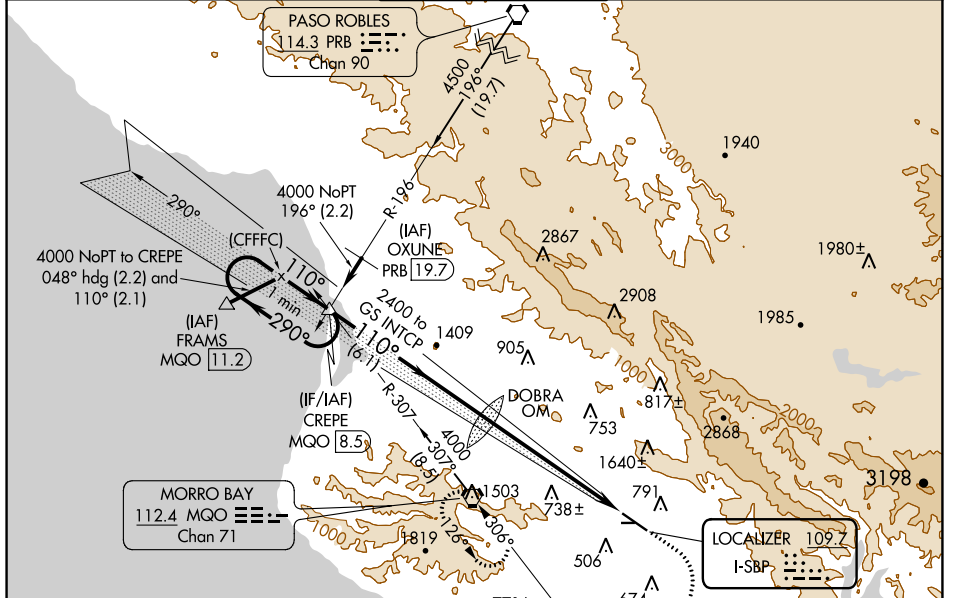
LOC I-SBP 109.7	APP CRS 110°	Rwy ldg TDZE Apt Elev	5300 198 212
---------------------------	------------------------	-----------------------------	---

ILS RWY 11

SAN LUIS COUNTY RGNL (SBP)

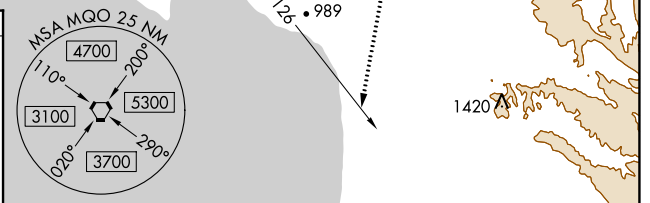
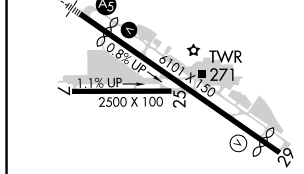
	MALS	MISSED APPROACH: Climb to 900 then climbing right turn to 3300 on heading 175° and on MQO VORTAC R-126 to MQO VORTAC and hold, continue climb-in-hold to 3300.

ATIS* 120.6	SANTA BARBARA APP CON* 127.725 244.575	SAN LUIS TOWER* 124.0 (CTAF) 379.9	GND CON 121.6	UNICOM 122.95
-----------------------	--	--	-------------------------	-------------------------



When GS not used, use LOC RWY 11 procedure.

ELEV 212	D	TDZE 198
----------	----------	----------



One Minute Holding Pattern	CREPE INT MQO 8.5	900	3300	MQO R-126	MQO
----------------------------	-------------------	-----	------	-----------	-----

4000	← 290°	→ 110°	→ 110°	→ 2400	→ DOBRA OM 2186
GS 3.00° TCH 49		6.9 NM		6.1 NM	

CATEGORY	A	B	C	D
S-ILS 11	398-1/2		200 (200-1/2)	

REIL Rwy 29
HIRL Rwy 11-29

SW-3, 23 MAR 2023 to 20 APR 2023

SW-3, 23 MAR 2023 to 20 APR 2023