

WAAS CH 65900 W04A	APP CRS 044°	Rwy Idg TDZE Apt Elev	5200 83 83
--	------------------------	-----------------------------	---------------------------------------

RNAV (GPS) RWY 4

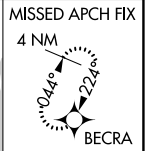
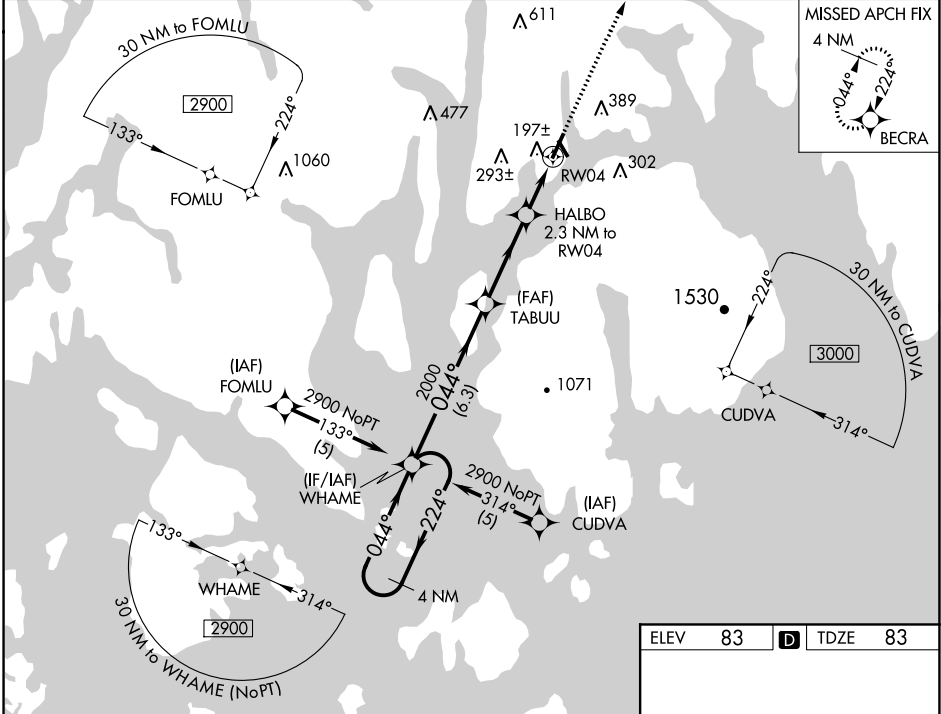
HANCOCK COUNTY/BAR HARBOR (BHB)

RNP APCH - GPS

Baro-VNAV NA when using Bangor altimeter setting. For uncompensated Baro-VNAV systems, LNAV/VNAV NA below -15°C or above 49°C. When local altimeter setting not received, use Bangor altimeter setting and increase LPV DA to 416 feet, increase LNAV/VNAV DA to 547 feet, and all visibilities ¼ SM. Increase all MDAs 100 feet and LNAV visibility Cats C/D, and Circling visibility Cats C/D ¼ SM. Circling Rwy 17, 35 NA at night. Rwy 4 helicopter visibility reduction below ¼ SM NA.

MISSED APPROACH:
Climb to 3000 direct
BECRA and hold.

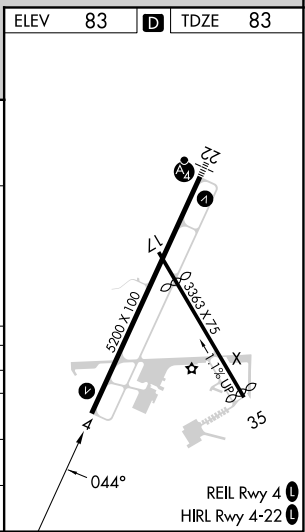
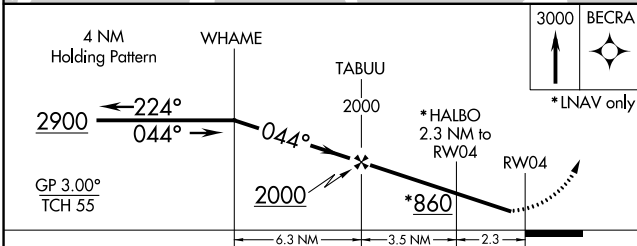
AWOS-3PT 118.35	BANGOR APP CON 133.6 284.65	CLNC DEL 119.9	UNICOM 123.0 (CTAF)	122.7
---------------------------	---------------------------------------	--------------------------	-------------------------------	--------------



NE-1, 23 MAR 2023 to 20 APR 2023

NE-1, 23 MAR 2023 to 20 APR 2023

ELEV 83		TDZE 83
---------	--	---------



CATEGORY	A	B	C	D
LPV DA		333-¾	250 (300-¾)	
LNAV/VNAV DA		464-1⅞	381 (400-1⅞)	
LNAV MDA	480-1	397 (400-1)	480-1⅞	397 (400-1⅞)
CIRCLING	600-1 517 (600-1)	720-1 637 (700-1)	720-1¾ 637 (700-1¾)	840-2½ 757 (800-2½)