

MILTON, FLORIDA

# COPTER TACAN 004

TACAN NSE Chan <b>70</b>	APCH CRS <b>004°</b>	Rwy ldg TDZE Arprt Elev	<b>5996</b> <b>N/A</b> <b>177</b>
-----------------------------	-------------------------	-------------------------------	---

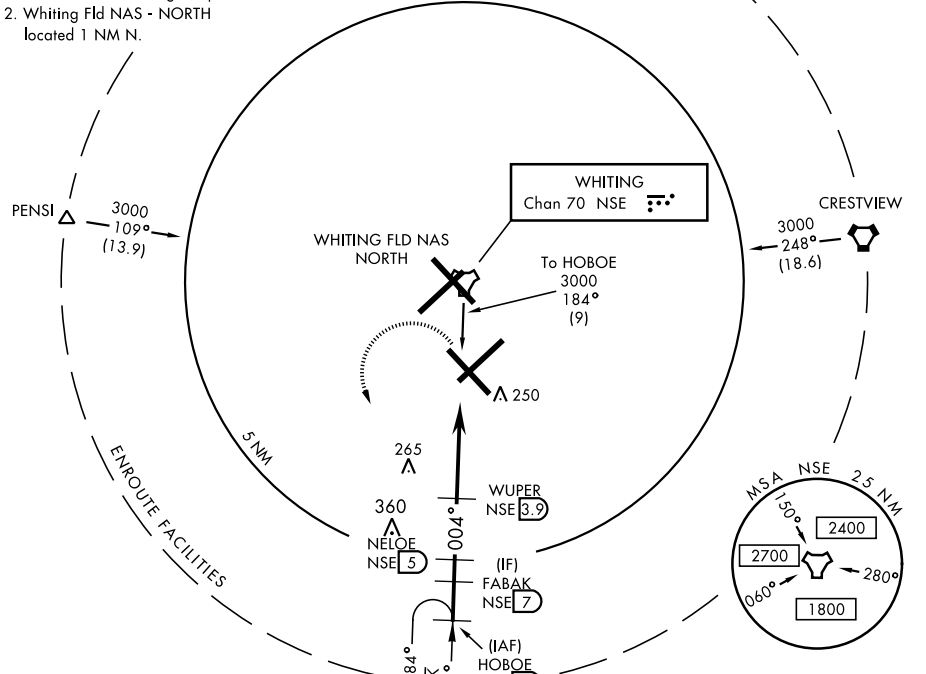
AL-1909 [USN]

WHITING FLD NAS - SOUTH (KNDZ)

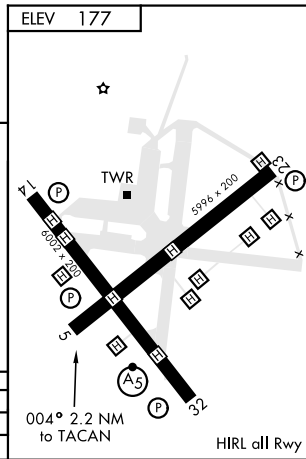
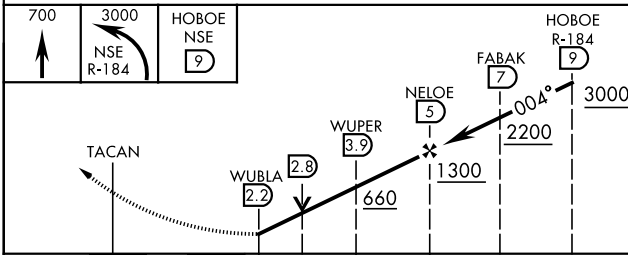
<p>▼ Maximum airspeed 90 KIAS.</p>		<p>MISSED APPROACH: Climb to 700. Then climbing left turn to 3000. Intercept NSE TACAN R-184 to HOBEO and hold. Contact Pensacola Approach Control.</p>			
ATIS ★ <b>273.575</b>	PENSACOLA APP CON <b>124.85 385.4</b>	SOUTH WHITING TOWER ★ <b>121.4 348.675</b>	GND CON <b>317.65</b>	CLNC DEL <b>355.6</b>	ASR/ PAR

**CAUTION:**

- Intensive VFR training all quadrants.
- Whiting Fld NAS - NORTH located 1 NM N.



EMERG SAFE ALT 100 NM 3500



CATEGORY	COPTER	
H-004	560-½	383 (400-½)
CIRCLING	NOT AUTHORIZED	

MILTON, FLORIDA  
Amdt 6 10SEP20

30°42'N-87°01'W

WHITING FLD NAS - SOUTH (KNDZ)

# COPTER TACAN 004

SE-3, 23 MAR 2023 to 20 APR 2023

SE-3, 23 MAR 2023 to 20 APR 2023