

MILTON, FLORIDA

ILS Y or LOC/DME RWY 32

LOC/DME I-NDZ 110.55 Chan 42(Y)	APCH CRS 319°	Rwy Ildg TDZE Arprt Elev 6002 172 177
---	-------------------------	---

AL-1909 [UN]

WHITING FLD NAS - SOUTH (KNDZ)

TACAN Required.

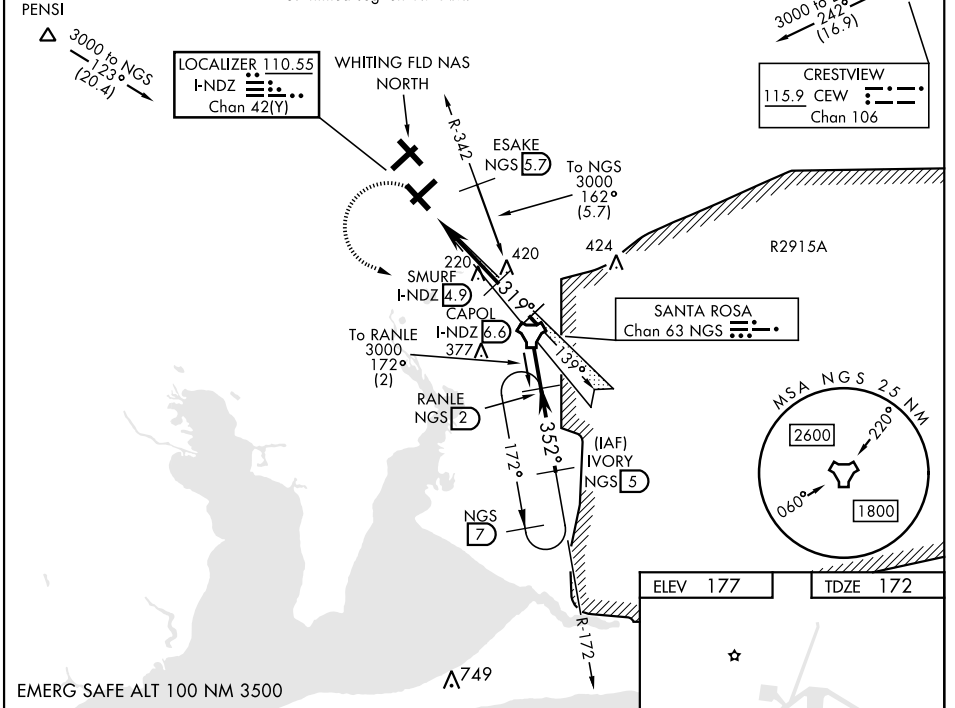
▼ *When ALS inop, increase vis to ¾ mile.
 **When ALS inop, increase vis to 1 mile.
 *** Circling not authorized NE of Rwy 14-32 and NW of Rwy 5-23.



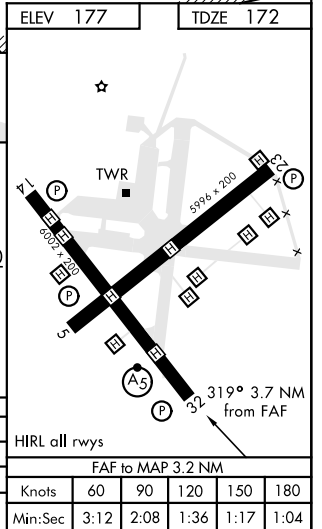
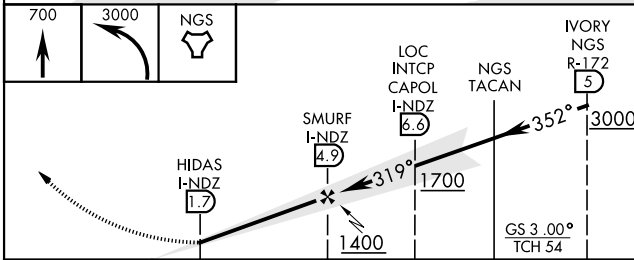
MISSED APPROACH: Climb to 700, then climbing left turn to 3000 direct NGS TACAN. Then via R-172 to RANLE and hold continue climb in hold. Contact Pensacola Approach Control.

ATIS 273.575	PENSACOLA APP CON 124.85 385.4	SOUTH WHITING TOWER 121.4 348.675	GND CON 317.65	CLNC DEL 355.6	ASR/PAR
------------------------	--	---	--------------------------	--------------------------	---------

- CAUTION: 1. Intensive VFR student training all quadrants.
 2. Whiting FLD NAS - NORTH located 1 NM N.
 3. Inrtmed seg len 1.7 NM.



EMERG SAFE ALT 100 NM 3500



CATEGORY	A	B	C	D
S-ILS 32*		372-½	200 (200-½)	
S-LOC 32**		480-½	308 (400-½)	
*** CIRCLING	620-1 443 (500-1)	640-1 463 (500-1)	660-1½ 483 (500-1½)	740-2 563 (600-2)

HIRL all rwys

FAF to MAP 3.2 NM					
Knots	60	90	120	150	180
Min:Sec	3:12	2:08	1:36	1:17	1:04

MILTON, FLORIDA
Amdt 6 12AUG21

30° 42' N-87° 01' W

WHITING FLD NAS - SOUTH (KNDZ)

ILS Y or LOC/DME RWY 32

SE-3, 23 MAR 2023 to 20 APR 2023

SE-3, 23 MAR 2023 to 20 APR 2023