

MILTON, FLORIDA

ILS Z or RNAV (GPS) RWY 32

LOC/DME I-NDZ 110.55 Chan 42(Y)	APCH CRS 319°	Rwy Ildg TDZE Arprt Elev 6002 172 177
--	-------------------------	---

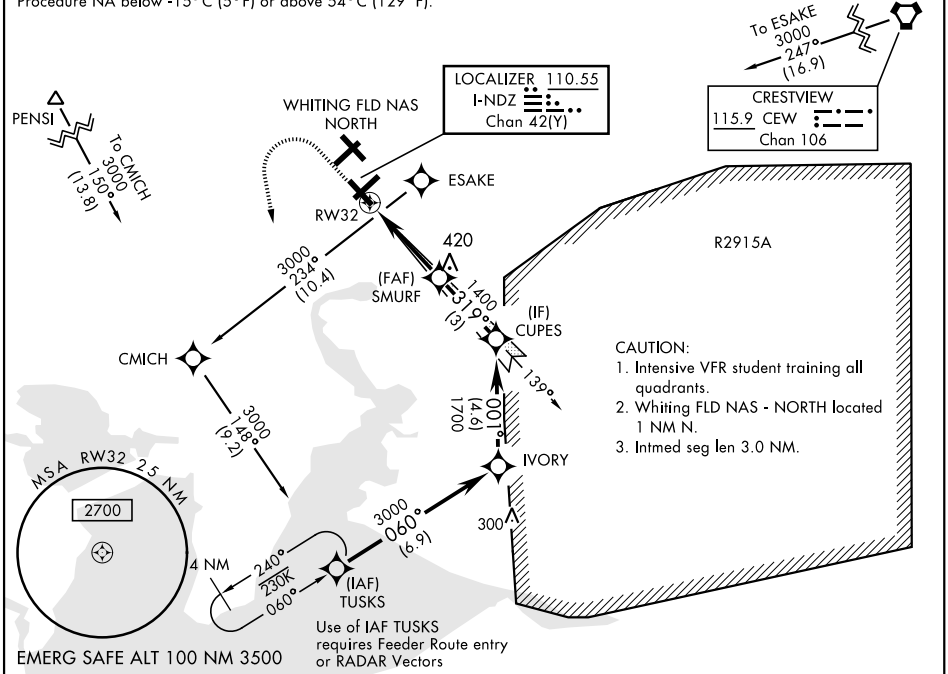
AL-1909 [USN]

WHITING FLD NAS - SOUTH (KNDZ)

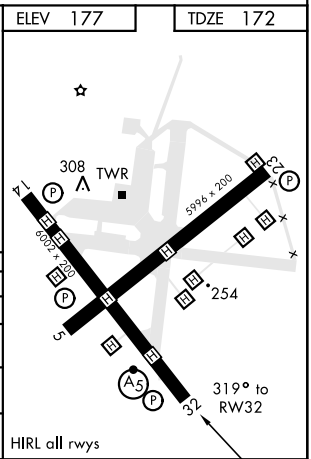
RNP APCH: RNAV 1 - GPS.	MALSRL 	MISSED APPROACH: Climb to 800. Then climbing left turn to 3000, direct to TUSKS and hold. Contact Pensacola Approach Control.
<p>▼ *When ALS inop, increase vis to 3/4 mile.</p> <p>** When ALS inop, increase vis to 1 mile.</p> <p>*** Circling not authorized in sector NE of Rwy 14-32 and NW of Rwy 5-23.</p>		

ATIS ★ 273.575	PENSACOLA APP CON 124.85 385.4	SOUTH WHITING TOWER ★ 121.4 348.675	GND CON 317.65	CLNC DEL 355.6	ASR/PAR
--------------------------	--	--	--------------------------	--------------------------	---------

For uncompensated Baro-VNAV systems,
Procedure NA below -15°C (5°F) or above 54°C (129°F).



 800 3000 TUSKS	 LOC intcp CUPES IVORY TUSKS			
 RW32 SMURF CUPES IVORY TUSKS	0.9 NM to RW32 3.7 NM 1400 1700 3000 GS 3.00° TCH 54	319° 001° 060° 3000	3000 3000	3000 3000
CATEGORY	A	B	C	D
S-ILS 32 *	372-1/2		200 (200-1/2)	
LNAV/ * VNAV DA	422-1/2	250 (300-1/2)	425-1/2 253 (300-1/2)	
LNAV MDA **	520-1/2 348 (400-1/2)		520-5/8 348 (400-5/8)	
CIRCLING ***	620-1 443 (500-1)	640-1 463 (500-1)	660-1 1/2 483 (500-1 1/2)	740-2 563 (600-2)



SE-3, 23 MAR 2023 to 20 APR 2023

SE-3, 23 MAR 2023 to 20 APR 2023

MILTON, FLORIDA
Amdt 7 12AUG21

30°42'N-87°01'W

WHITING FLD NAS - SOUTH (KNDZ)

ILS Z or RNAV (GPS) RWY 32