

RNAV (GPS) RWY 14

BOIRE FLD (ASH)

WAAS CH 97730 W14A	APP CRS 139°	Rwy Idg 5650 TDZE 200 Apt Elev 200
--	------------------------	---

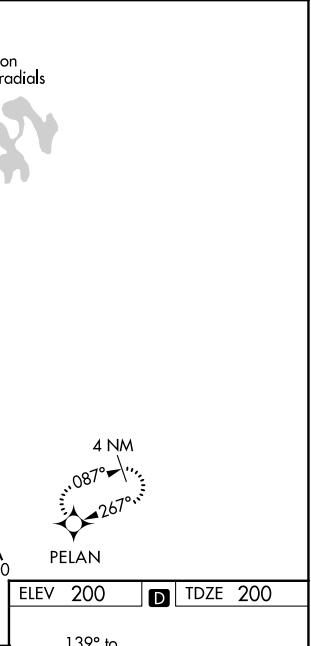
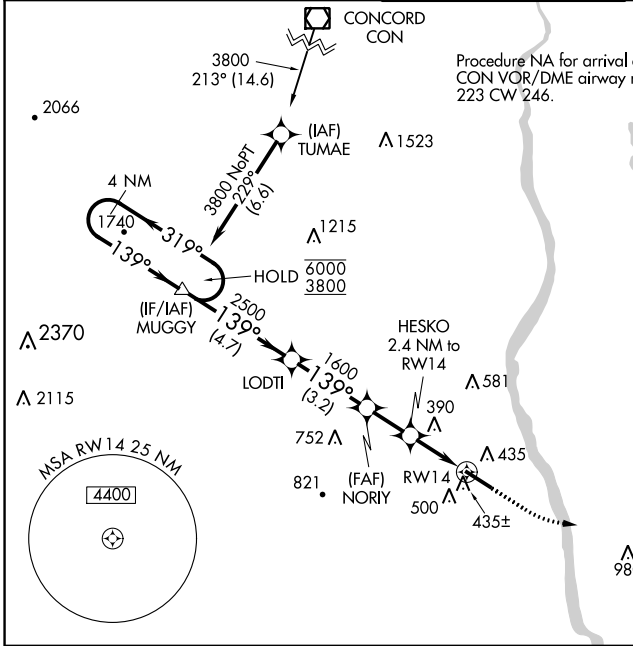
RNP APCH.

▼ For uncompensated Baro-VNAV systems, LNAV/VNAV NA below -15°C or above 54°C. For inop ALS, increase LNAV Cat C/D visibility to 1 1/8 SM.

MALSRL

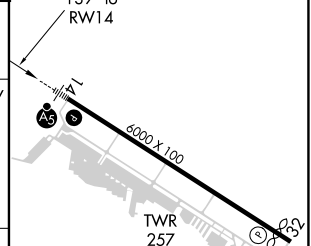
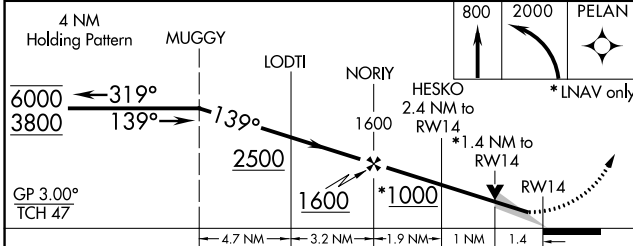
MISSED APPROACH:
Climb to 800 then climbing left turn to 2000 direct PELAN and hold.

ATIS 125.1	BOSTON APP CON 124.9 269.075	NASHUA TOWER * 133.2 (CTAF)	GND CON 121.8	CLNC DEL 121.8
----------------------	--	---------------------------------------	-------------------------	--------------------------



NE-1, 23 MAR 2023 to 20 APR 2023

NE-1, 23 MAR 2023 to 20 APR 2023



CATEGORY	A	B	C	D
LPV DA		400-1/2	200 (200-1/2)	
LNAV/VNAV DA		596-5/8	396 (400-5/8)	
LNAV MDA	700-1/2	500 (500-1/2)	700-1	500 (500-1)
CIRCLING	820-1 620 (700-1)	840-1 640 (700-1)	900-2 700 (700-2)	1000-2 1/2 800 (800-2 1/2)

ELEV 200	TDZE 200
HIRL Rwy 14-32	
REIL Rwy 32	