

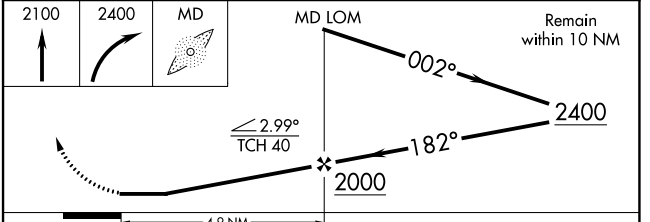
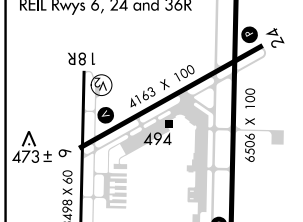
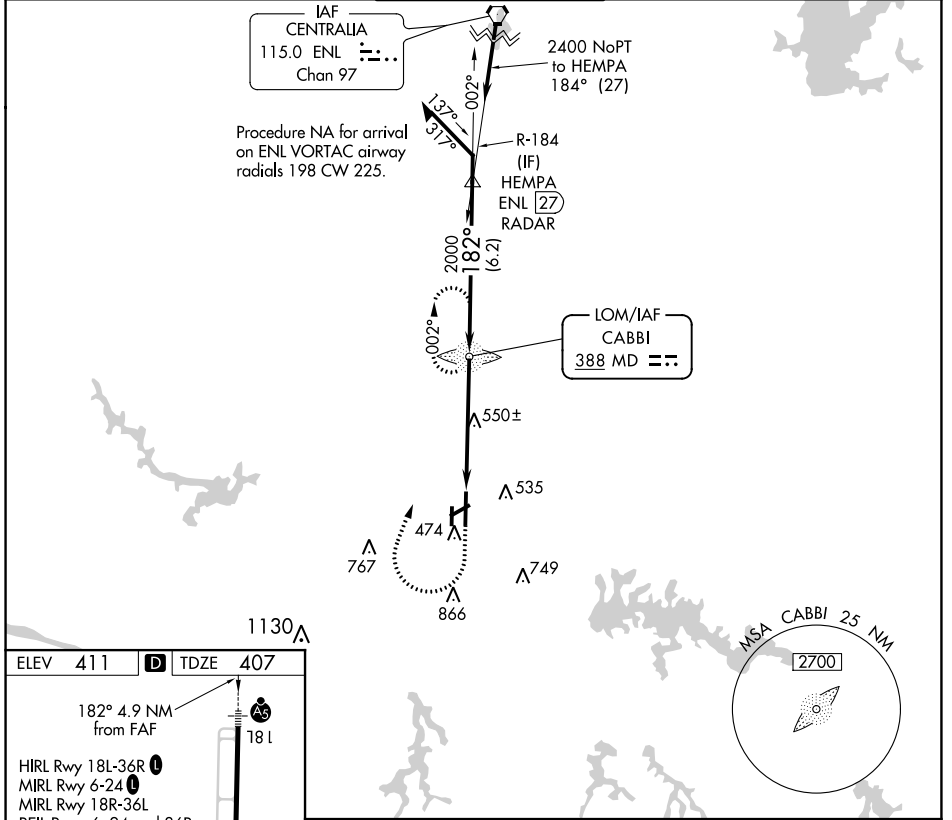
LOM MD 388	APP CRS 182°	Rwy ldg 6506 TDZE 407 Apt Elev 411
----------------------	------------------------	---

NDB RWY 18L

SOUTHERN ILLINOIS (MDH)

<p>⚠ Circling Rwy 6, 36L NA at night. For inop ALS, increase S-18L Cat A/B visibility to 1 SM.</p>	<p>MALSR</p>	<p>MISSED APPROACH: Climb to 2100 then climbing right turn to 2400 direct CABBI LOM and hold.</p>
---	--------------	---

ATIS 119.725	KANSAS CITY CENTER 127.475 346.275	SOUTHERN TOWER ★ 125.35 (CTAF) 322.4	GND CON 121.8	UNICOM 122.95
------------------------	--	--	-------------------------	-------------------------



ELEV 411	D	TDZE 407															
<p>HIRL Rwy 18L-36R MIRL Rwy 6-24 REIL Rws 6, 24 and 36R</p>																	
<table border="1"> <tr> <th>CATEGORY</th> <th>A</th> <th>B</th> <th>C</th> <th>D</th> </tr> <tr> <td>S-18L</td> <td>860-³/₄</td> <td>453 (500-³/₄)</td> <td>860-⁷/₈</td> <td>453 (500-⁷/₈)</td> </tr> <tr> <td>C CIRCLING</td> <td>900-1 489 (500-1)</td> <td>920-1 509 (600-1)</td> <td>1180-2¹/₄ 769 (800-2¹/₄)</td> <td>1180-2¹/₂ 769 (800-2¹/₂)</td> </tr> </table>			CATEGORY	A	B	C	D	S-18L	860- ³ / ₄	453 (500- ³ / ₄)	860- ⁷ / ₈	453 (500- ⁷ / ₈)	C CIRCLING	900-1 489 (500-1)	920-1 509 (600-1)	1180-2 ¹ / ₄ 769 (800-2 ¹ / ₄)	1180-2 ¹ / ₂ 769 (800-2 ¹ / ₂)
CATEGORY	A	B	C	D													
S-18L	860- ³ / ₄	453 (500- ³ / ₄)	860- ⁷ / ₈	453 (500- ⁷ / ₈)													
C CIRCLING	900-1 489 (500-1)	920-1 509 (600-1)	1180-2 ¹ / ₄ 769 (800-2 ¹ / ₄)	1180-2 ¹ / ₂ 769 (800-2 ¹ / ₂)													

EC-3, 23 MAR 2023 to 20 APR 2023

EC-3, 23 MAR 2023 to 20 APR 2023