

NC-1, 23 MAR 2023 to 20 APR 2023

NOTE: RADAR required.  
TAKEOFF MINIMUMS  
Rwys 10L/R, 18, 28L/R, 36: Standard.

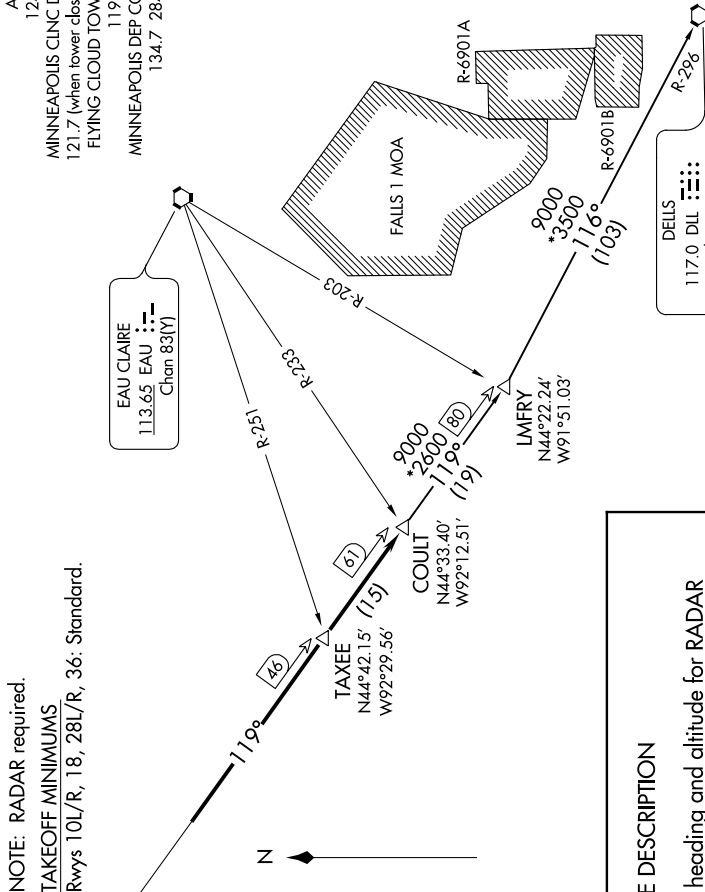
ATIS  
124.9  
MINNEAPOLIS CLINC DEL  
121.7 (when tower closed)  
FLYING CLOUD TOWER\*  
119.15  
MINNEAPOLIS DEP CON  
134.7 284.7

EAU CLAIRE  
113.65 EAU  
Chan 83(Y)

GOPHER  
117.3 GEP  
Chan 120

FLYING CLOUD  
117.7 FCM  
Chan 124

DELLS  
117.0 DLL  
Chan 117  
N43°33.05'-W89°45.82'  
L-28, H-5



DEPARTURE ROUTE DESCRIPTION

TAKEOFF ALL RUNWAYS: Fly assigned heading and altitude for RADAR vectors to intercept GEP R-119 to COULT INT/GEP 61 DME, thence . . . .

. . . . on transition or assigned route. Expect clearance to filed altitude/ flight level 10 (ten) minutes after departure.

DELLS TRANSITION (COULT7.DLL): From over COULT INT on GEP R-119 to LMFRY INT, then on DLL R-296 to DLL VORTAC.

NOTE: Chart not to scale.

NC-1, 23 MAR 2023 to 20 APR 2023