

WAAS CH <b>82635</b> <b>W36A</b>	APP CRS <b>003°</b>	Rwy Idg <b>2690</b> TDZE <b>905</b> Apt Elev <b>906</b>
--	------------------------	---

# RNAV (GPS) RWY 36

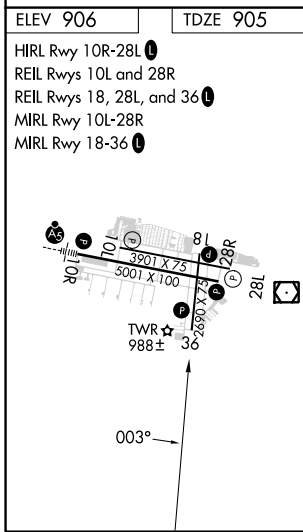
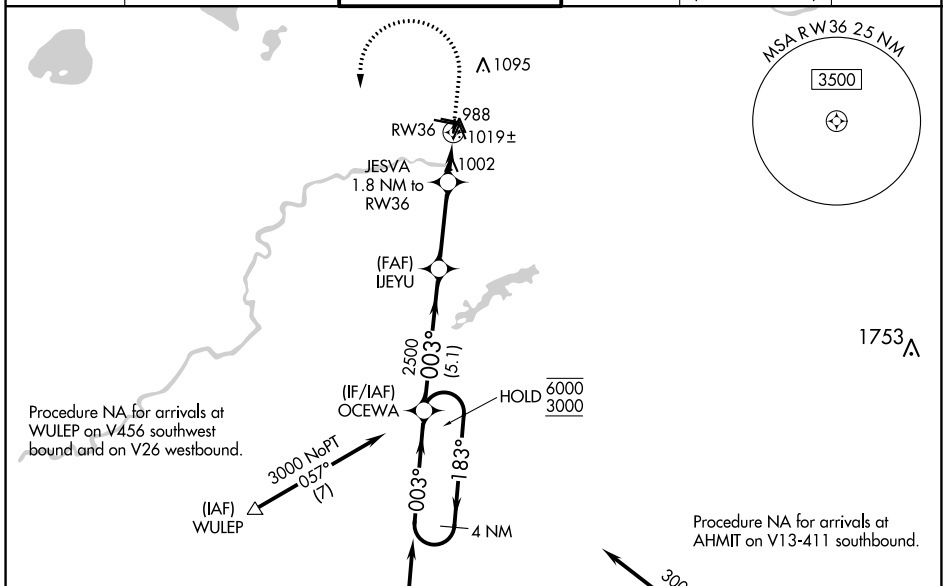
FLYING CLOUD (FCM)

RNP APCH.

**⚠** Helicopter visibility reduction below 1 SM NA. When local altimeter setting not received, use Minneapolis St Paul Intl/Wold-Chamberlain altimeter setting and increase all MDA 40 feet and increase LP and LNAV Cat C visibility 1/8 mile. Straight-in Rwy 36 at night, and Circling Rwy 18, 36 at night, operational VGSI required, remain on or above VGSI glidepath until threshold.

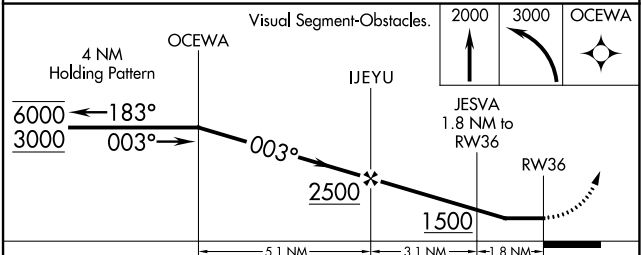
MISSED APPROACH: Climb to 2000 then climbing left turn to 3000 direct OCEWA and hold.

ATIS <b>124.9</b>	MINNEAPOLIS APP CON <b>134.7 284.7</b>	FLYING CLOUD TOWER * <b>119.15 (CTAF) 0</b>	GND CON <b>121.7</b>	CLNC DEL <b>121.7</b> (When twr closed)	UNICOM <b>122.95</b>
----------------------	---	--	-------------------------	---	-------------------------



ELEV 906 TDZE 905

HIRL Rwy 10R-28L  
REIL Rwy 10L and 28R  
REIL Rwy 18, 28L, and 36  
MIRL Rwy 10L-28R  
MIRL Rwy 18-36



CATEGORY	A	B	C	D
LP MDA		1260-1	355 (400-1)	NA
LNAV MDA		1280-1	375 (400-1)	NA
<b>C</b> CIRCLING	1320-1 414 (500-1)	1440-1 534 (600-1)	1440-1½ 534 (600-1½)	NA

NC-1, 23 MAR 2023 to 20 APR 2023

NC-1, 23 MAR 2023 to 20 APR 2023