

NC-1, 23 MAR 2023 to 20 APR 2023

**DEPARTURE ROUTE DESCRIPTION**

**TAKEOFF ALL RUNWAYS:** Fly assigned heading and altitude for RADAR vectors to MSP VOR/DME then on MSP R-138 to cross JEDET INT/MSP 34 DME, at or above 4000; then on ODI R-301 to ZMBRO INT/ODI 50 DME, thence . . . . .

. . . . .on assigned transition or route. Expect clearance to filed altitude/flight level 10 (ten) minutes after departure.

**NODINE TRANSITION [ZMBRO7.ODI]:** From over ZMBRO on ODI R-301 to ODI VORTAC.

**TOP ALTITUDE:  
(JETS) 7000/  
(PROPS) 5000**

ATIS 124.9  
MINNEAPOLIS CLNC DEL 121.7 (when tower closed)  
FLYING CLOUD TOWER ★ 119.15  
MINNEAPOLIS DEP CON 134.7 284.7

MINNEAPOLIS  
115.3 MSP  
Chan 100  
N44°53.79'-W93°14.19'

**TAKEOFF MINIMUMS**  
Rwys 10L/R, 18, 28L/R, 36: Standard.

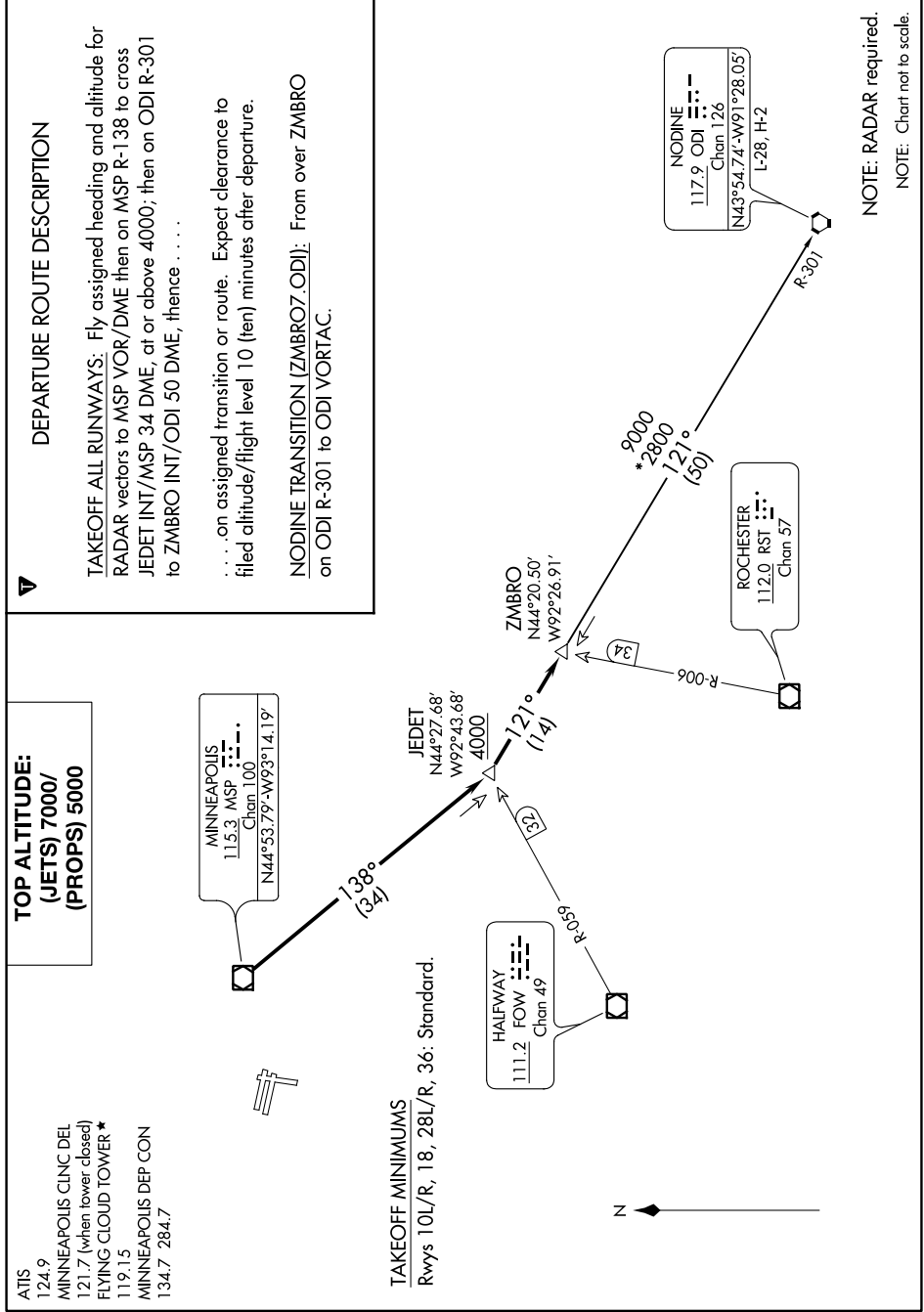
HALFWAY  
111.2 FOW  
Chan 49

JEDET  
N44°27.68'  
W92°43.68'  
4000

ZMBRO  
N44°20.50'  
W92°26.91'

NODINE  
117.9 ODI  
Chan 126  
N43°54.74'-W91°28.05'

ROCHESTER  
112.0 RST  
Chan 57



**NOTE: RADAR required.**  
NOTE: Chart not to scale.

NC-1, 23 MAR 2023 to 20 APR 2023