

VOR/DME EWO 110.8 Chan 45	APP CRS 132°	Rwy Idg TDZE Apt Elev N/A N/A 921
---	------------------------	---

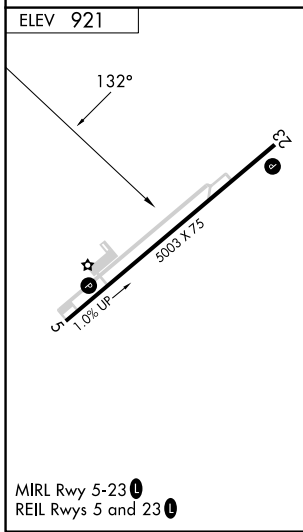
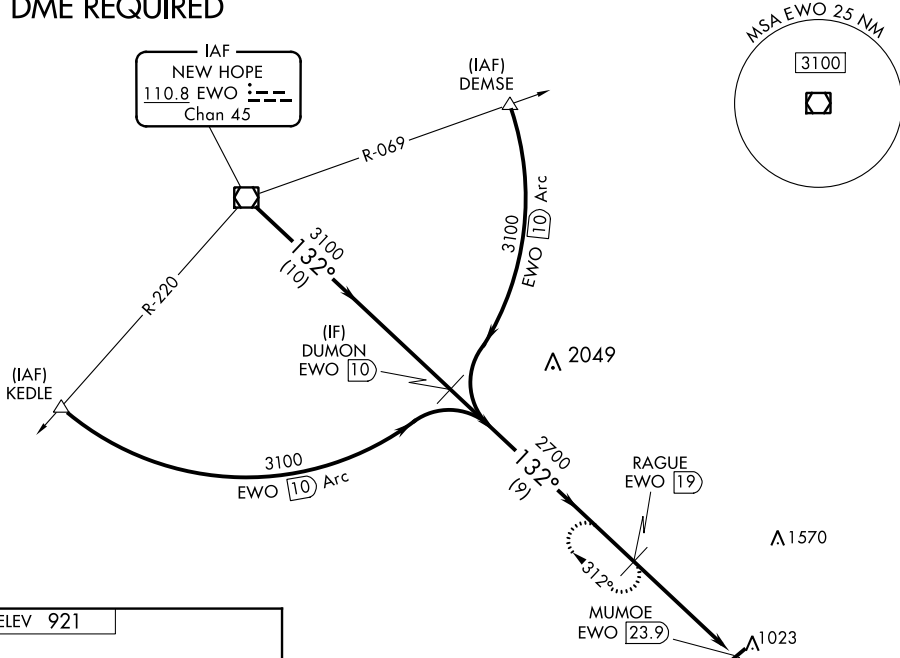
VOR/DME-A
TAYLOR COUNTY (AAS)

NA When local altimeter setting not received, use Somerset altimeter setting: increase all MDA 100 feet; increase Cat C visibility 1/4 mile and Cat D visibility 1/2 mile.

MISSED APPROACH: Climbing right turn to 3100 on heading 360° and on EWO R-132 to RAGUE/19 DME and hold.

AWOS-3 121.125	INDIANAPOLIS CENTER 121.175 353.65	UNICOM 122.7 (CTAF) 0
--------------------------	--	---------------------------------

DME REQUIRED



	EWO VOR/DME 3100	DUMON EWO 10	3100 hdg 360°	RAGUE EWO 19	MUMOE EWO 23.9
	10 NM		9 NM		4.9 NM
CATEGORY	A	B	C	D	
C CIRCLING	1540-1	619 (700-1)	1540-1 3/4 619 (700-1 3/4)	1660-2 1/4 739 (800-2 1/4)	

SE-1, 23 MAR 2023 to 20 APR 2023

SE-1, 23 MAR 2023 to 20 APR 2023