

CLTCH THREE DEPARTURE (RNAV)

NE-3, 23 MAR 2023 to 20 APR 2023

TOP ALTITUDE:
3000

P-56B



P-56A

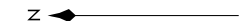
NOTE: Chart not to scale.

DEPARTURE ROUTE DESCRIPTION

Climb on heading assigned by ATC, expect RADAR vectors to BUTRZ, then on track 239° to CLTCH, thence. . . .

. . . . on assigned transition, maintain altitude assigned by ATC, expect clearance to filed altitude within ten (10) minutes after departure.

FLASK TRANSITION (CLTCH3:FLASK)
MAULS TRANSITION (CLTCH3:MAULS)



- AWOS-3
- 125.225
- CLNC DEL
- 120.5
- 118.55 (When twr closed)
- GND CON
- 120.5
- LEESBURG TOWER*
- 127.5 (CTAF)
- UNICOM
- 122.975
- POTOMAC DEP CON
- 125.05 350.2

NOTE: RNAV 1.

NOTE: RADAR required.

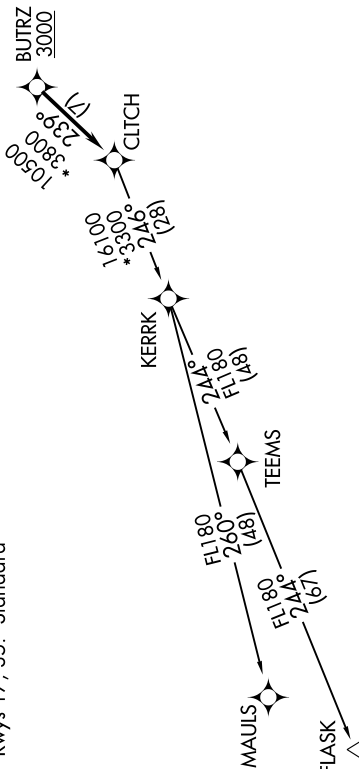
NOTE: DME/DME/IRU or GPS required.

NOTE: Turbo-jets only.

NOTE: Takeoff Rwy 35 requires a climb to 1200 on heading 353° before proceeding on the ATC assigned heading for obstacle avoidance.

TAKEOFF MINIMUMS:

Rwys 17, 35: Standard



CLTCH THREE DEPARTURE (RNAV)

(CLTCH3.CLTCH) 31DEC20

NE-3, 23 MAR 2023 to 20 APR 2023