

EC-1, 23 MAR 2023 to 20 APR 2023

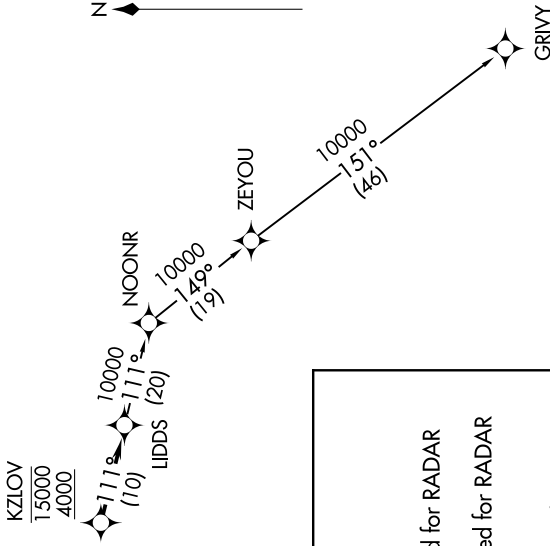
**TOP ALTITUDE:
ASSIGNED BY ATC**



TAKEOFF MINIMUMS:

Rwy 9: Standard.
Rwy 27: Standard with minimum climb of 476' per NM to 1500.

AWOS-3
119.475
CTAF
123.05
DETROIT DEP CON
132.35 284.0



NOTE: RNAV 1.
NOTE: RADAR required.
NOTE: DME/DME/IRU or GPS required.
NOTE: Turbojet departures at/above 10000, maintain 280K until advised by ATC.

DEPARTURE ROUTE DESCRIPTION

TAKEOFF RUNWAY 9: Climb on heading 096° to 1400 then as assigned for RADAR vectors to cross KZIOV between 4000 and 15000, thence....
TAKEOFF RUNWAY 27: Climb on heading 276° to 1500 then as assigned for RADAR vectors to cross KZIOV between 4000 and 15000, thence....
...on track 111° to LIDDS, then on (transition). Maintain ATC assigned altitude, expect filed altitude 10 minutes after departure.

GRIVY TRANSITION (LIDDS2.GRIVY):

NOTE: Chart not to scale.

EC-1, 23 MAR 2023 to 20 APR 2023