


LOC/DME I-MCK 110.95 Chan 46 (Y)	APP CRS 123°	Rwy Idg 5698 TDZE 2583 Apt Elev 2583
---	------------------------	---

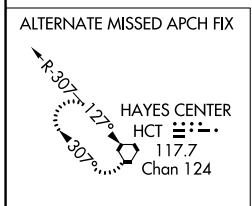
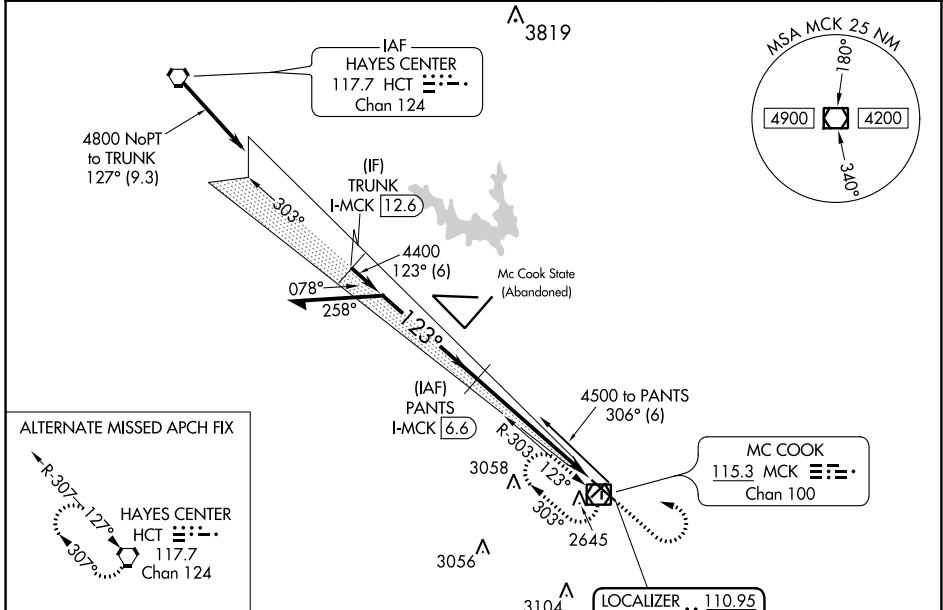
ILS or LOC/DME RWY 12

MC COOK BEN NELSON RGNL (MCK)

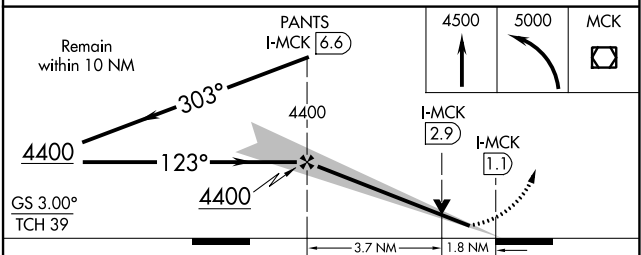
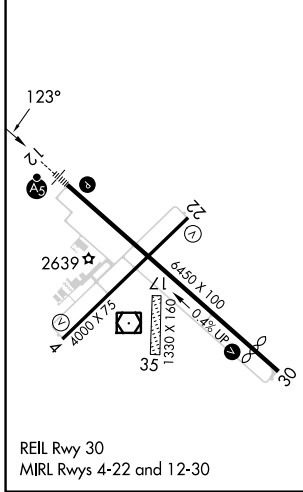
⚠ Circling NA to Rwys 17 and 35. When local altimeter setting not received, use Imperial Muni altimeter setting and increase DA 213 feet and S-ILS 12 all visibilities ½ mile; increase all MDAs 220 feet and S-LOC 12 and Circling visibilities Cats A and B ¼ mile, Cat C 1 mile. VDP NA when using Imperial Muni altimeter setting. For inoperative MALSR, when using Imperial Muni altimeter setting increase S-ILS 12 all visibilities to 1½, and S-LOC 12 Cat A visibility to 1.

MALSR

MISSED APPROACH:
 Climb to 4500 then climbing left turn to 5000 direct MCK VOR/DME and hold.

ASOS 119.025	DENVER CENTER 132.7 226.675	UNICOM 122.8 (CTAF) 
------------------------	---------------------------------------	---



ELEV 2583	D	TDZE 2583
-----------	----------	-----------



CATEGORY	A	B	C	D
S-ILS 12	2783-½ 200 (200-½)			NA
S-LOC 12	3180-½	597 (600-½)	3180-1 597 (600-1)	NA
CIRCLING	3180-1	597 (600-1)	3360-2¼ 777 (800-2¼)	NA

NC-2, 23 MAR 2023 to 20 APR 2023

NC-2, 23 MAR 2023 to 20 APR 2023