

WAAS CH <b>82332</b> <b>W36A</b>	APP CRS <b>001°</b>	Rwy Idg <b>4098</b> TDZE <b>572</b> Apt Elev <b>573</b>
--	------------------------	---

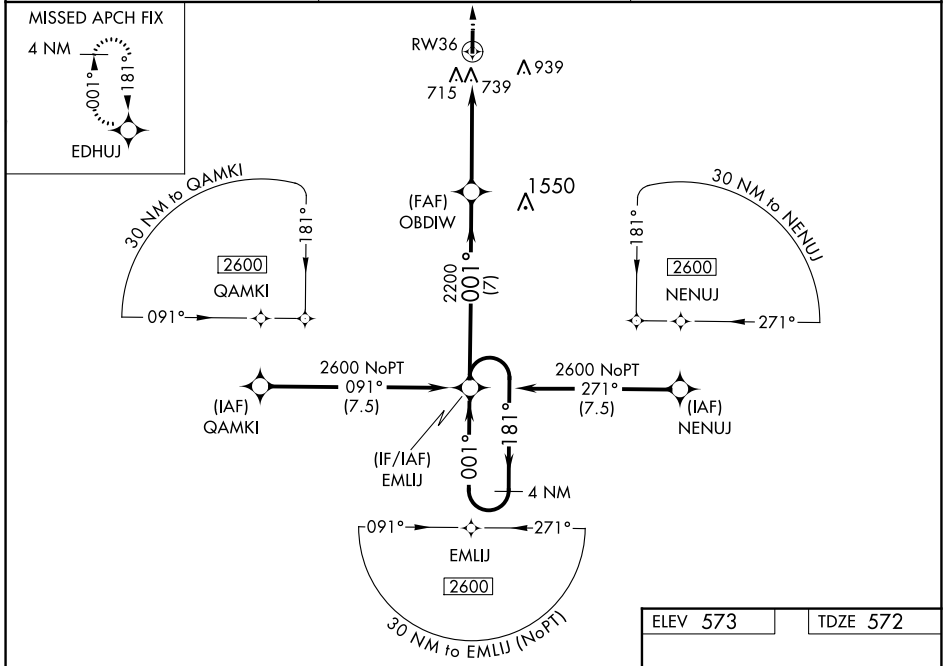
# RNAV (GPS) RWY 36

SALEM-LECKRONE (SLO)

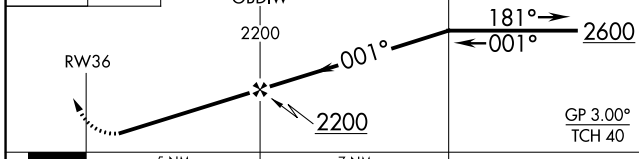
**⚠** Baro-VNAV NA when using Centralia altimeter setting. For uncompensated Baro-VNAV systems, LNAV/VNAV NA below -21°C (-5°F) or above 54°C (130°F). When local altimeter setting not received, use Centralia altimeter setting: increase LPV DA to 1045 feet and visibility 1/8 SM; increase LNAV/VNAV DA to 1093 feet; increase all MDAs 40 feet and Circling Cats C/D visibility 1/4 SM. Procedure NA at night. DME/DME RNP-0.3 NA. Helicopter visibility reduction below 1 SM NA.

**MISSED APPROACH:**  
Climb to 2600 direct EDHUJ and hold.

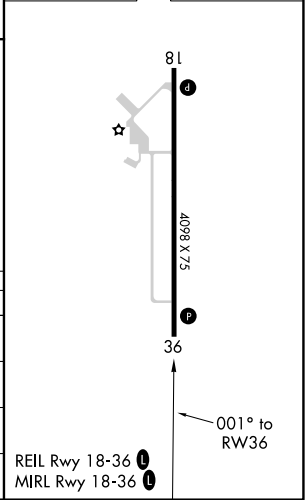
AWOS-3 <b>118.525</b>	KANSAS CITY CENTER <b>127.7 351.825</b>	UNICOM <b>122.725 (CTAF) 0</b>
--------------------------	--	-----------------------------------



**2600** EDHUJ VGSI and RNAV glidepath not coincident (VGSI Angle 3.00/TCH 28). **4 NM** Holding Pattern



ELEV 573	TDZE 572
----------	----------



CATEGORY	A	B	C	D
LPV DA		1017-1½	445 (500-1½)	
LNAV/VNAV DA		1065-1¾	493 (500-1¾)	
LNAV MDA	1040-1	468 (500-1)	1040-1¾	468 (500-1¾)
CIRCLING	1040-1	467 (500-1)	1380-2¼	1380-2½
			807 (900-2¼)	807 (900-2½)

REIL Rwy 18-36 0  
MIRL Rwy 18-36 0

EC-3, 23 MAR 2023 to 20 APR 2023

EC-3, 23 MAR 2023 to 20 APR 2023