

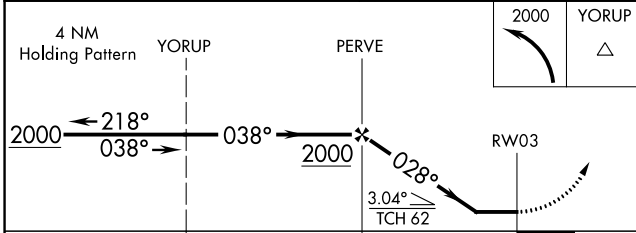
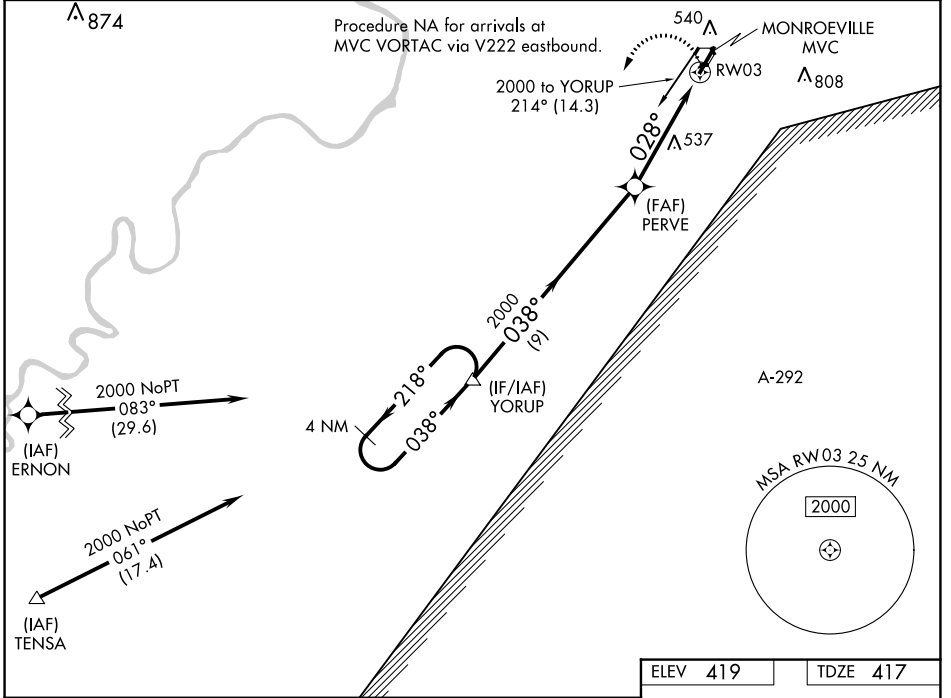
APP CRS	Rwy Idg	6028
028°	TDZE	417
	Apt Elev	419

RNAV (GPS) RWY 3

MONROE COUNTY AEROPLEX (MVC)

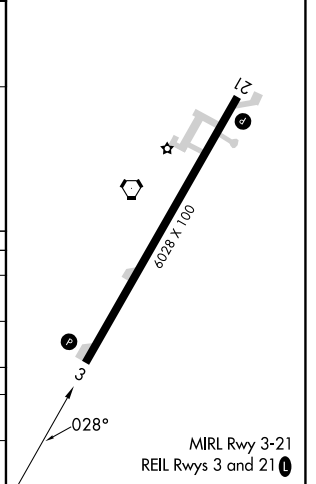
RNP APCH.	Obtain local altimeter setting on CTAF; when not received, use Evergreen Rgnl/Middleton Fld altimeter setting. Procedure NA at night. Rwy 3 helicopter visibility reduction below 1 SM NA.	MISSED APPROACH: Climbing left turn to 2000 direct YORUP and hold.
-----------	--	---

ATLANTA CENTER 118.55 267.9	UNICOM 123.0 (CTAF)
---------------------------------------	-------------------------------



ELEV 419	TDZE 417
----------	----------

CATEGORY	A	B	C	D
LNVA MDA	940-1 523 (600-1)		940-1½ 523 (600-1½)	
C CIRCLING	940-1 521 (600-1)		940-1½ 521 (600-1½)	1120 2¼ 701 (800-2¼)
EVERGREEN RGNL/MIDDLETON FIELD ALTIMETER SETTING MINIMUMS				
LNVA MDA	1000-1 583 (600-1)		1000-1¾ 583 (600-1¾)	
C CIRCLING	1000-1 581 (600-1)		1000-1¾ 581 (600-1¾)	1180-2½ 761 (800-2½)



SE-4, 23 MAR 2023 to 20 APR 2023

SE-4, 23 MAR 2023 to 20 APR 2023