

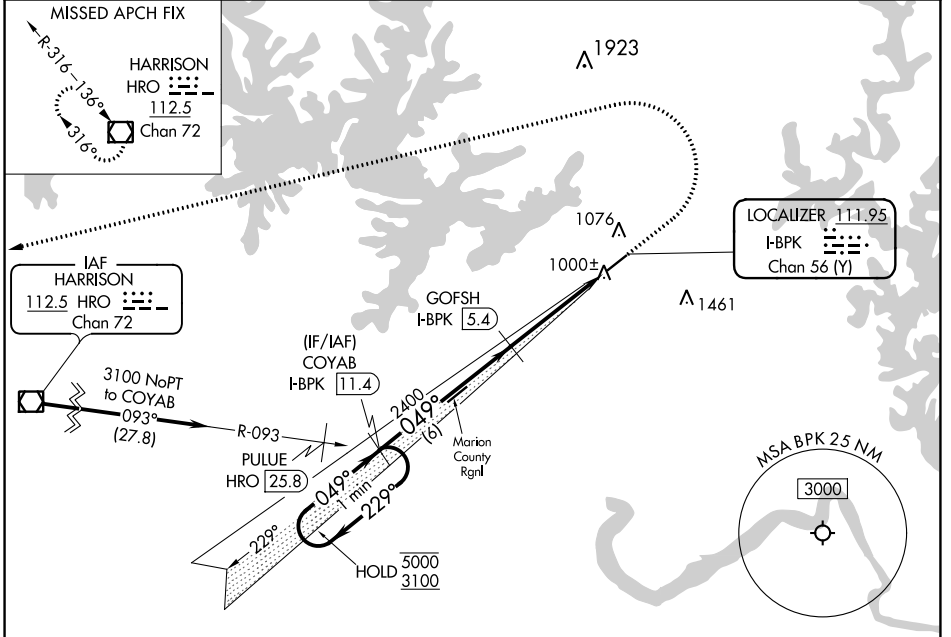
LOC/DME I-BPK <b>111.95</b> Chan 56(Y)	APP CRS <b>049°</b>	Rwy Idg TDZE <b>928</b> Apt Elev <b>928</b>
--	------------------------	---

# ILS or LOC RWY 5

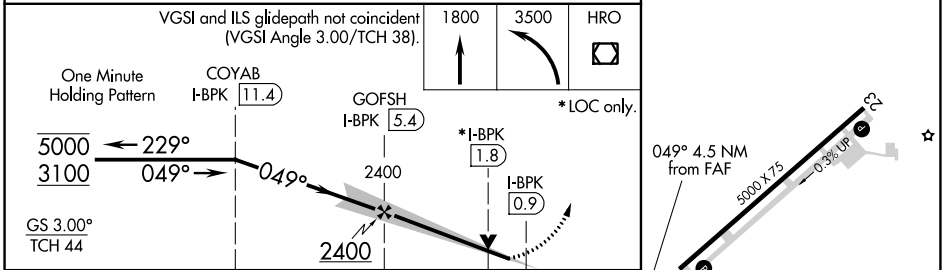
BAXTER COUNTY (BPK)

DME required.	MISSED APPROACH: Climb to 1800 then climbing left turn to 3500 direct HRO VOR/DME and hold.
<p>▼ Circling NA for Cat C, southeast of Rwy 5-23.</p> <p>▲ NA Circling to Rwy 23 NA at night.</p>	

ASOS <b>133.975</b>	MEMPHIS CENTER <b>126.85 281.55</b>	UNICOM <b>123.0</b> (CTAF) <b>0</b>
------------------------	--	--



ELEV 928	TDZE 928
----------	----------



CATEGORY	A	B	C	D
S-ILS 5	1178-¾	250 (300-¾)		NA
S-LOC 5	1260-1	332 (400-1)		NA
CIRCLING	1380-1 452 (500-1)	1400-1 472 (500-1)	1420-1½ 492 (500-1½)	NA

SC-1, 23 MAR 2023 to 20 APR 2023

SC-1, 23 MAR 2023 to 20 APR 2023