

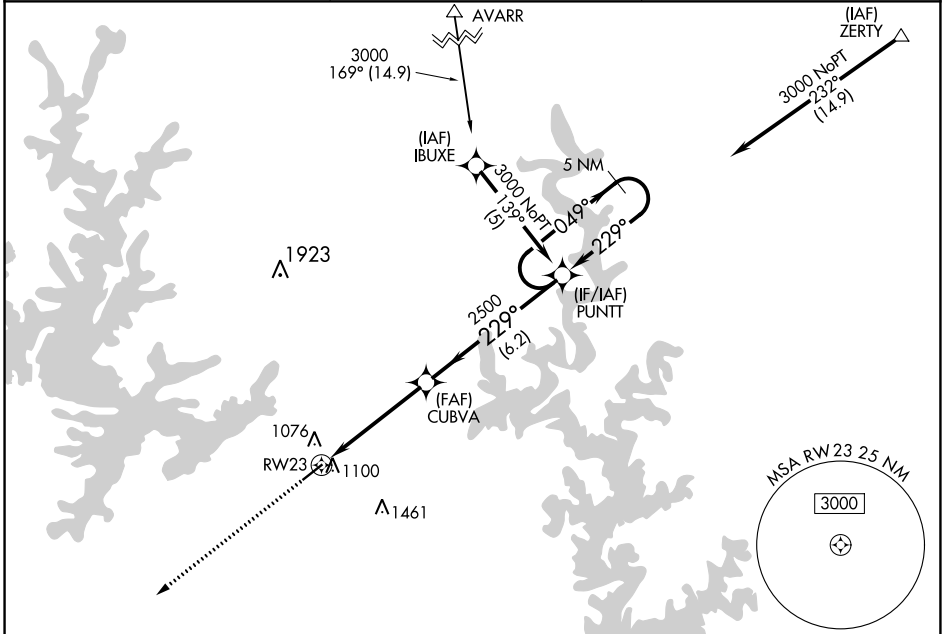
APP CRS	Rwy Idg	5000
229°	TDZE	919
	Apt Elev	928

RNAV (GPS) RWY 23

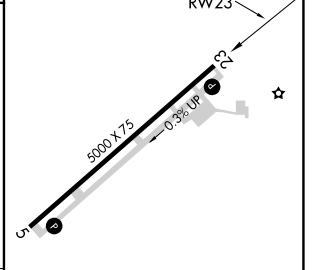
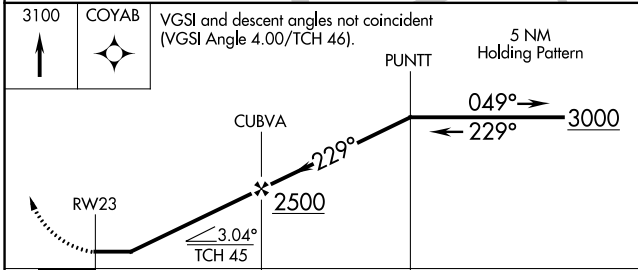
BAXTER COUNTY (BPK)

RNP APCH.
 ⚠ Rwy 23 helicopter visibility reduction below 1 SM NA. When local altimeter setting not received, use Flippin altimeter setting and increase all MDAs 60 feet. Circling NA for Cat C, southeast of Rwy 5-23. Straight-in Rwy 23 NA at night, Circling Rwy 23 NA at night.
 MISSED APPROACH: Climb to 3100 direct COYAB and hold.

ASOS 133.975	MEMPHIS CENTER 126.85 281.55	UNICOM 123.0 (CTAF) 0
------------------------	--	---------------------------------



ELEV 928	TDZE 919
----------	----------



CATEGORY	A	B	C	D
LNNAV MDA	1360-1	441 (500-1)	1360-1 3/8 441 (500-1 3/8)	NA
CIRCLING	1400-1	472 (500-1)	1420-1 1/2 492 (500-1 1/2)	NA

REIL Rwy 5 and 23 0
 MRL Rwy 5-23 0

SC-1, 23 MAR 2023 to 20 APR 2023

SC-1, 23 MAR 2023 to 20 APR 2023